









ПРАТ «ДТЕК КИЇВСЬКІ
ЕЛЕКТРОМЕРЕЖІ»
РП 562
РЧ-10кВ
ТЕЛ 15-88



КАБ. ПОВЕРХ



ПРАТ «ДТЕК КИЇВСЬКІ
ЕЛЕКТРОМЕРЕЖІ»
РП 562
РЧ-10кВ
ТЕЛ 15-88



0,4кВ

0,4кВ

1Т
1000кВА
37100

2Т
1000кВА
37100

























ПОЖЕЖА







ИСТОРИЯ ЭКСПЛУАТАЦИИ ПОЖАРНОГО ПИЩЕКОМБЛЕТА
Техническая информация: Ø 19 мм Ø 20 мм

1. Проверить наличие запорной арматуры.
2. Проверить наличие воды до места подачи воды.
3. Проверить состояние шланга.
4. Проверить наличие струны в стволе на воду.
5. После завершения подачи воды закрыть арматуру.
6. Проверить состояние рукава на наличие повреждений.

ПИЩЕКОМБЛЕТ ПОЖАРНЫЙ ИИ 25-02
ИИ 25-02
ИИ 25-02

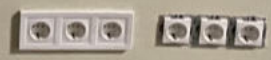
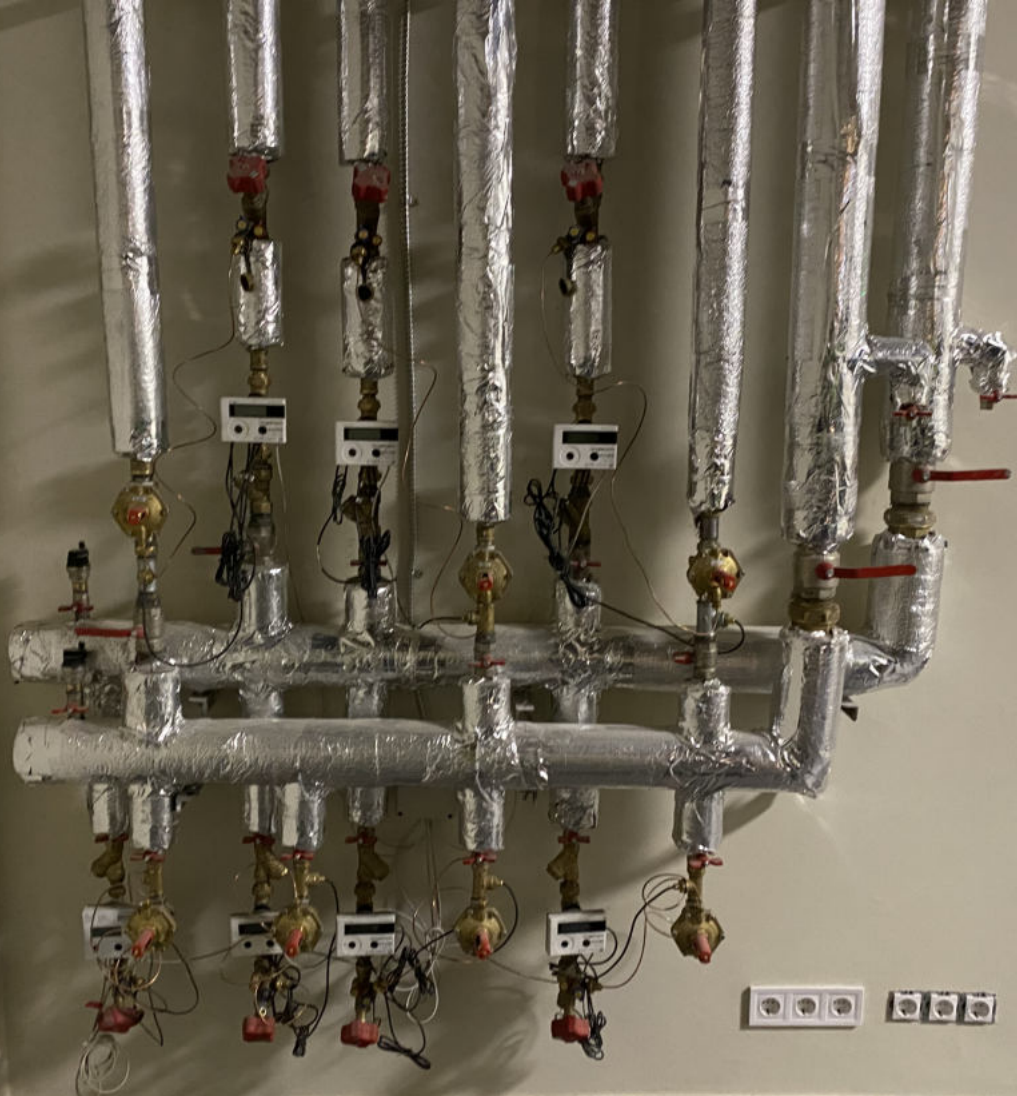


ПОВЕРХ 1-2

▶ 0000 0000









ПОБЕПХ 1-2











Small white label on the glass door with illegible text.















































T3
SUPRA RIGID
Nr. 224

B1
HOZE RIGID
Nr. 222

T3
SUPRA RIGID
Nr. 222

B1
HOZE RIGID
Nr. 222

T3
SUPRA RIGID
Nr. 222

B1
HOZE RIGID
Nr. 222

T3
SUPRA RIGID
Nr. 221

B1
HOZE RIGID
Nr. 221

T3
FIBRA RIGID
Nr. 220

B1
HOZE RIGID
Nr. 220

B1
HOZE RIGID
Nr. 220

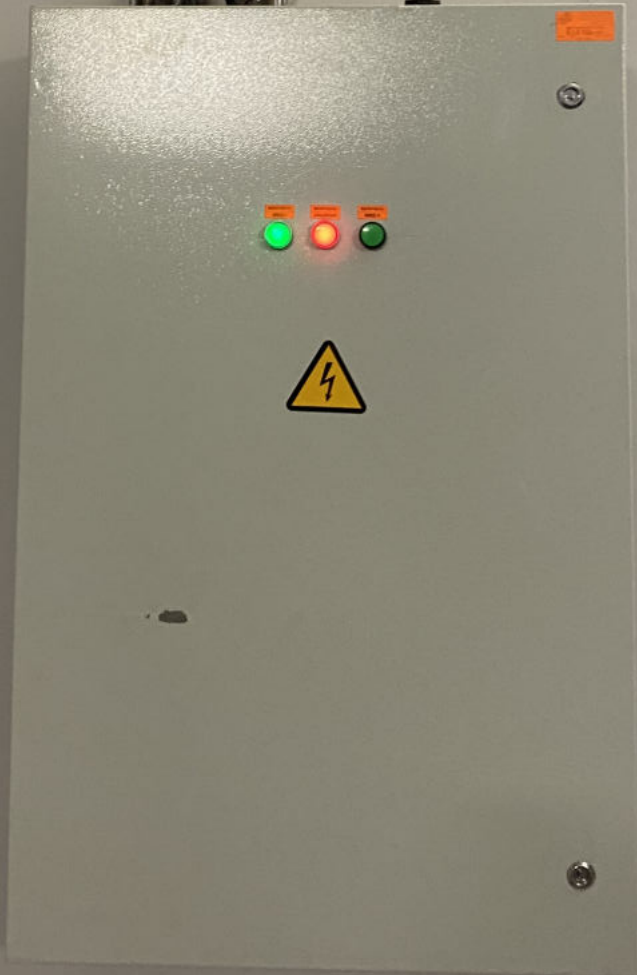


















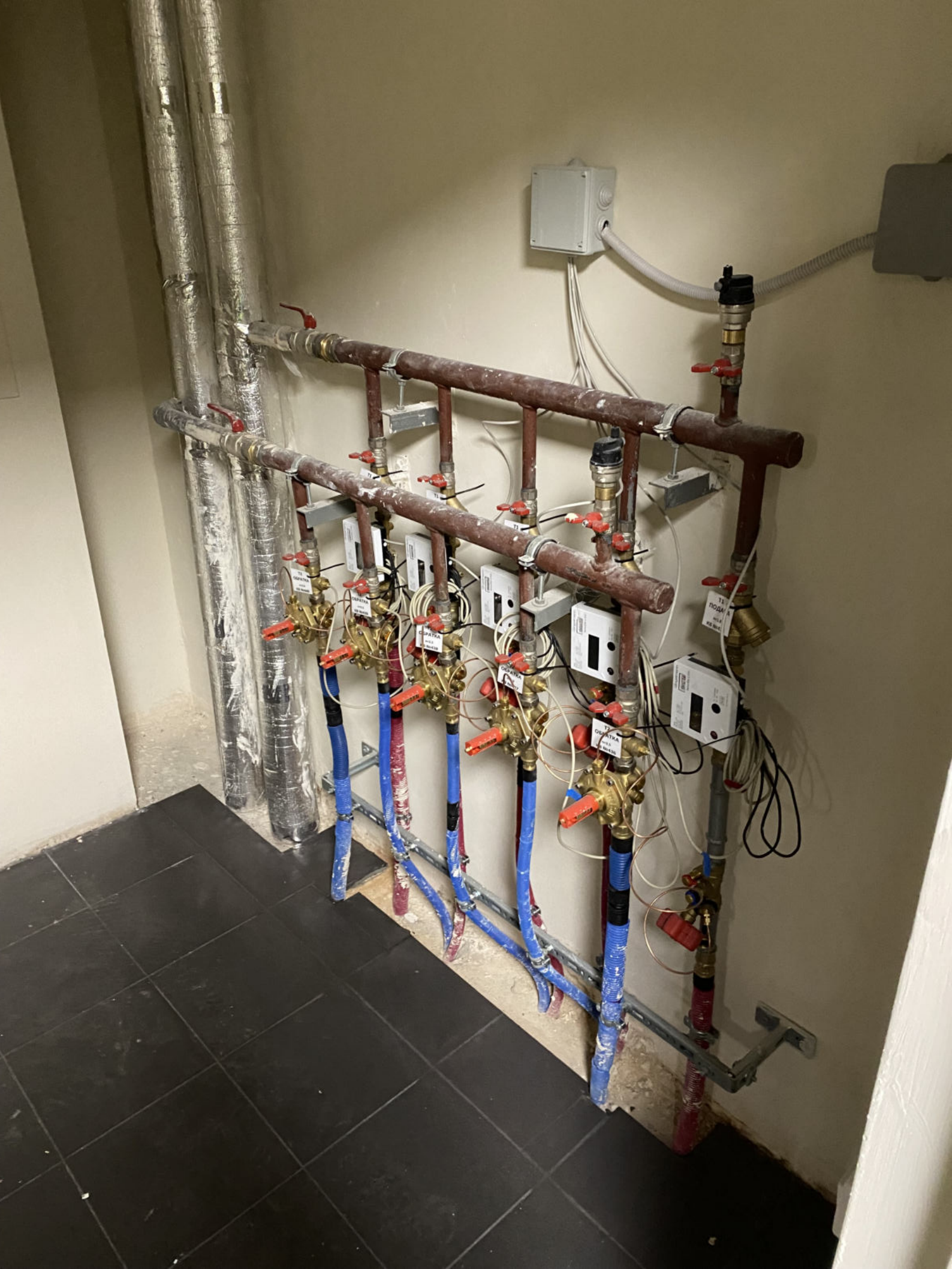


Handwritten text on a small white label, likely providing instructions or maintenance information for the fire equipment.















T3
ГАРМЧА ВОДА
КВ. 430

B1
ХОЛ ВОДА
КВ. 429

T3
ГАРМЧА ВОДА
КВ. 429

B1
ХОЛ ВОДА
КВ. 428

T3
ГАРМЧА ВОДА
КВ. 428

B1
ХОЛ ВОДА
КВ. 442

T3
ГАРМЧА ВОДА
КВ. 442

B1
ХОЛ ВОДА
КВ. 441

T3
ГАРМЧА ВОДА
КВ. 441

















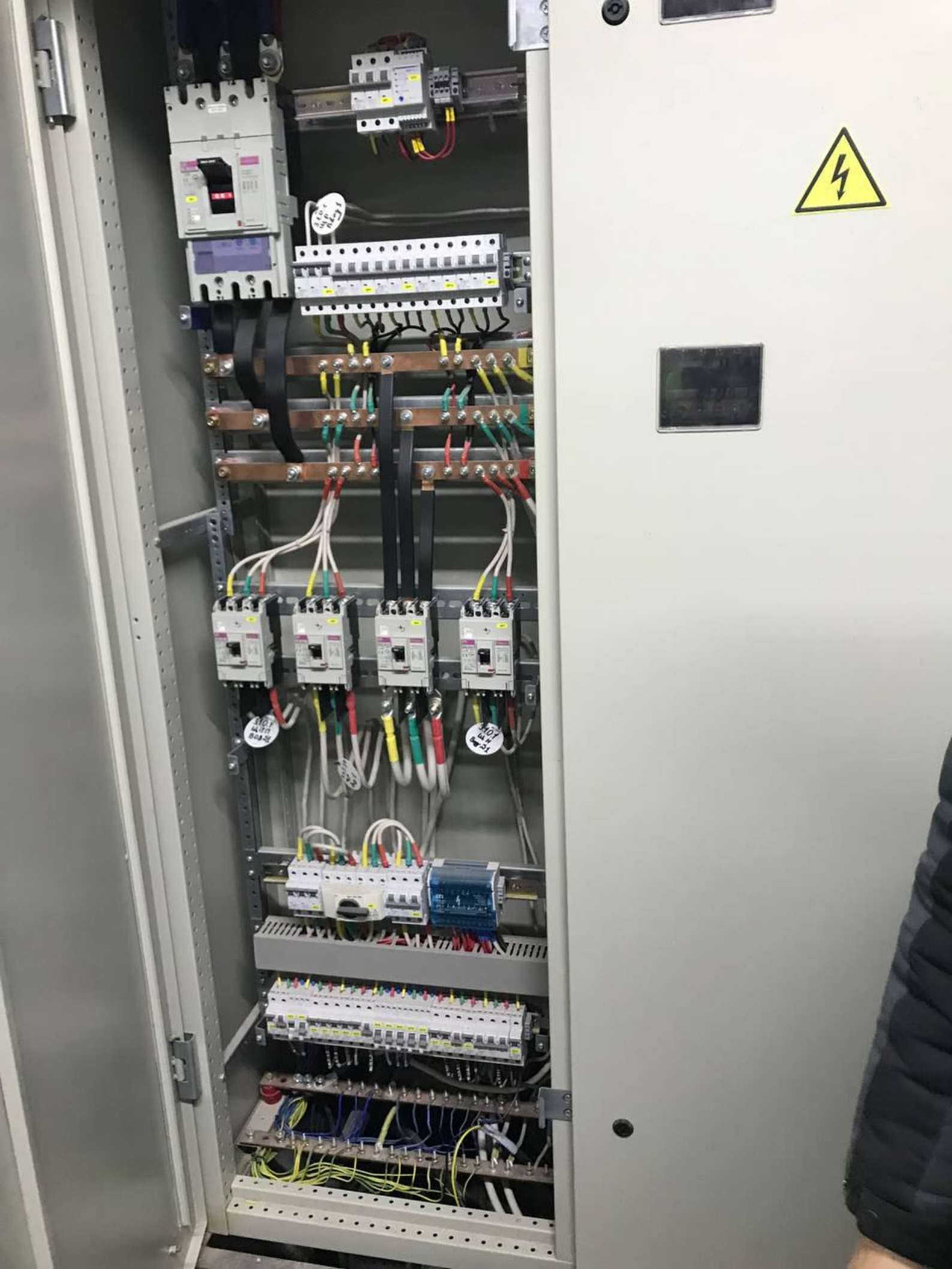
25/3









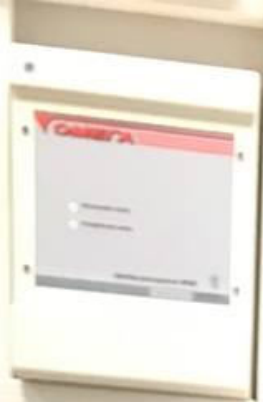
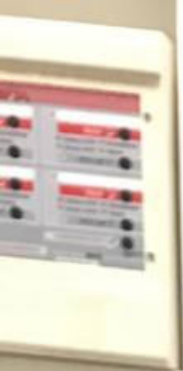




ETI
10
10
10
10
M < > <

STOP
STOP
STOP











Grey electrical control box

KB №431

KB №432

KB №433

KB №434

T2
OБPATKA
№4.1
KB №431

T2
OБPATKA
№4.2
KB №432

T2
OБPATKA
№4.3
KB №433

T2
OБPATKA
№4.4
KB №434

T2
OБPATKA
№4.5
KB №435





Handwritten labels on a blue tag hanging from the ceiling.

Handwritten labels on a blue tag hanging from the ceiling.

White electrical control panel mounted on the wall.

White electrical control panel mounted on the wall.

Tall metal cabinet with a control panel and indicator lights.

Large piece of equipment with a fan and various cables.

Smaller control unit or component on a stand.























MADE BY
Starwood-NN
W. STARWOODNN









VELLEZ



A rack of ten General Instruments (GI) electrical control panels mounted on a wall. The panels are arranged in two rows of five. The top row contains five panels with blank displays. The bottom row contains five panels with active displays showing various electrical parameters and status indicators. To the left of the rack is a small white electrical box with a warning symbol.

















SPRINKLER
ALARM
WEFLO
FIRE PROTECTING EQUIPMENT
WHEN BELL RINGS
CALL FIRE DEPT.

WEFLO
REAR VIEW
157100

WEFLO

WEFLO

20000
00016
00040
20000
00016
00040
20000
00016
00040

























58-761

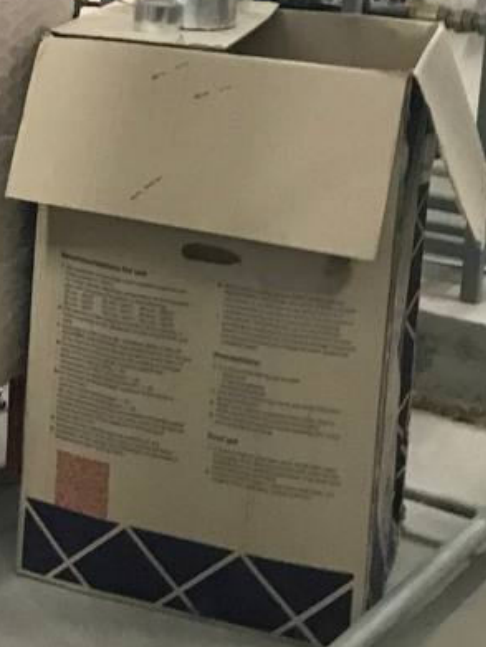








24163











KJS440

www.kj.com.tr

SERVERS





POWER
GENERATOR

KJS440

www.kjpower.com





Control cabinet with a digital display showing 'COR' and the Wilo logo. It features a red emergency stop button, three green selector switches, and a power switch. The Wilo logo is also visible on the bottom left of the cabinet.

Three vertical pumps with green motor housings and stainless steel shafts, mounted on a metal frame. A green expansion tank is located at the base of the pumps.

A worker wearing a white hard hat and a blue face mask, standing in the background of the industrial setting.

A large green tank with a white top, featuring a pressure gauge and a blue handwheel valve. A label with the text 'Wilo-U' is visible on the side.

Various pipes and valves, including a blue handwheel valve and a pressure gauge, connected to the pump system.



















Control Panel

Panel features:

- Three indicator lights (white, red, white) at the top.
- A digital display screen.
- A row of seven buttons below the display.
- A yellow triangular warning symbol on the right side.
- Two rotary switches below the button row.



Green Pipe and Machinery

A large, curved green pipe is connected to a piece of machinery. The machinery has a cylindrical body and various ports. A blue tarp is partially covering the equipment on the right side.

M
MANHATTAN
CITY

















ELETON

The interior of the cabinet is organized into several horizontal sections. At the top, there are two white terminal blocks. Below them, two digital meters are mounted. The middle section features a large black terminal block with several white screw terminals. Below this, a row of four relays is installed on a rail. The bottom section contains a metal busbar with several yellow and red wires connected to it. The cabinet is filled with a complex network of wires and components.

Two black electronic modules are mounted on the inside of the cabinet door. They are connected to a bundle of white cables that enter the cabinet from the top right. The modules have various ports and labels, including a CE mark.

A white technical document, likely a wiring diagram or specification sheet, is taped to the inside of the cabinet door. It contains various tables, diagrams, and text, providing technical details for the equipment inside the cabinet.