





34009937227 / 2019

0 0 0 0 5 9 1 4 . 1 m³

DELTA 6200 Qmax: 400 m³/h DN80

W: 2.411 dm³ CE M19 0103 0123 0026
M1: 02 401.0 1000-10°C-10°C
Hersteller: Z. D-70100 Karlsruhe, BR 12400 2010

Itron







ВІДКРИТА
ВІДКРИТА

ПОРОШОК
НЕ ВХОДИТИ!



РУ-10 кВ





Кабина №4

Кабина №3

Кабина №2

Кабина №1

ШИТ
Шафа ГРУ23 (Волг Ніс)

Світлодіод

ШИТ

Світлодіод



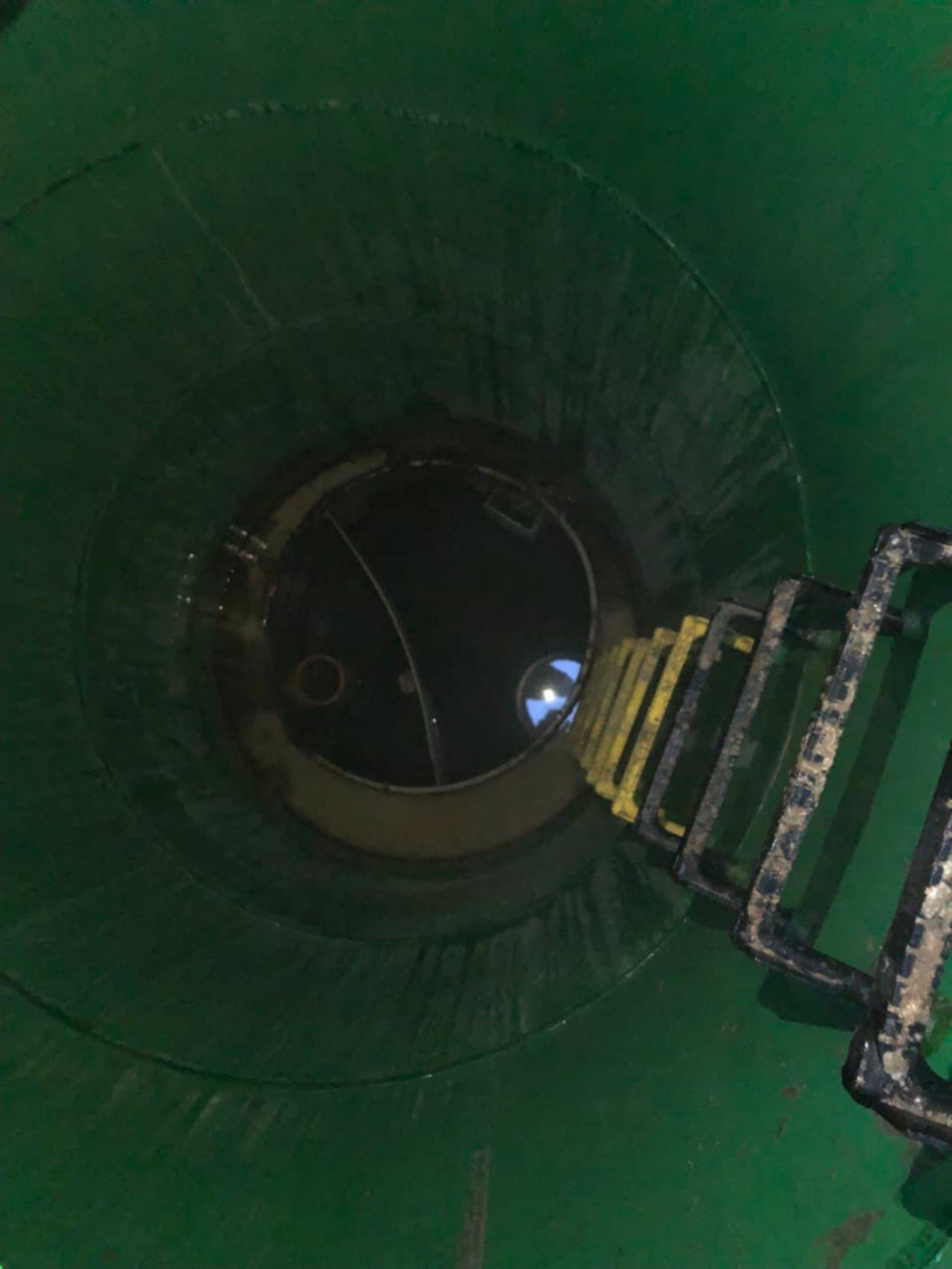






















КІНЕЦЬ ПОРУЧНЯ



GROSS

M19

WPVD-UA
Q_n 400 m³/h
H R1250
MAP 16
T50

00000002 m³

x10



21901023075

GROSS

000002 m³

M19

MTK-UA
Q, 25 m³/h
H R80
MAP 16
T50



X0.01























SIGNATURE













ПОЧАТОК ПІДЬОМУ



1 ПОВЕРХ







WCH2.2 (WCH2.2)
WCH2.2 (WCH2.2)
WCH2.2 (WCH2.2)
WCH2.2 (WCH2.2)
WCH2.2 (WCH2.2)









Terminal blocks with yellow labels, including labels for 'C/N' and various numerical identifiers.

Row of white terminal blocks with black labels, some with handwritten text like 'K1', 'K2', 'K3', 'K4', 'K5', 'K6', 'K7', 'K8', 'K9', 'K10', 'K11', 'K12', 'K13', 'K14', 'K15', 'K16', 'K17', 'K18', 'K19', 'K20', 'K21', 'K22', 'K23', 'K24', 'K25', 'K26', 'K27', 'K28', 'K29', 'K30', 'K31', 'K32', 'K33', 'K34', 'K35', 'K36', 'K37', 'K38', 'K39', 'K40', 'K41', 'K42', 'K43', 'K44', 'K45', 'K46', 'K47', 'K48', 'K49', 'K50', 'K51', 'K52', 'K53', 'K54', 'K55', 'K56', 'K57', 'K58', 'K59', 'K60', 'K61', 'K62', 'K63', 'K64', 'K65', 'K66', 'K67', 'K68', 'K69', 'K70', 'K71', 'K72', 'K73', 'K74', 'K75', 'K76', 'K77', 'K78', 'K79', 'K80', 'K81', 'K82', 'K83', 'K84', 'K85', 'K86', 'K87', 'K88', 'K89', 'K90', 'K91', 'K92', 'K93', 'K94', 'K95', 'K96', 'K97', 'K98', 'K99', 'K100'.

Yellow labels for relays: 'Ein-Gruppe', 'Ein-Netz PT', 'Ein-Netz PT', 'Ein-Netz PT'.

Relays and digital displays showing '232' and '234'.

Power supply units (PSUs) and other electrical components.

Sdrikkid



ПОЧАТОК ПІДНОМУ
1 ПОВЕРХ





Three terminal blocks are mounted at the top of the cabinet. Each block has a yellow label above it with the text "Klemme" and "Klemme".

Two meters are mounted in the upper section of the cabinet. Each meter has a digital display, a green button, and a terminal block with colored wires (yellow, green, red, blue) connected to it.

A single meter is mounted in the lower section of the cabinet. It has a digital display, a green button, and a terminal block with colored wires connected to it.



Technical sheet or wiring diagram is attached to the right door of the cabinet. It contains various symbols and text, but the details are not clearly legible.

UN3-75
3m
(0.55)
14.09.2020







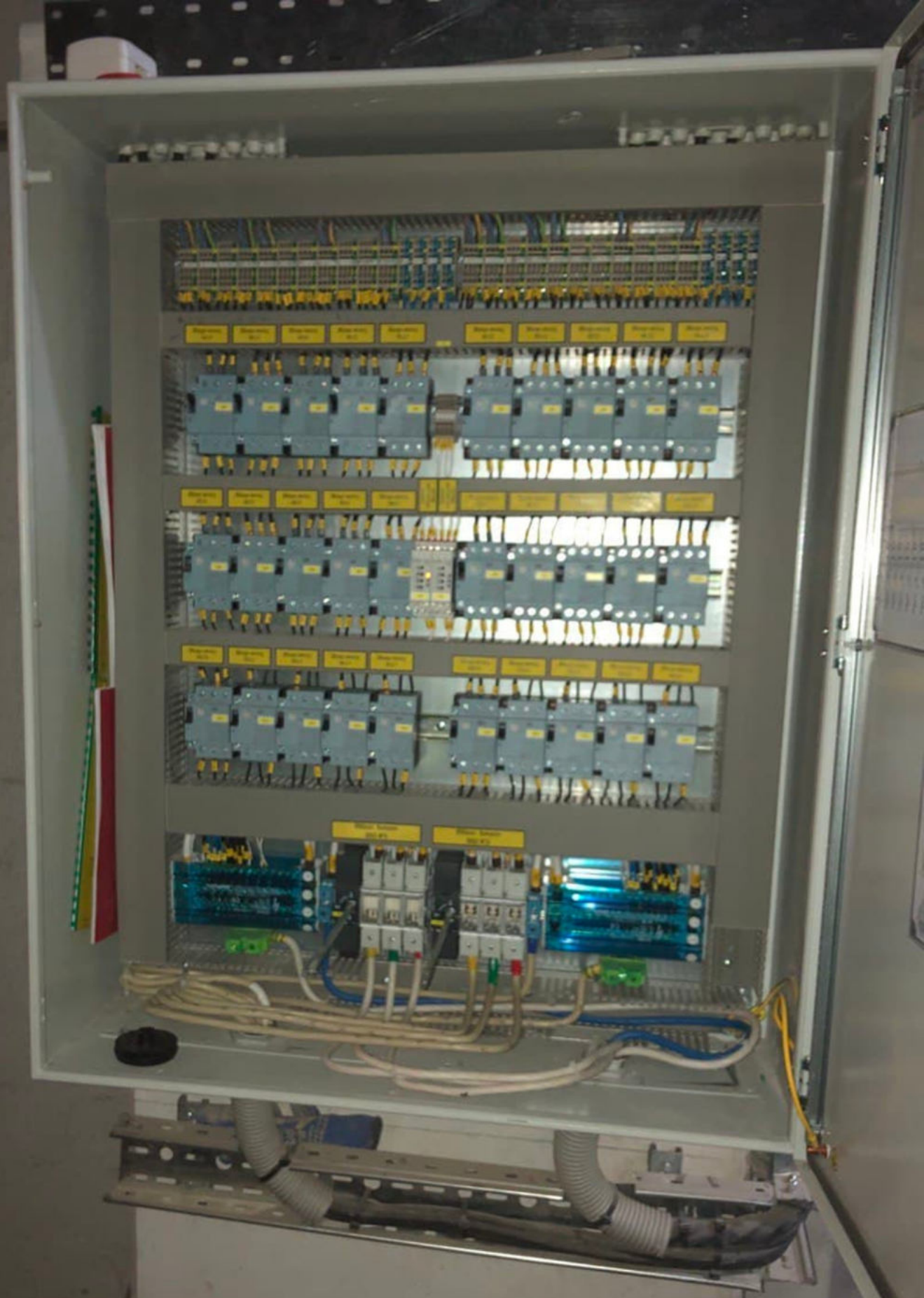




K185

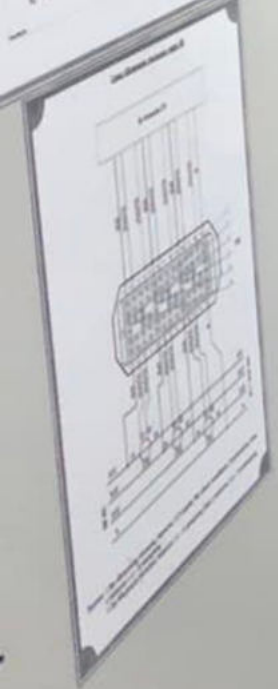












Upper section of the electrical cabinet containing busbars, a central white panel, and terminal blocks.

- Top: Copper busbars with silver-colored terminal bolts.
- Center: A white rectangular panel with a clear plastic cover and some wiring.
- Right: Two terminal blocks with yellow labels, one labeled "Терминал-розетка 500V №1" and the other "Терминал-розетка 500V №2".



Lower section of the cabinet featuring a large circuit breaker with a blue handle and associated busbars.

- Center: A large circuit breaker with a blue handle. A yellow label above it reads "Ввідний вимикач на об'єкту №2".
- Surrounding: Copper busbars and terminal blocks connected to the breaker.

Bottom section of the cabinet containing a terminal block and a power supply unit.

- Top: A terminal block with yellow labels.
- Bottom: A power supply unit with a green LED indicator light.



