





1
193-200

























A tall, light-colored metal cabinet with a vertical handle and a small lock. The cabinet has four small circular holes near the top edge. On the left side of the cabinet, there are four vertical oval-shaped markings.

A red spirit level leaning against the wall. It has a long vertical bar with a horizontal crossbar at the top and a hook at the bottom.

A cardboard box with the text "asc fixing" and "Clamp and Fixing Systems" printed on it. The box is partially open and surrounded by other cardboard debris.

A clear plastic water bottle with a red cap, sitting on the floor among other items.



























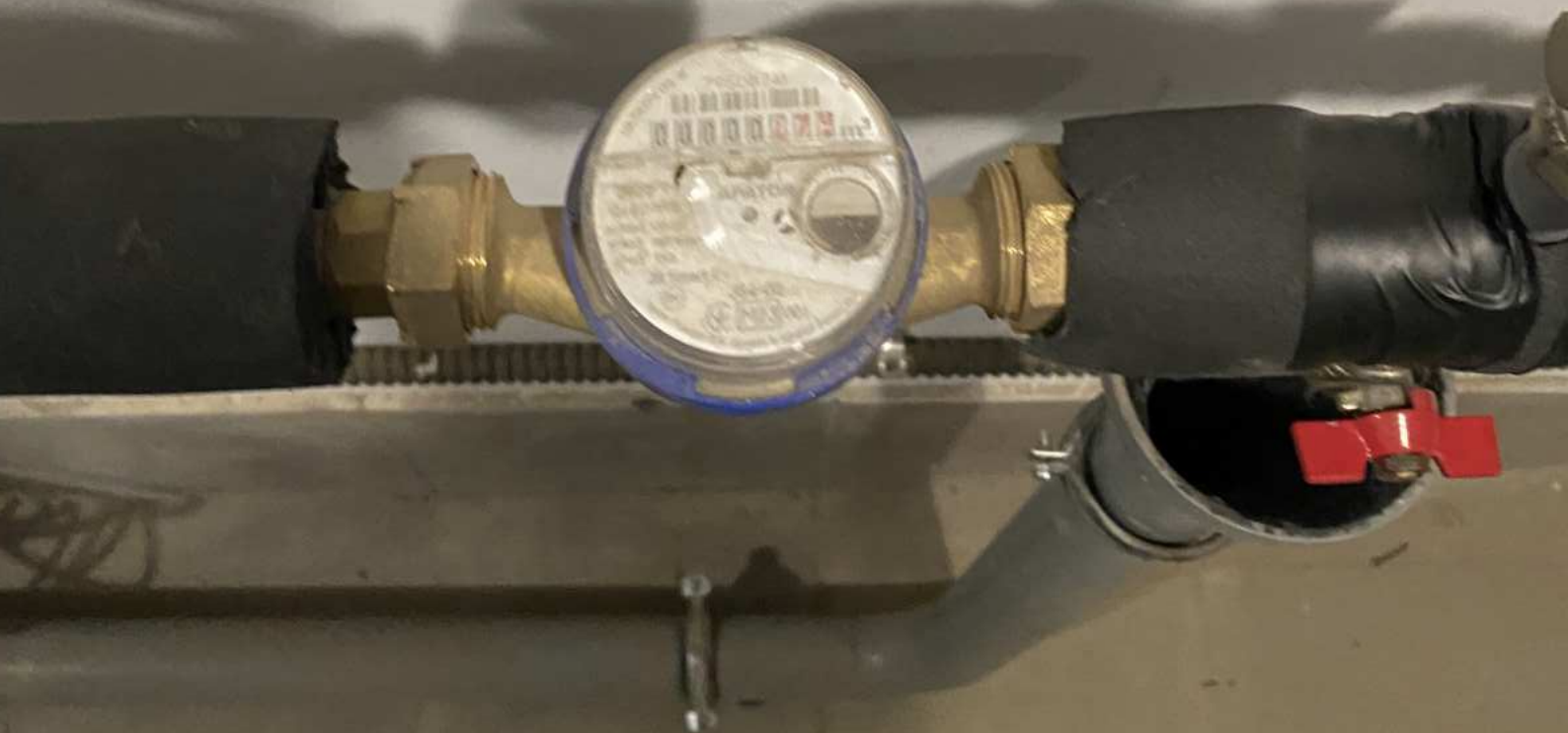


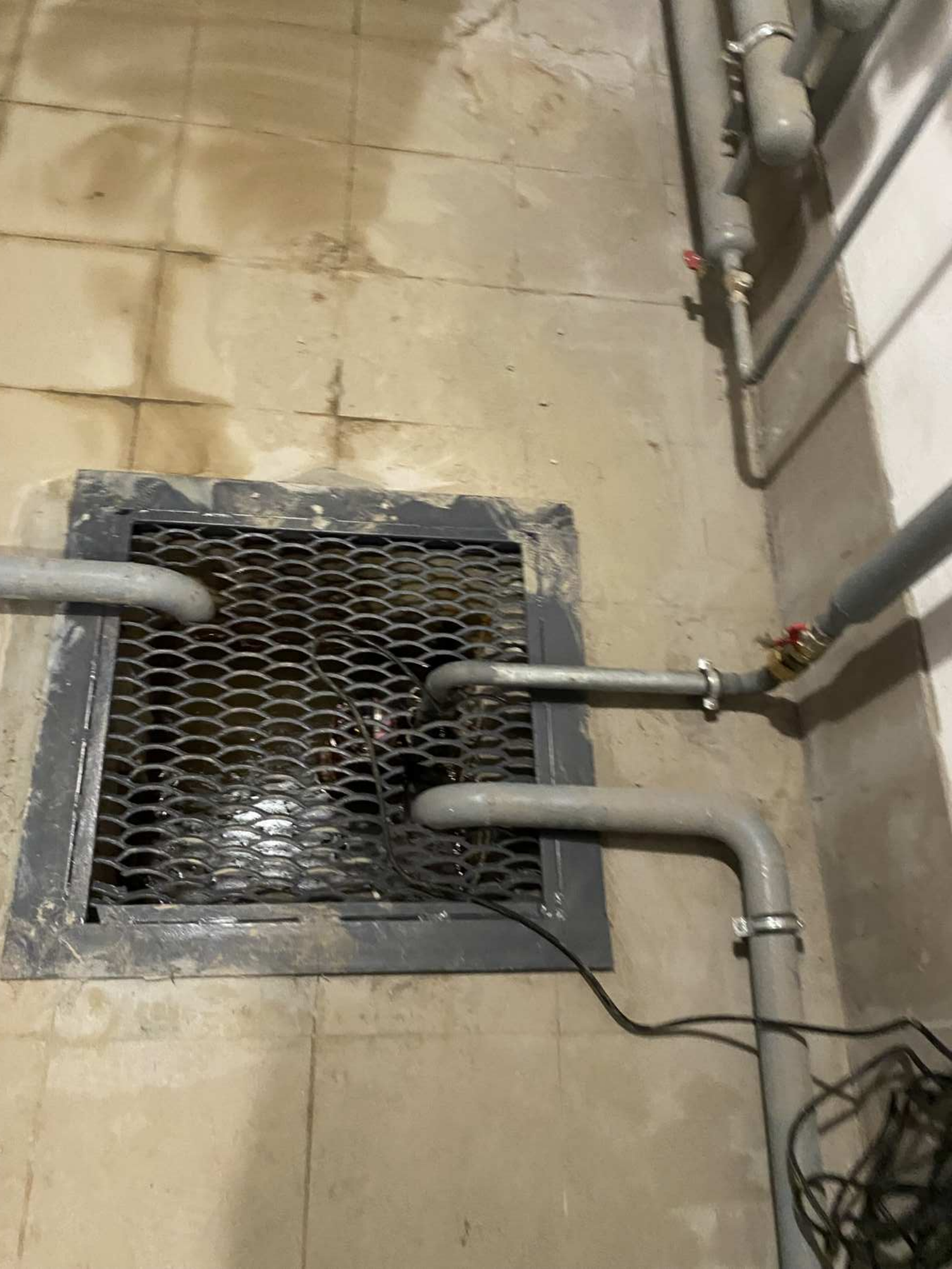




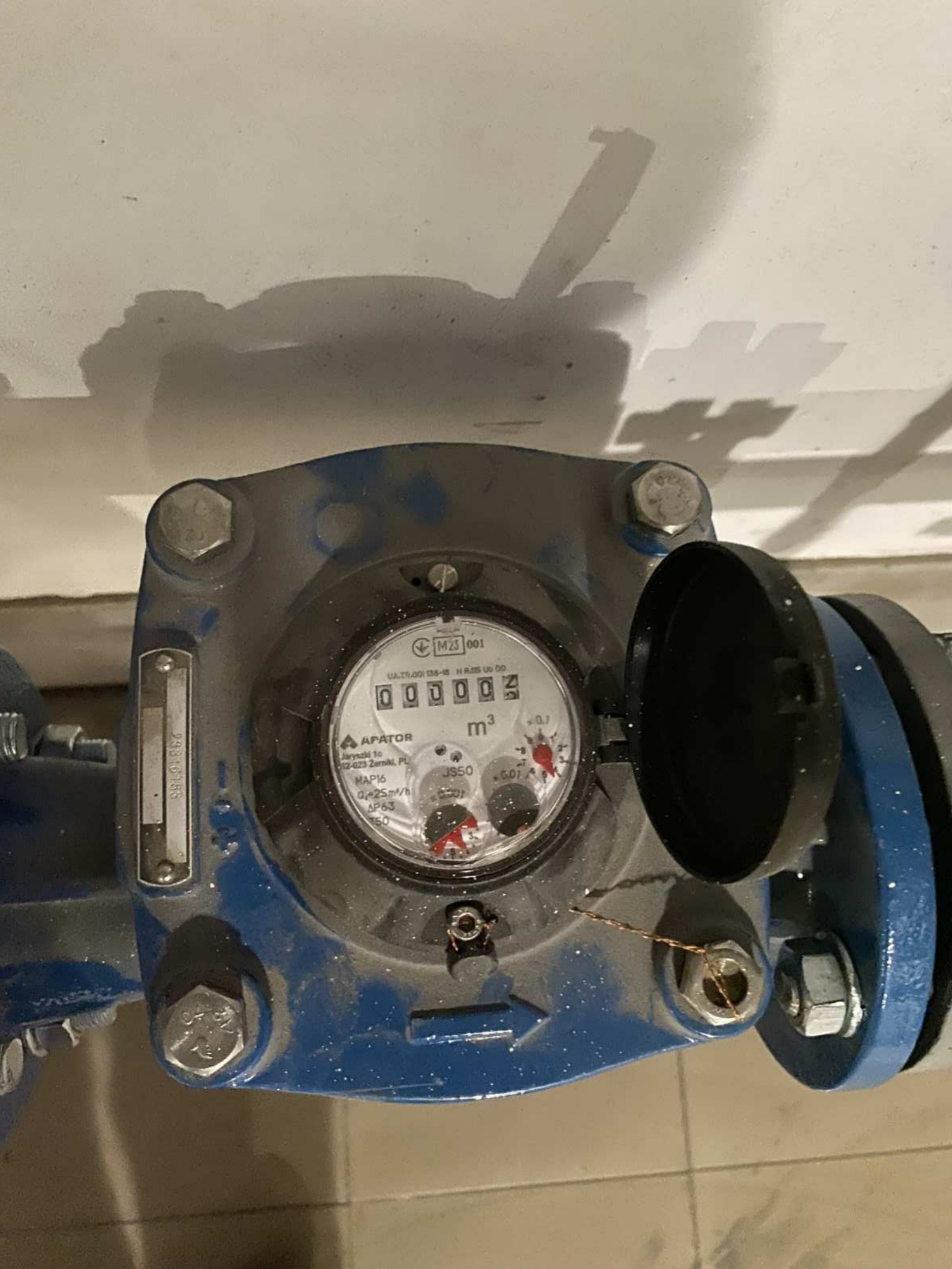












M23 001

UA-TR.001 138-15 H.R.55 Uo 00

000002

m³

APATOR

Jaryszki 1c

012-023 Zernak, PL

MAPI6

Qn=25 m³/h

AP63

150

JS50

0.50

0.20

× 0.1

× 5.0

9330188







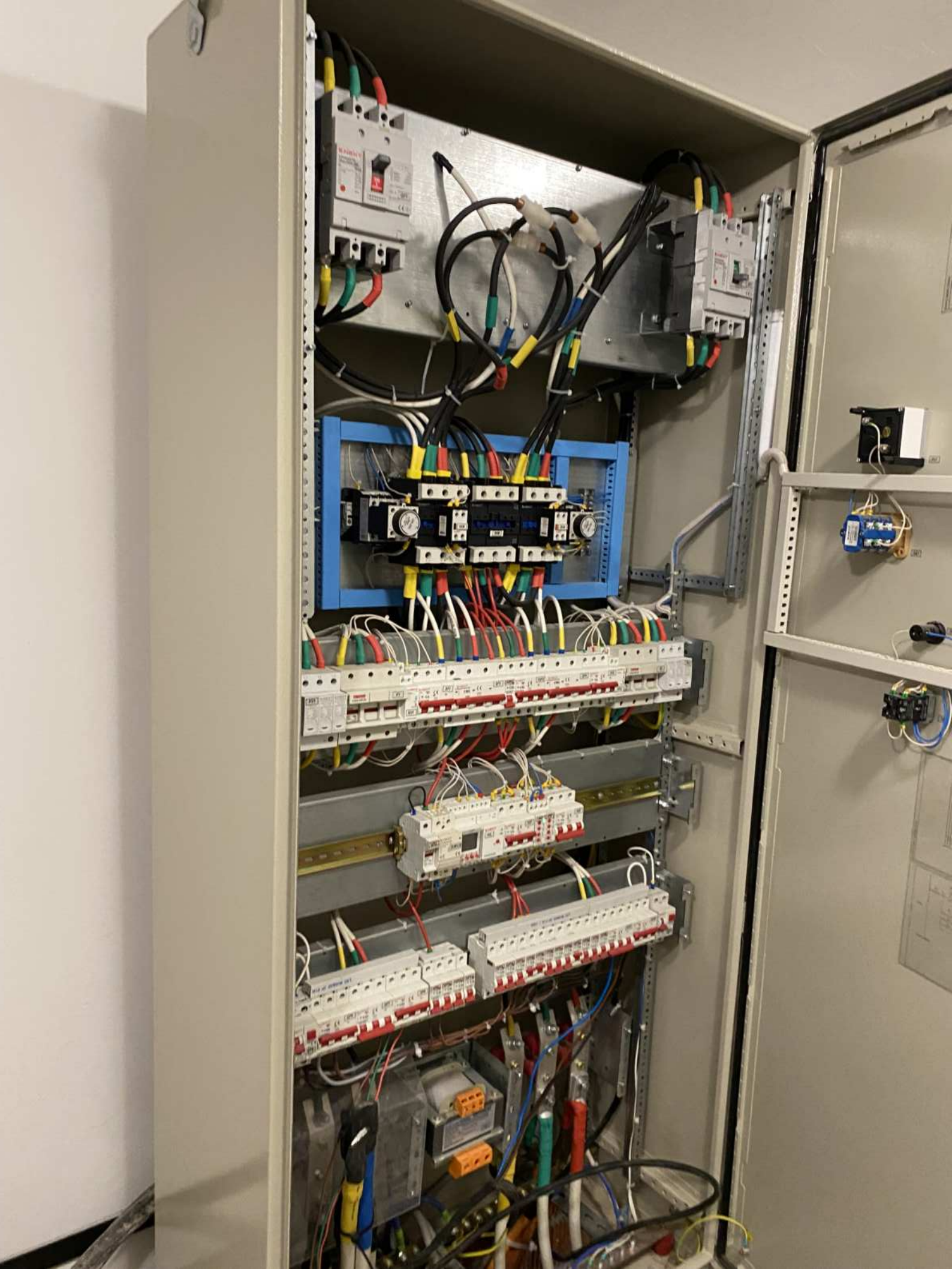


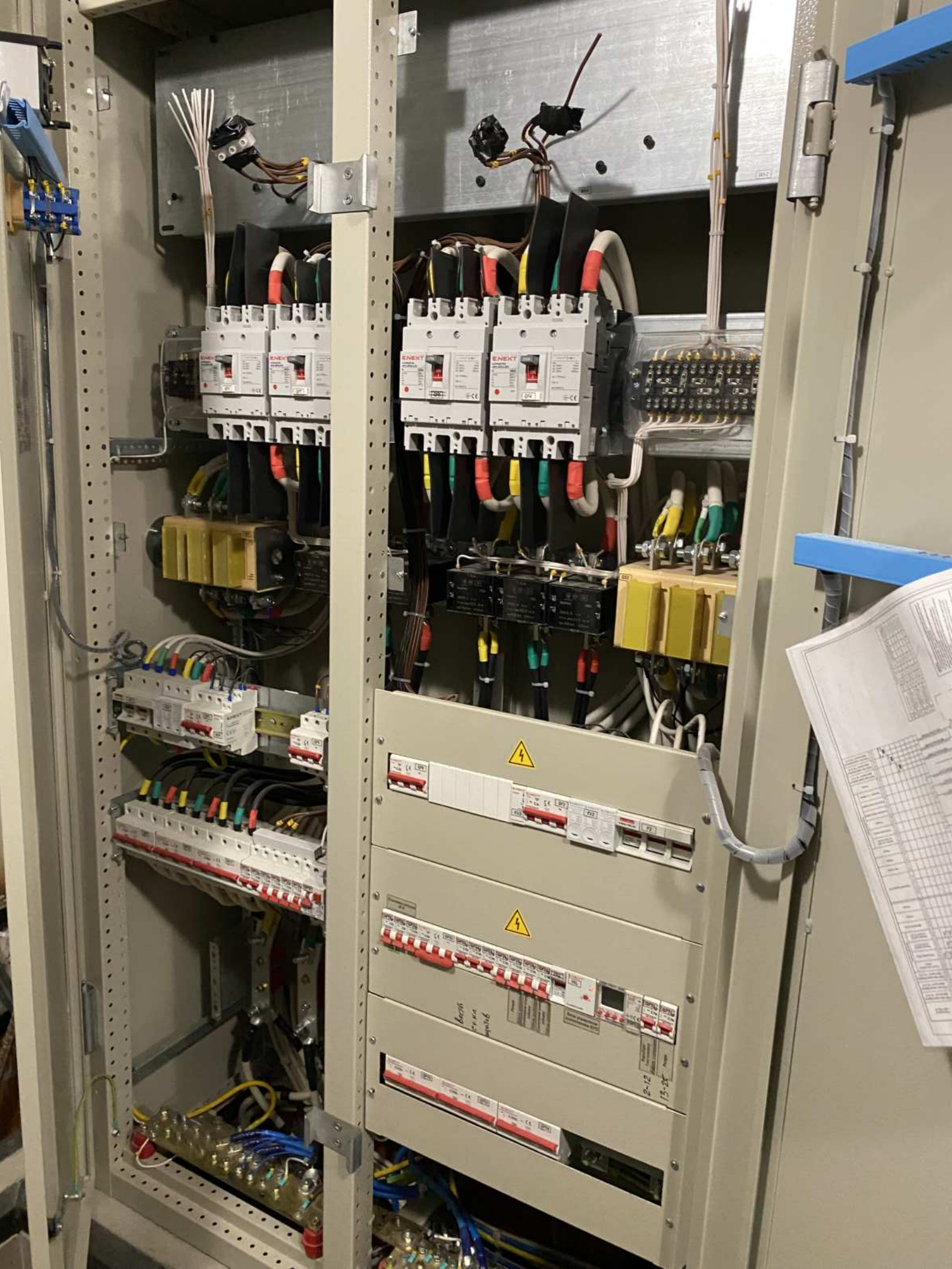












ENEXT
Circuit breakers and relays in the upper left section of the cabinet.

ENEXT
Circuit breakers and relays in the upper middle section of the cabinet.

Terminal block with multiple connections in the upper right section.

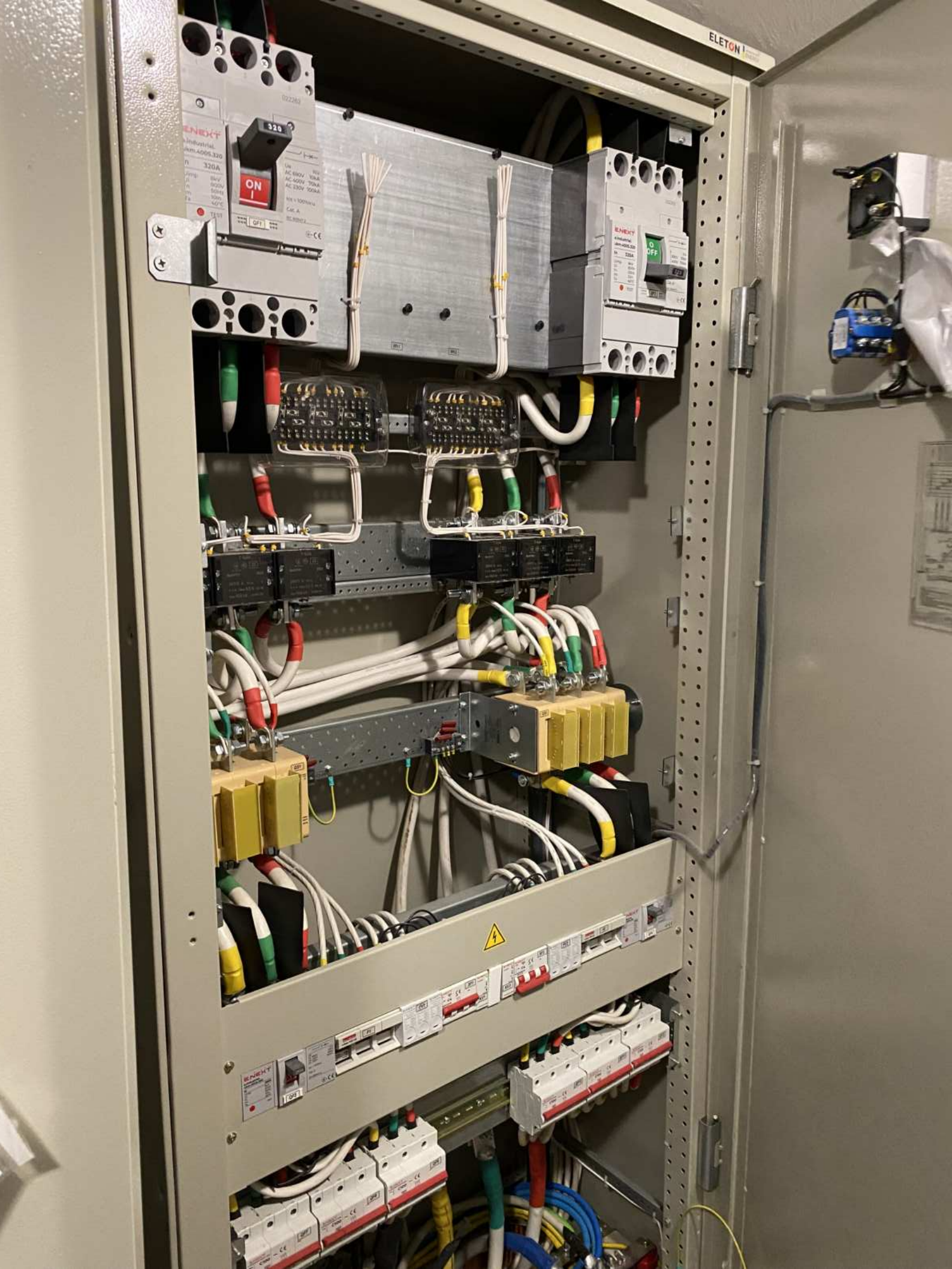
Yellow terminal block in the middle left section.

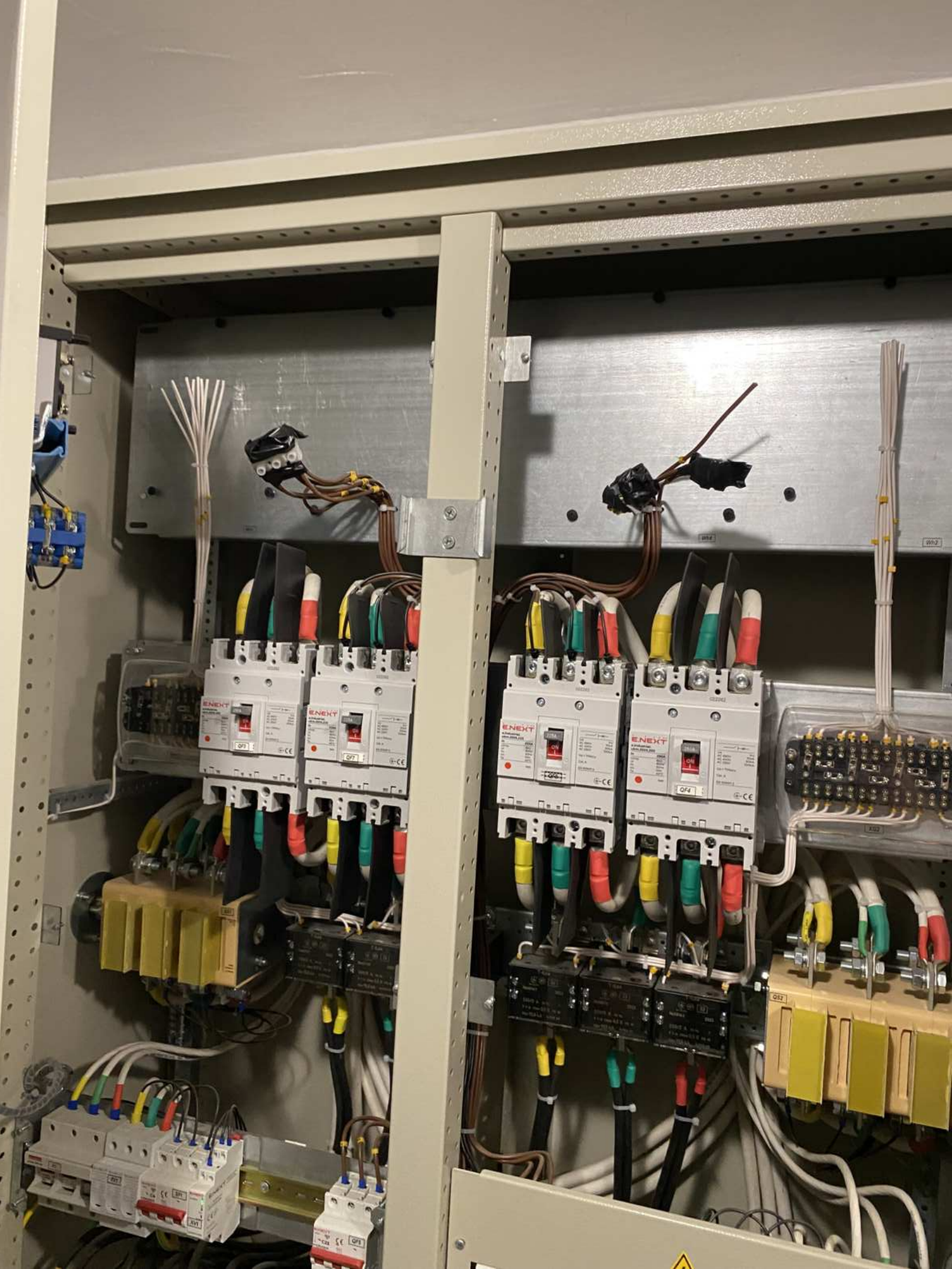
Yellow terminal block in the middle right section.

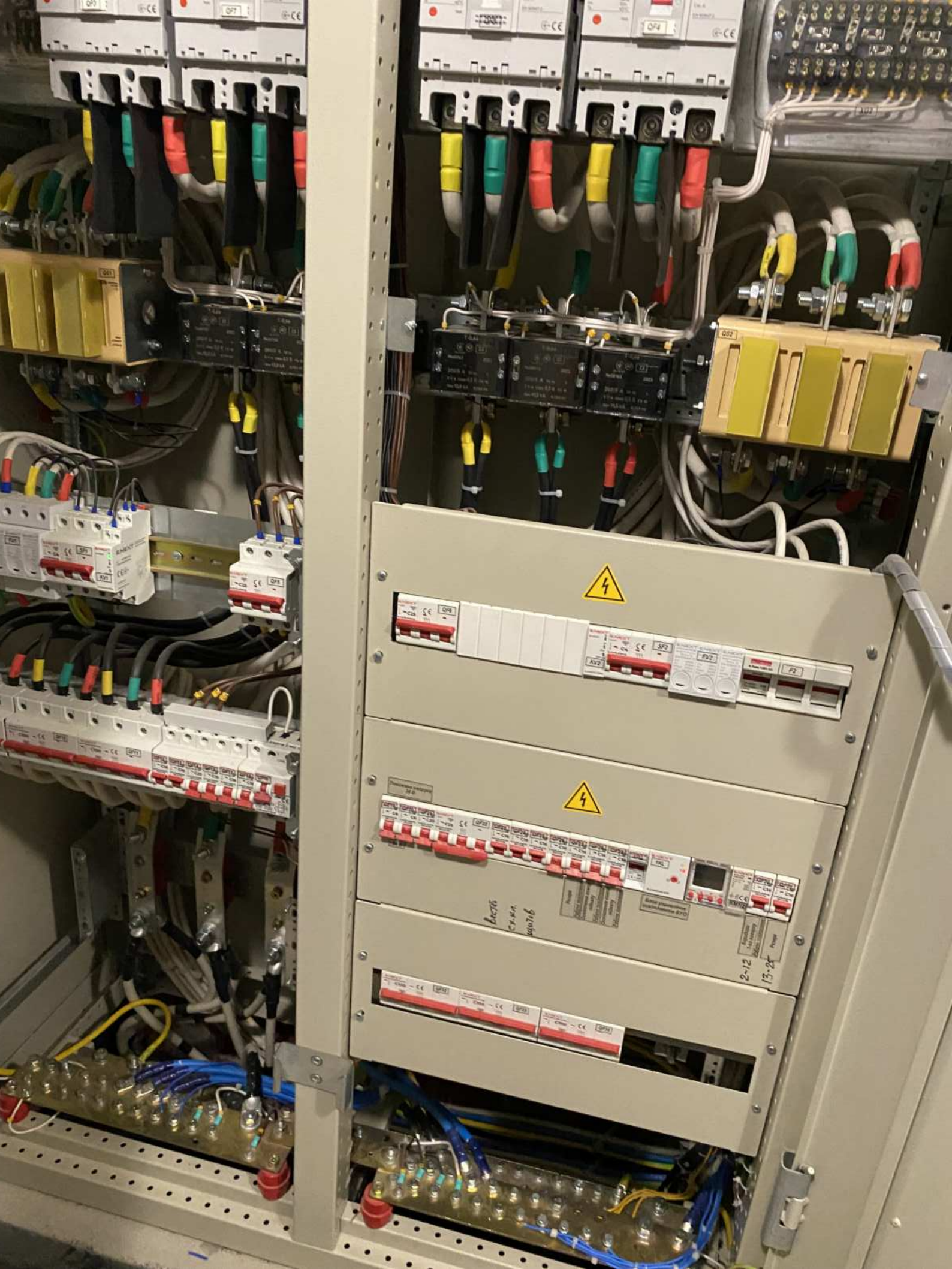
Terminal blocks and wiring in the lower left section.

Main grey control panel with terminal blocks and warning symbols in the lower right section.









Technical specifications and labels for the top row of circuit breakers, including ratings and manufacturer information.

Technical specifications and labels for the middle row of circuit breakers, including ratings and manufacturer information.

Technical specifications and labels for the bottom row of circuit breakers, including ratings and manufacturer information.

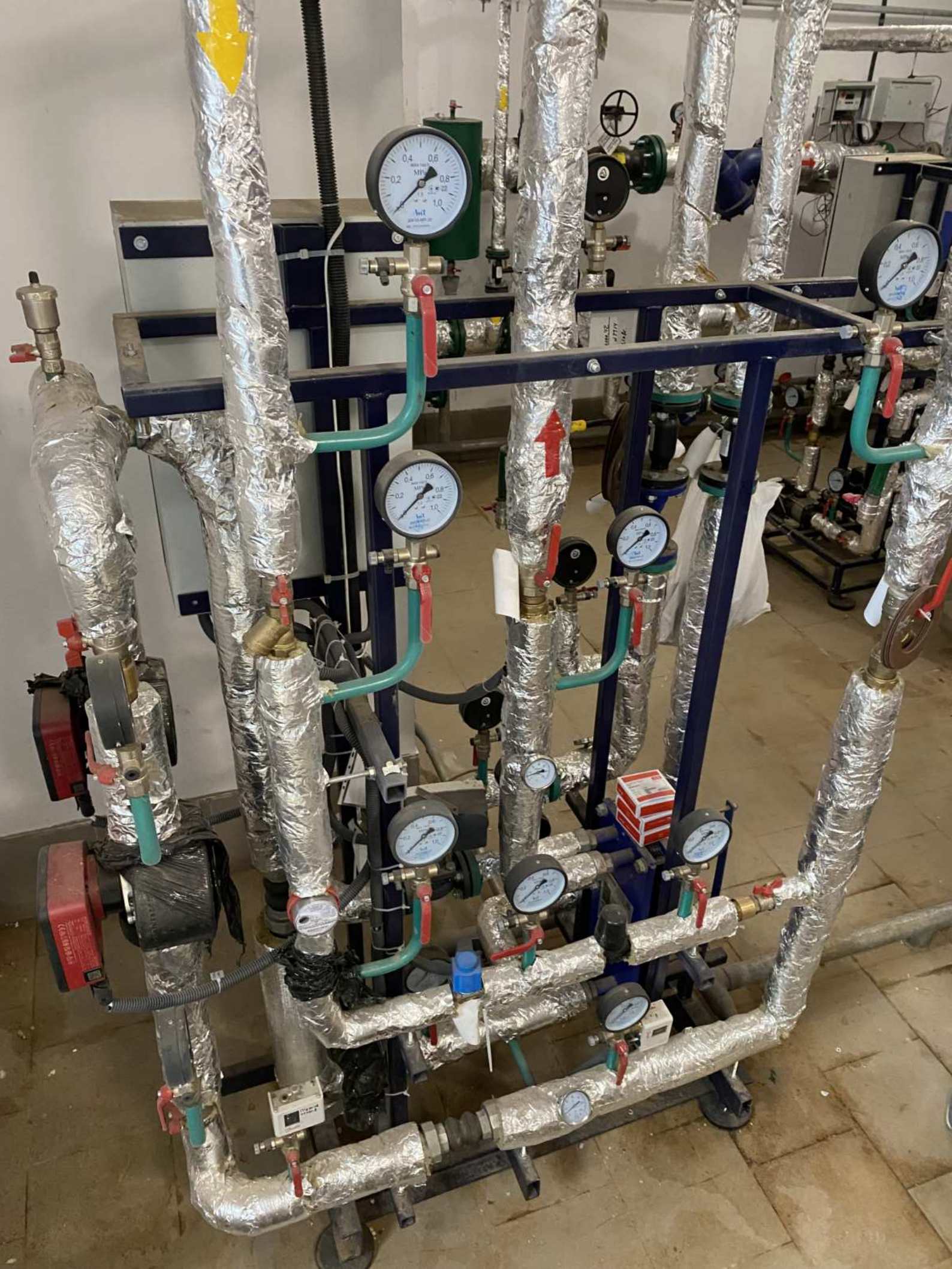
Handwritten text: *2-12*
13-24

Handwritten text: *2-12*
13-24





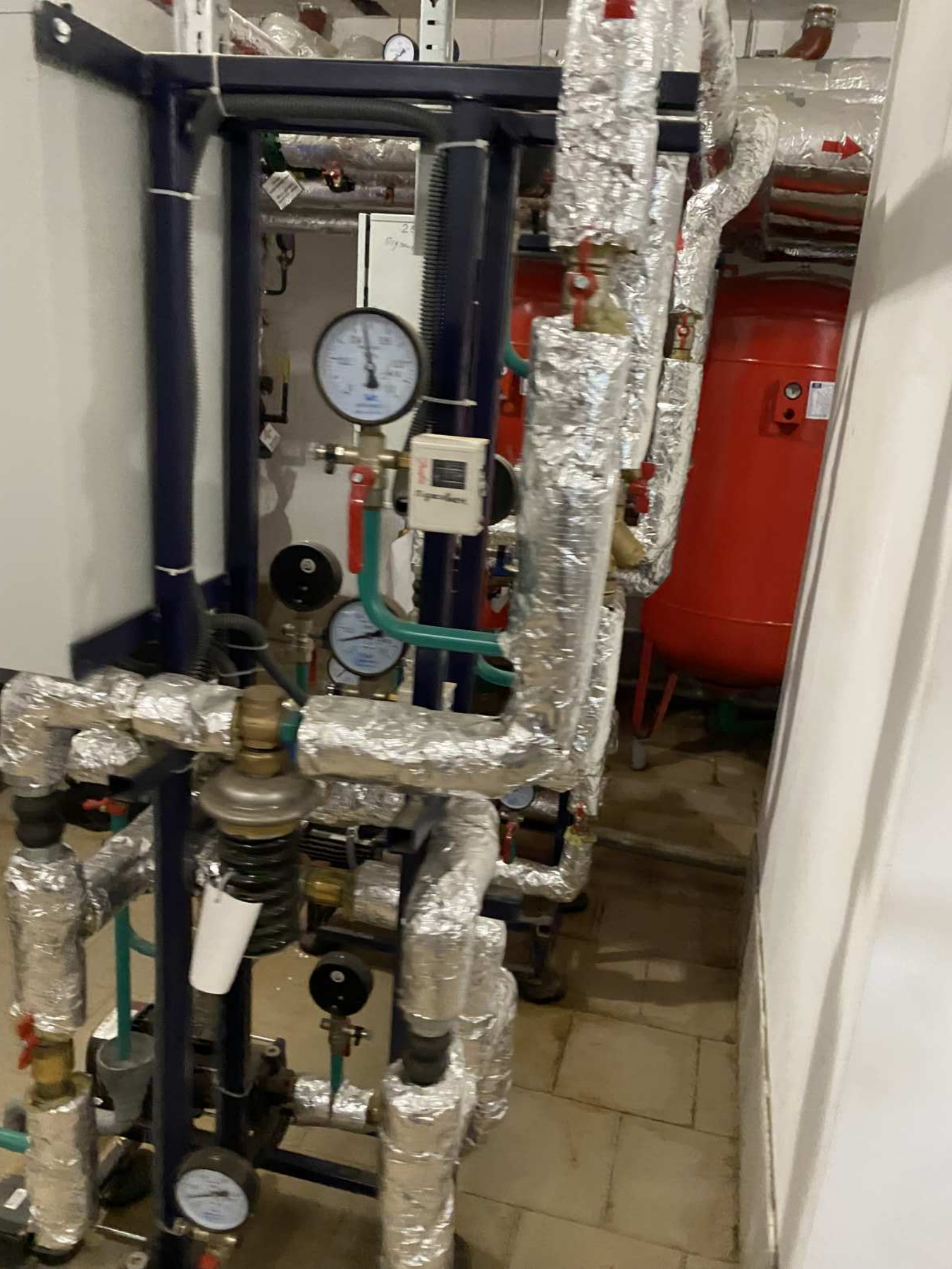
















A grey electrical control box with a yellow warning triangle and a keyhole on the right side. A thin antenna-like wire extends from the top of the box.



A vertical assembly of green pipe clamps and a blue valve. A white label with handwritten text is attached to the assembly. A black cable with a yellow connector is also visible.

A blue valve assembly mounted on a pipe, secured with green clamps.

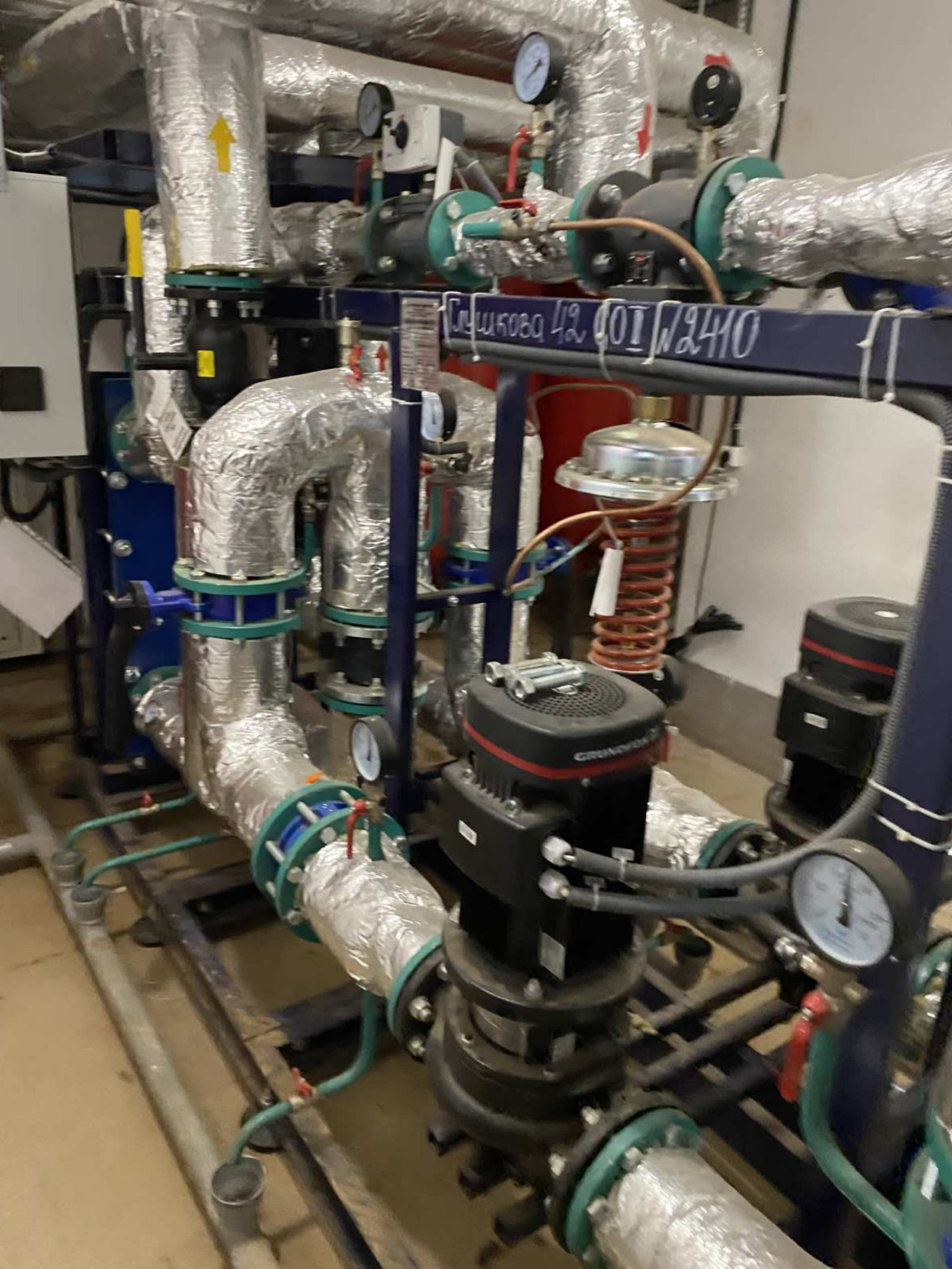
A vertical assembly of green pipe clamps and a valve with a yellow handle.











СЛУЖБОВА 412 001/2410

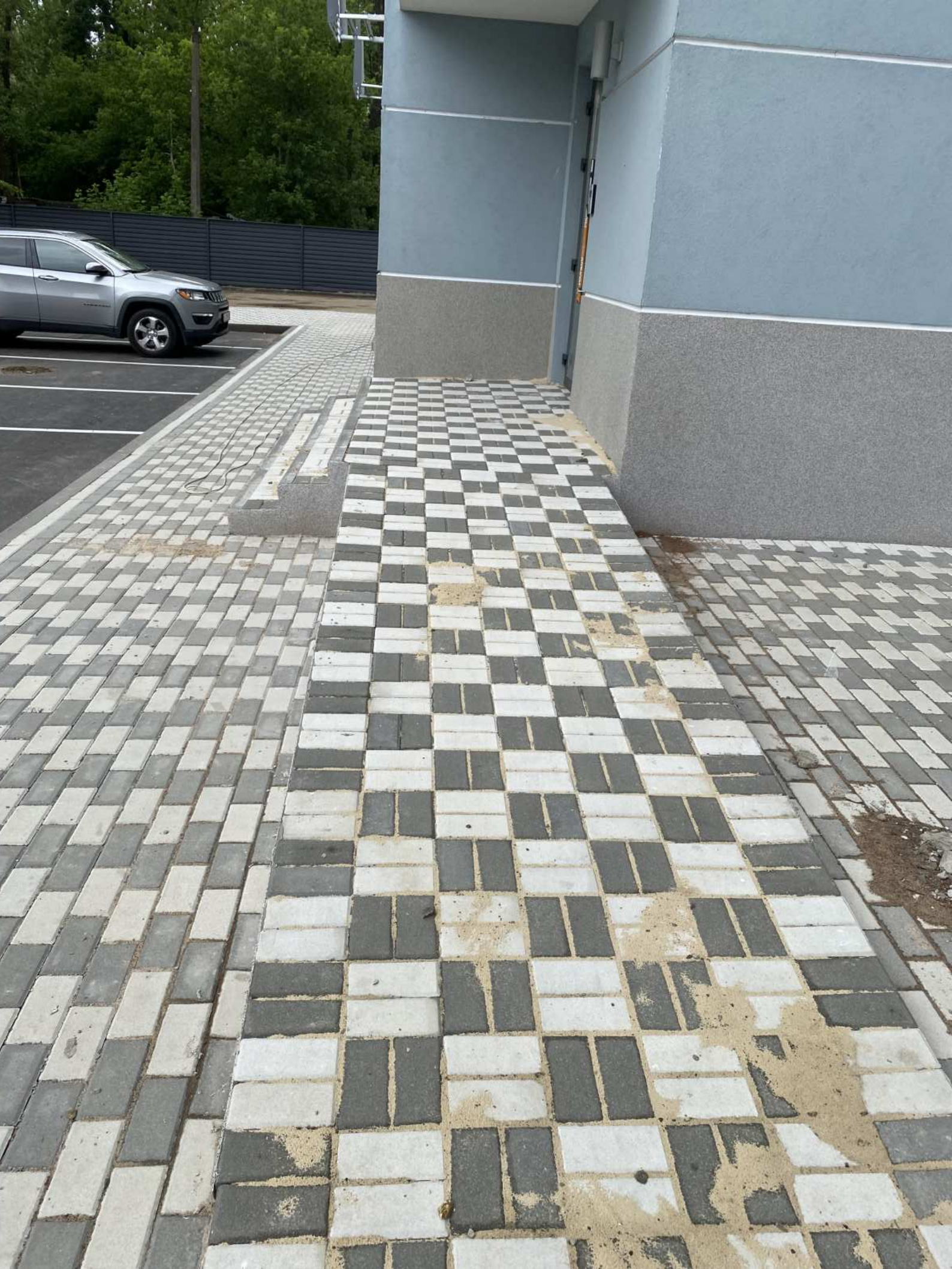
GRANDE















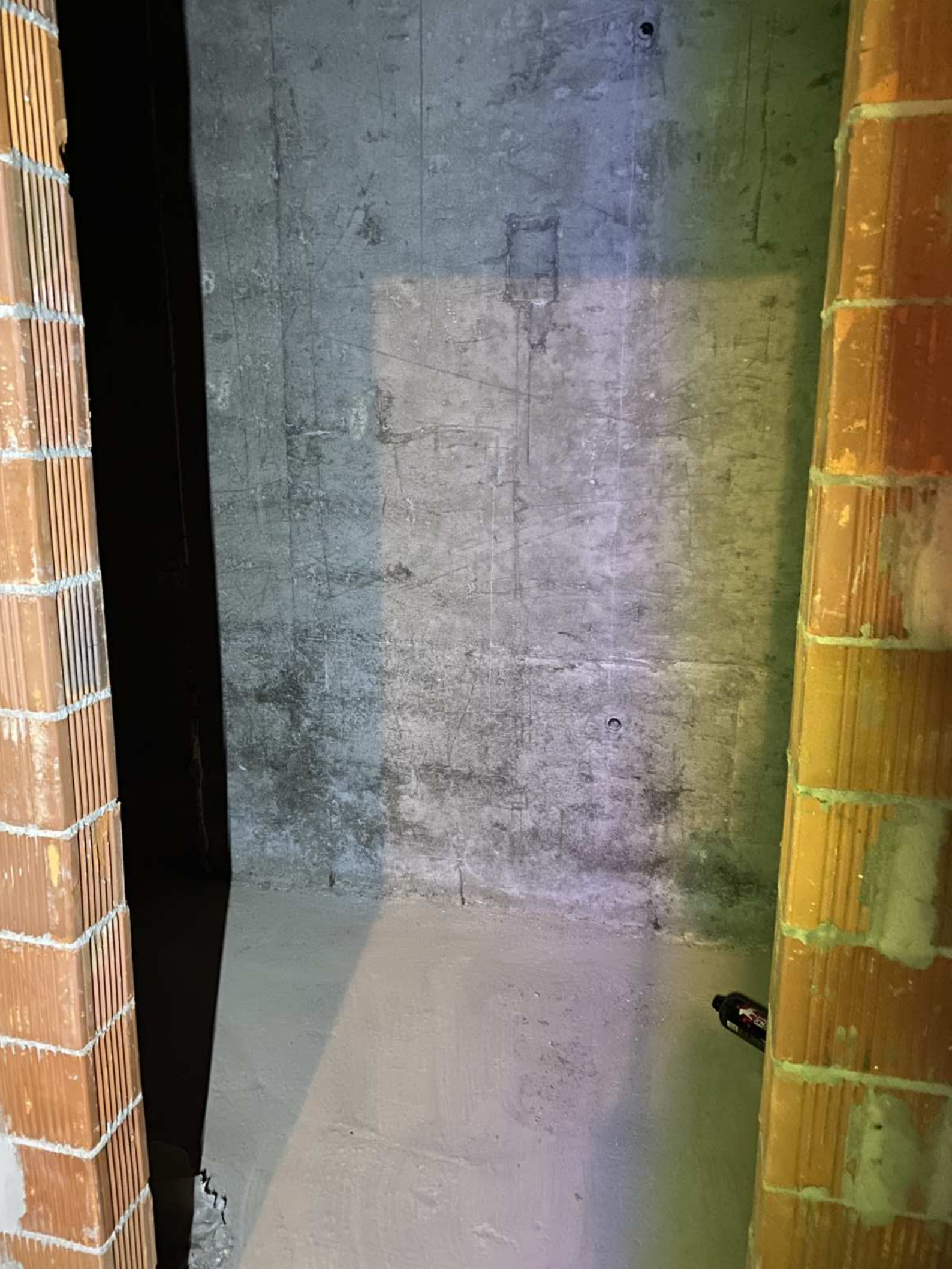






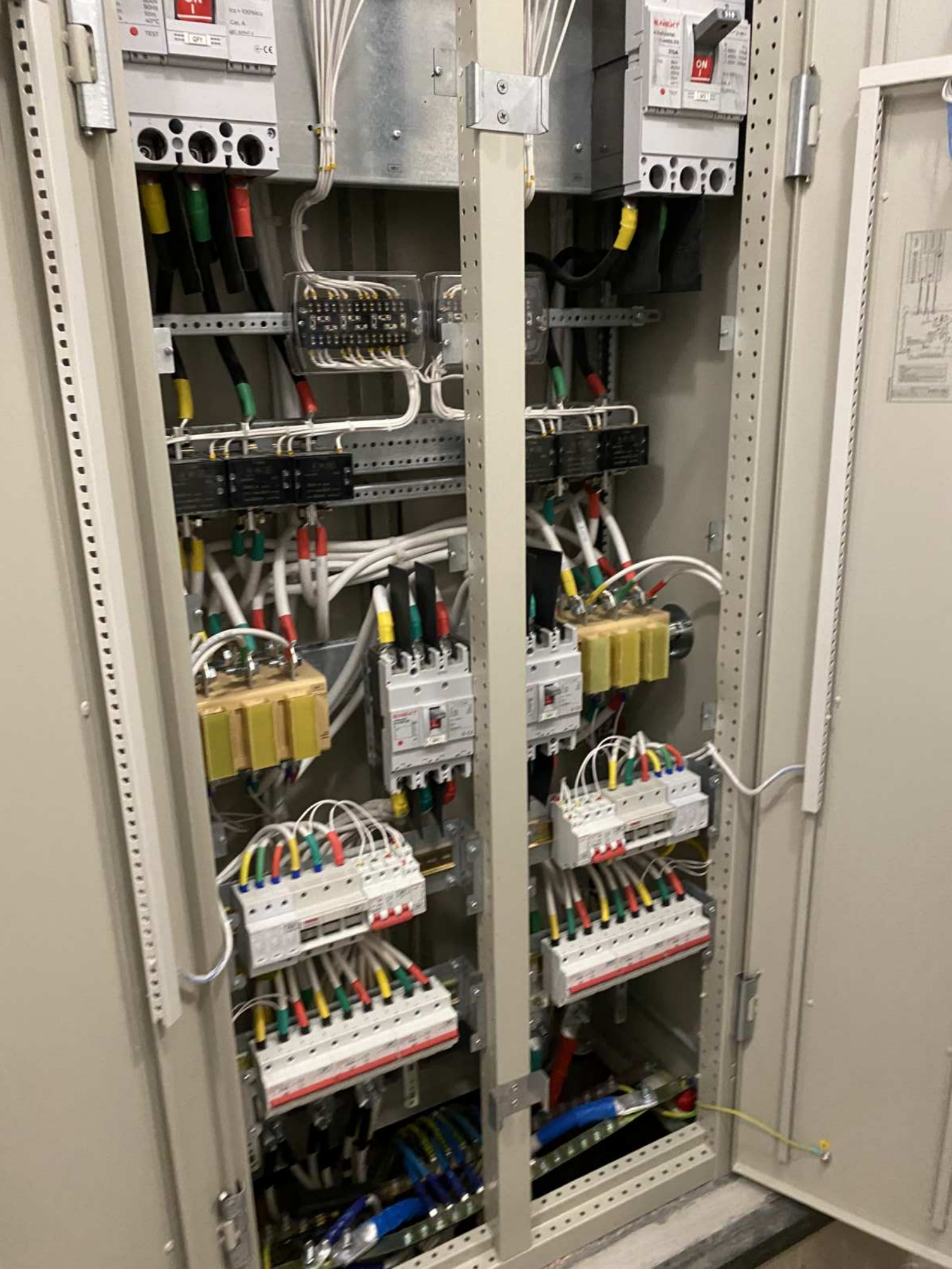


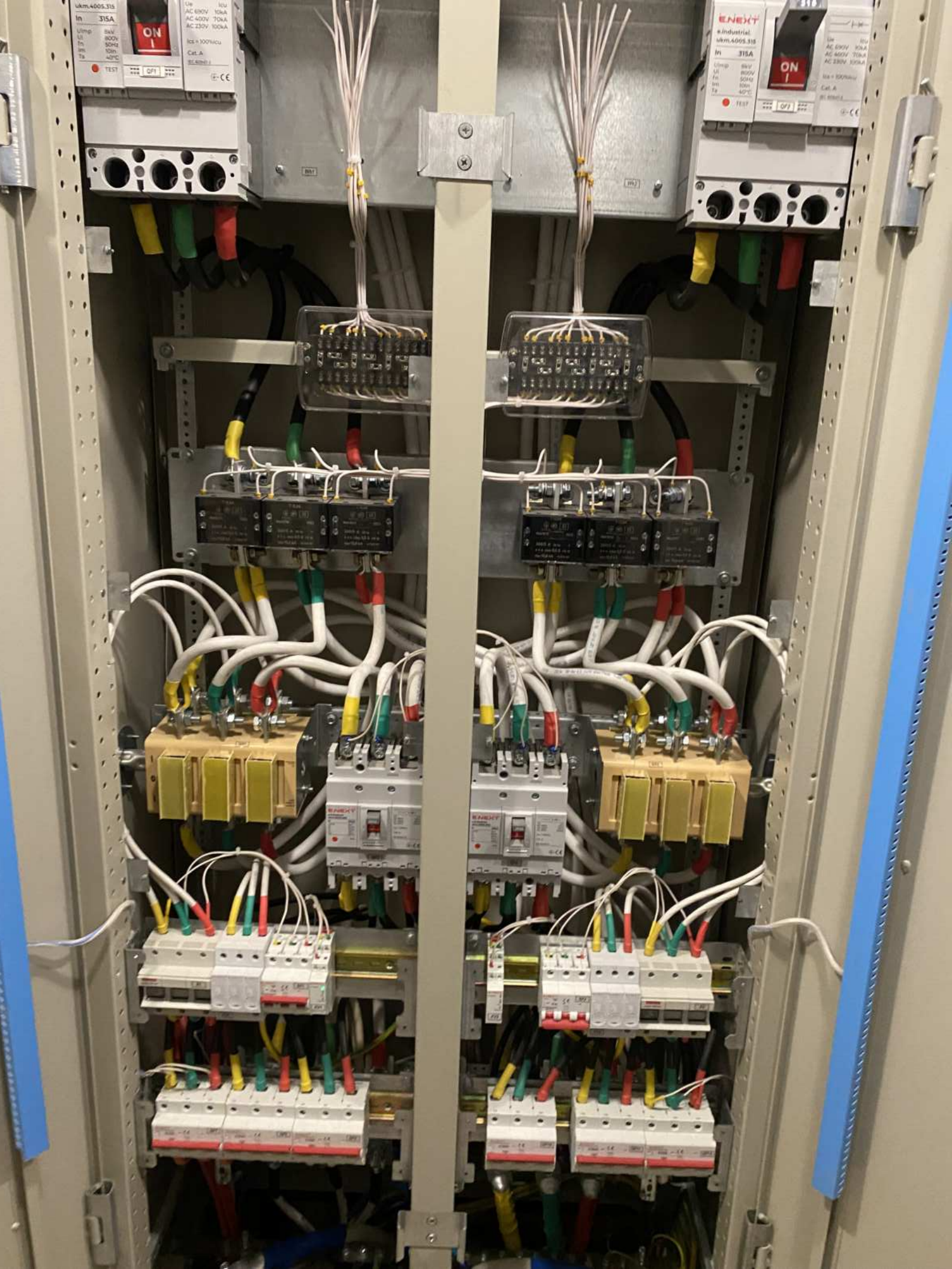


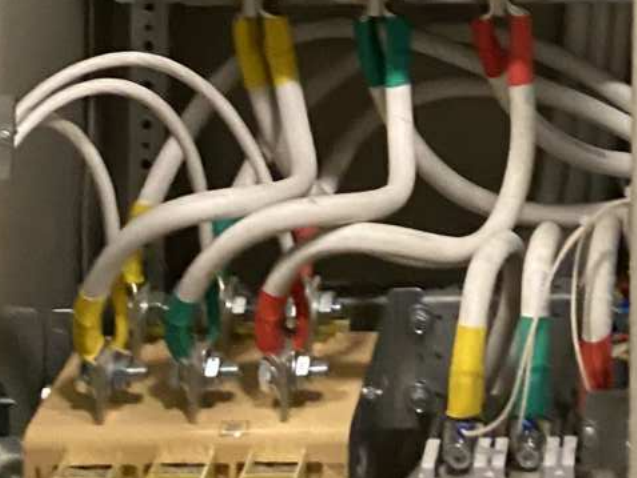










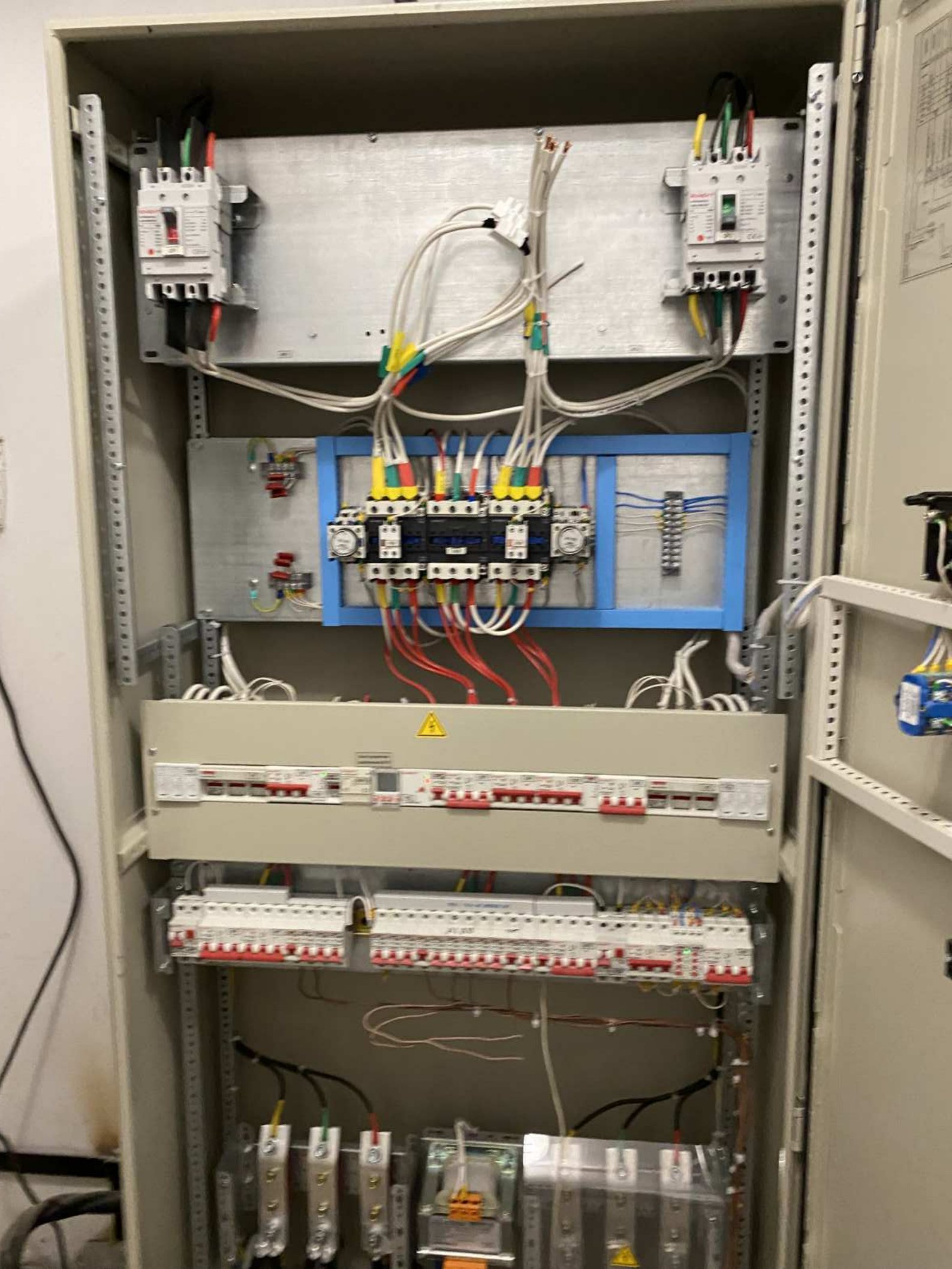




ELETION

Mer System













2450

















Small manufacturer's label in the top left corner.



513



514



515



516



517





Vertical text on the wall between the two elevator doors, likely a fire alarm or emergency instruction label.





697	705
698	706
699	707
700	708
701	709
702	710
703	711
704	712

721	729	737	745	753
722	730	738	746	754
723	731	739	747	755
724	732	740	748	756
725	733	741	749	757
726	734	742	750	758
727	735	743	751	759
728	736	744	752	760





600	601	602	603	604	605	606	607	608	609	610	611	612	613	614	615	616	617	618	619	620	621	622	623	624	625	626	627	628	629	630	631	632	633	634	635	636	637	638	639	640	641	642	643	644	645	646	647	648	649	650	651	652	653	654	655	656	657	658	659	660	661	662	663	664	665	666	667	668	669	670	671	672	673	674	675	676	677	678	679	680	681	682	683	684	685	686	687	688	689	690	691	692	693	694	695	696	697	698	699	700	701	702	703	704	705	706	707	708	709	710	711	712	713	714	715	716	717	718	719	720
-----	-----	-----	-----	-----	-----	-----	-----	-----	-----	-----	-----	-----	-----	-----	-----	-----	-----	-----	-----	-----	-----	-----	-----	-----	-----	-----	-----	-----	-----	-----	-----	-----	-----	-----	-----	-----	-----	-----	-----	-----	-----	-----	-----	-----	-----	-----	-----	-----	-----	-----	-----	-----	-----	-----	-----	-----	-----	-----	-----	-----	-----	-----	-----	-----	-----	-----	-----	-----	-----	-----	-----	-----	-----	-----	-----	-----	-----	-----	-----	-----	-----	-----	-----	-----	-----	-----	-----	-----	-----	-----	-----	-----	-----	-----	-----	-----	-----	-----	-----	-----	-----	-----	-----	-----	-----	-----	-----	-----	-----	-----	-----	-----	-----	-----	-----	-----	-----	-----	-----	-----

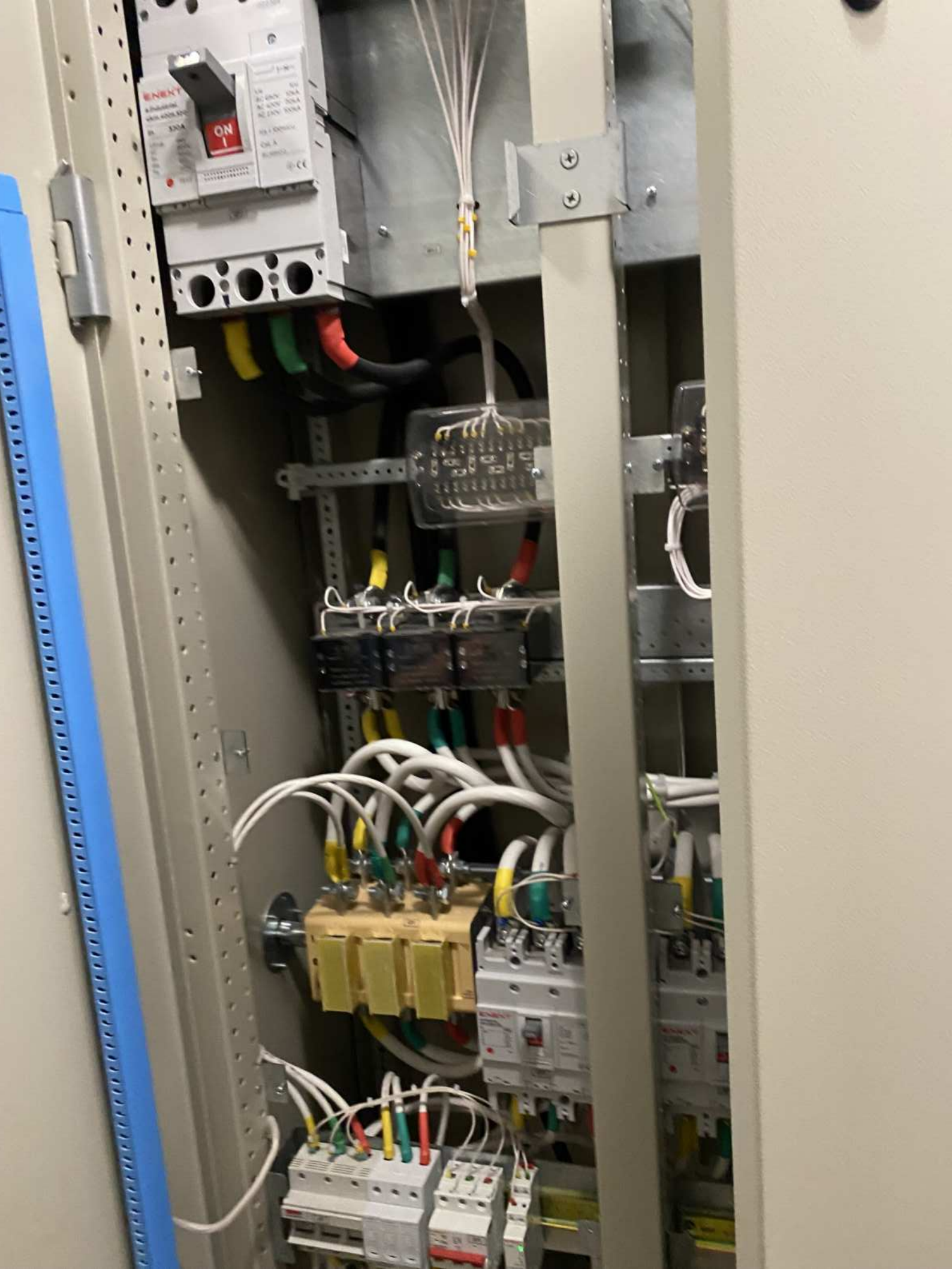
721
722
723
724
725
726
727
728



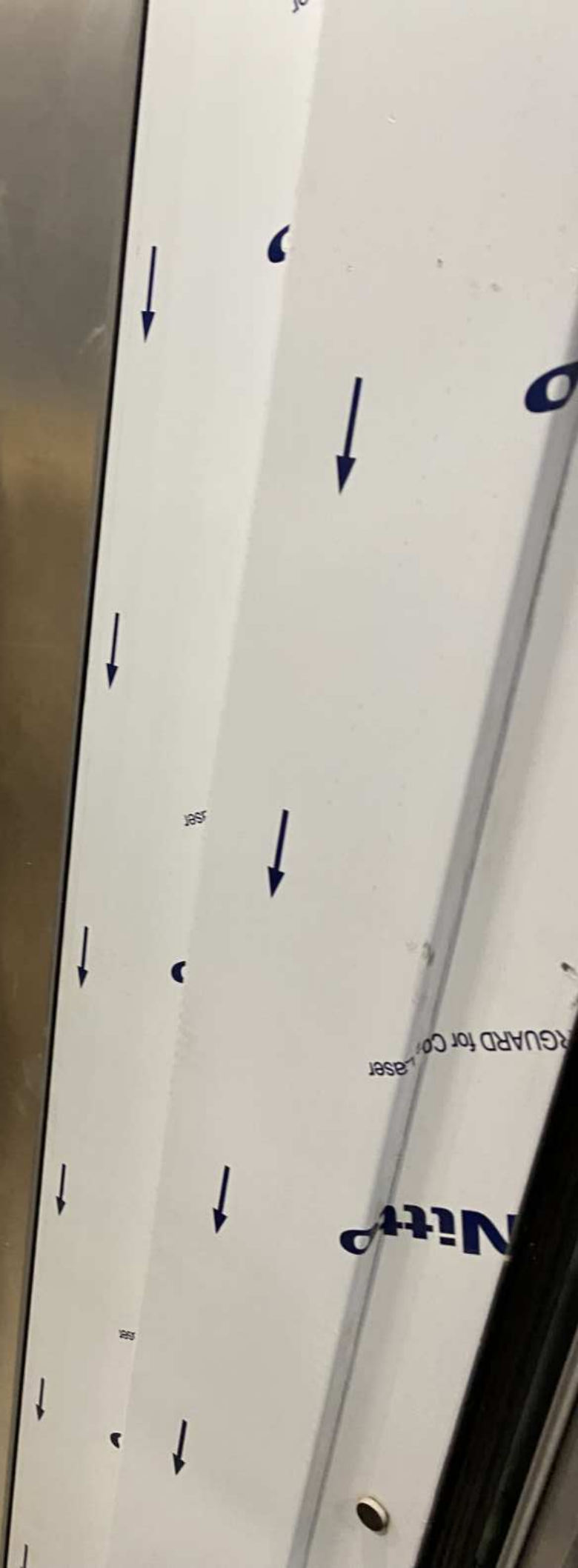












Nitto
GUARD for Co Laser





SAFETY SIGNAGE

Diagram of a fire alarm system with various components labeled.

28

Fire Alarm Control Unit

Emergency Stop Button

Electrical Panel



Small illegible label in the top left corner.



FRONT
CARGO AREA

ΕΛΚΤΡΟΝΙΚΑ
●6815●3445
ΒΑΛΙΜ







ELKTON, IA
981583495
BAAIM









ТОВ "Карат-Ліфткомплект"
м. Київ, вул. Пилипівська, 10
630 кг, 8 пасажирів
2023р. Зав. №2863

1

- 1
- 2
- 3
- 4
- 5
- 6
- 7
- 8
- 9
- 0
- 10
- 11
- 12
- 13
- 14
- 15



ЕЛЕКТРОМОНТАЖ
0681503415
БААИМ

РЕМОНТ ЕЛЕКТРОМОНТАЖ
0681503415
БААИМ



