









GAMA 100 Mod. G1Y 163
3K7 IP54
GAMA 100 Mod. G1Y 163
3K7 IP54
GAMA 100 Mod. G1Y 163
3K7 IP54

GAMA 100 Mod. G1Y 163
3K7 IP54
GAMA 100 Mod. G1Y 163
3K7 IP54
GAMA 100 Mod. G1Y 163
3K7 IP54

GAMA 100 Mod. G1Y 163
3K7 IP54
GAMA 100 Mod. G1Y 163
3K7 IP54
GAMA 100 Mod. G1Y 163
3K7 IP54

GAMA 100 Mod. G1Y 163
3K7 IP54
GAMA 100 Mod. G1Y 163
3K7 IP54
GAMA 100 Mod. G1Y 163
3K7 IP54

GAMA 100 Mod. G1Y 163
3K7 IP54
GAMA 100 Mod. G1Y 163
3K7 IP54
GAMA 100 Mod. G1Y 163
3K7 IP54

GAMA 100 Mod. G1Y 163
3K7 IP54
GAMA 100 Mod. G1Y 163
3K7 IP54
GAMA 100 Mod. G1Y 163
3K7 IP54







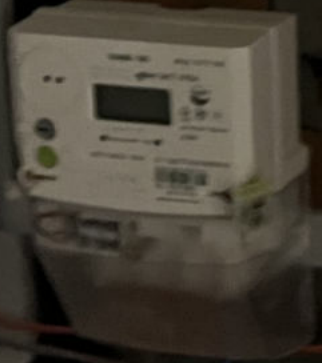
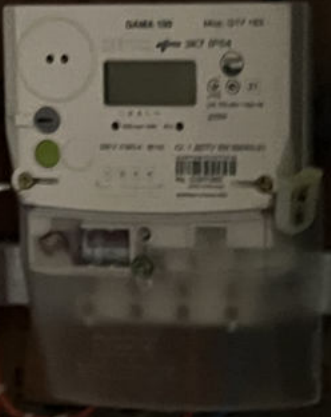
































12 gam





BAYLAN

0000 m³

M21 UA.TR.001 183-18
UA.TR.001

10.000 l
10 H
0.2 m³/h



K=10

64108
0203
" " "
0.2%
-0.4%
-1.1%
37-09-809/B



ТРОКІЛІК

POM





1





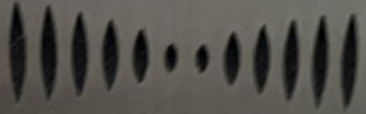








ВАГТАЖАКІСЬЦЬ 630 KG
PERSONS 8
КІЛЬКІСТЬ ПАСАЖЕРІВ 8
MANUFACTURE DATE 2021 year / рік
ДАТА ВИРОБИТВА 2021 year / рік
NO SMOKING
НЕ ПАЛІТИ



Emergency call button (bell icon)

Emergency call button (phone handset icon)

Emergency call button (person icon)

Number 4 button

Number 5 button

Number 2 button

Number 3 button

Number 0 button

Number 1 button (highlighted in green)

Left arrow button

Right arrow button



1







GAMA 100 Mod. QTY 103
3x7 3P54
220V 5.00A 50Hz
ID: 1.227V EN 62053-21

GAMA 100 Mod. QTY 103
3x7 3P54
220V 5.00A 50Hz
ID: 1.227V EN 62053-21

GAMA 100 Mod. QTY 103
3x7 3P54
220V 5.00A 50Hz
ID: 1.227V EN 62053-21

GAMA 100 Mod. QTY 103
3x7 3P54
220V 5.00A 50Hz
ID: 1.227V EN 62053-21

GAMA 100 Mod. QTY 103
3x7 3P54
220V 5.00A 50Hz
ID: 1.227V EN 62053-21

GAMA 100 Mod. QTY 103
3x7 3P54
220V 5.00A 50Hz
ID: 1.227V EN 62053-21



19629254

19629255

19629260

19629260

2-1/2" bar - 4-1/2" bar - 5-1/2" bar - 6-1/2" bar - 8-1/2" bar - 10-1/2" bar - 12-1/2" bar







19629227

19629229

19629230

19629231



A white, rectangular water heater is mounted on a vertical concrete pillar. It features a control panel with two knobs and a digital display. A white vent pipe is visible at the top.

A white electrical outlet is mounted on the brick wall. A white cord is plugged into it and hangs down.

A white gas meter is mounted on the brick wall. It is connected to a network of copper pipes.

A network of copper pipes is installed. A vertical pipe runs down the right side of the wall. A horizontal pipe runs across the middle of the room. A pipe connects the water heater to the gas control valve, and another pipe connects the gas control valve to the gas meter.









The image shows the interior of a grey metal cabinet housing a complex plumbing system. The system includes several vertical pipes wrapped in grey insulation, a network of horizontal pipes with brass fittings, and several red-handled shut-off valves. There are also several white circular gauges or pressure sensors. The pipes are set against a brick wall, and the area is filled with various plumbing components and fittings.

CEMARK
500
PORTLAND CEMENT
NET WEIGHT 50 LBS (22.7 kg)
NET VOLUME 3.5 cu ft (0.1 m³)



1M
Промислов

