





















33KM







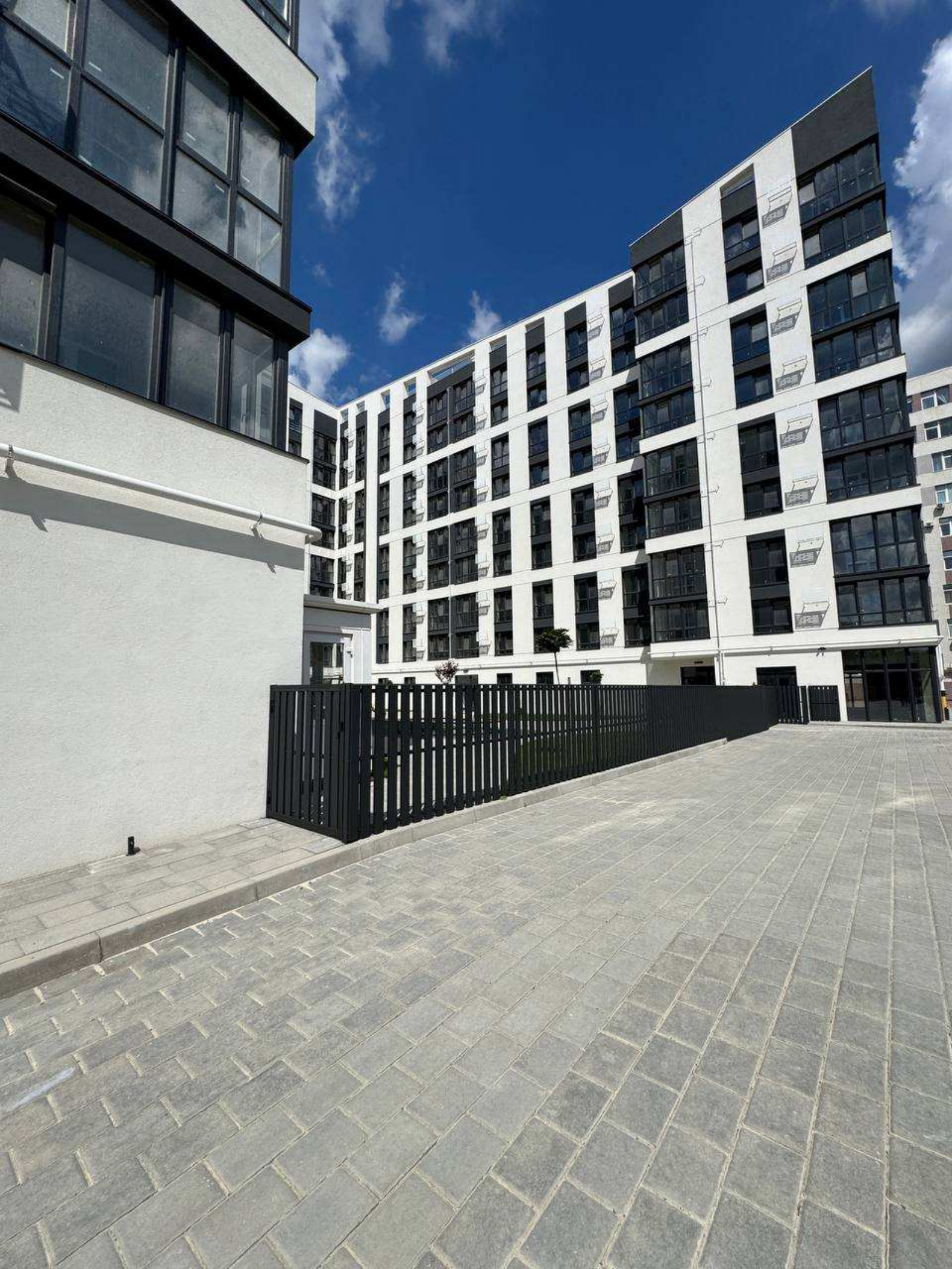




























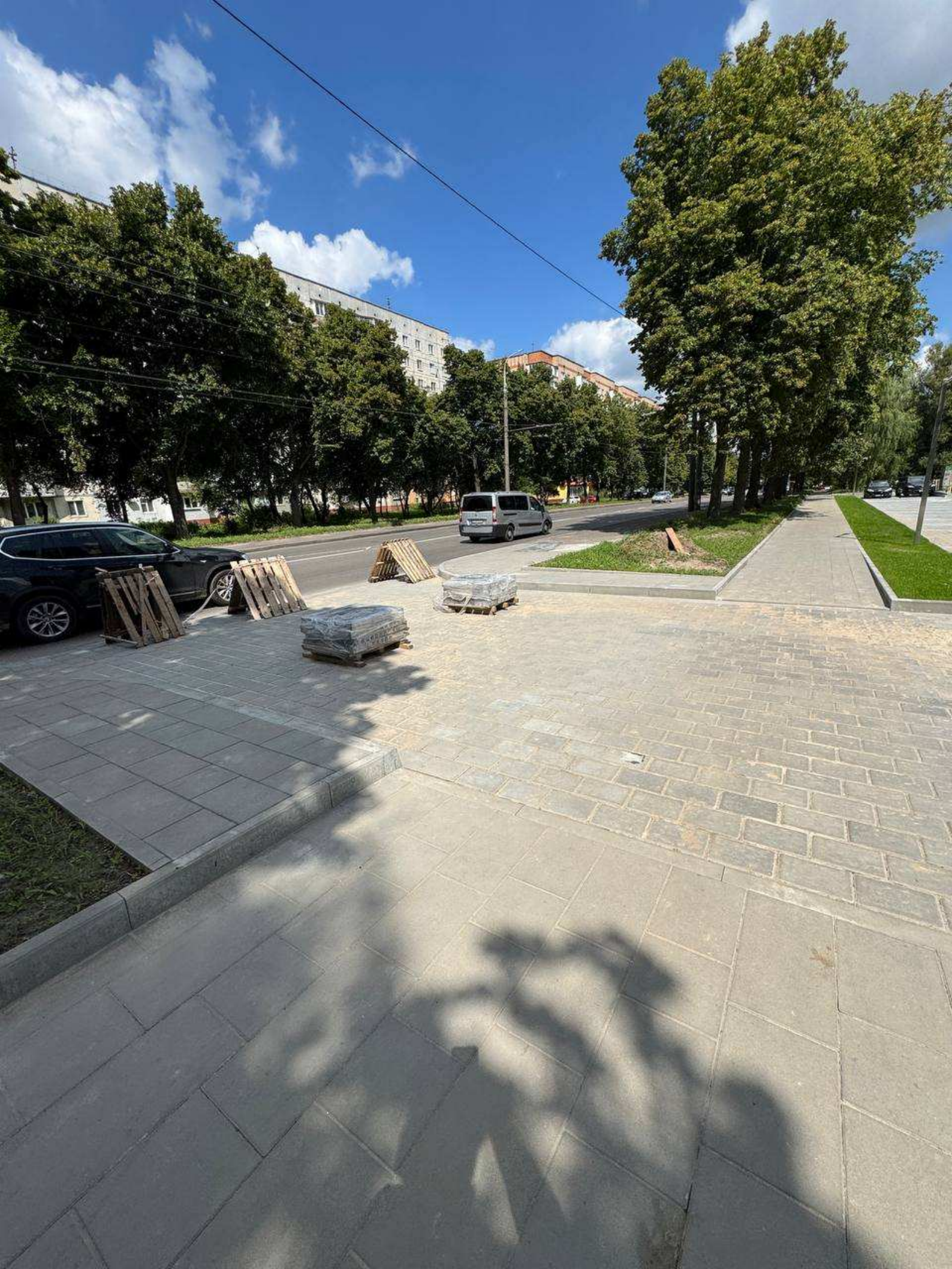












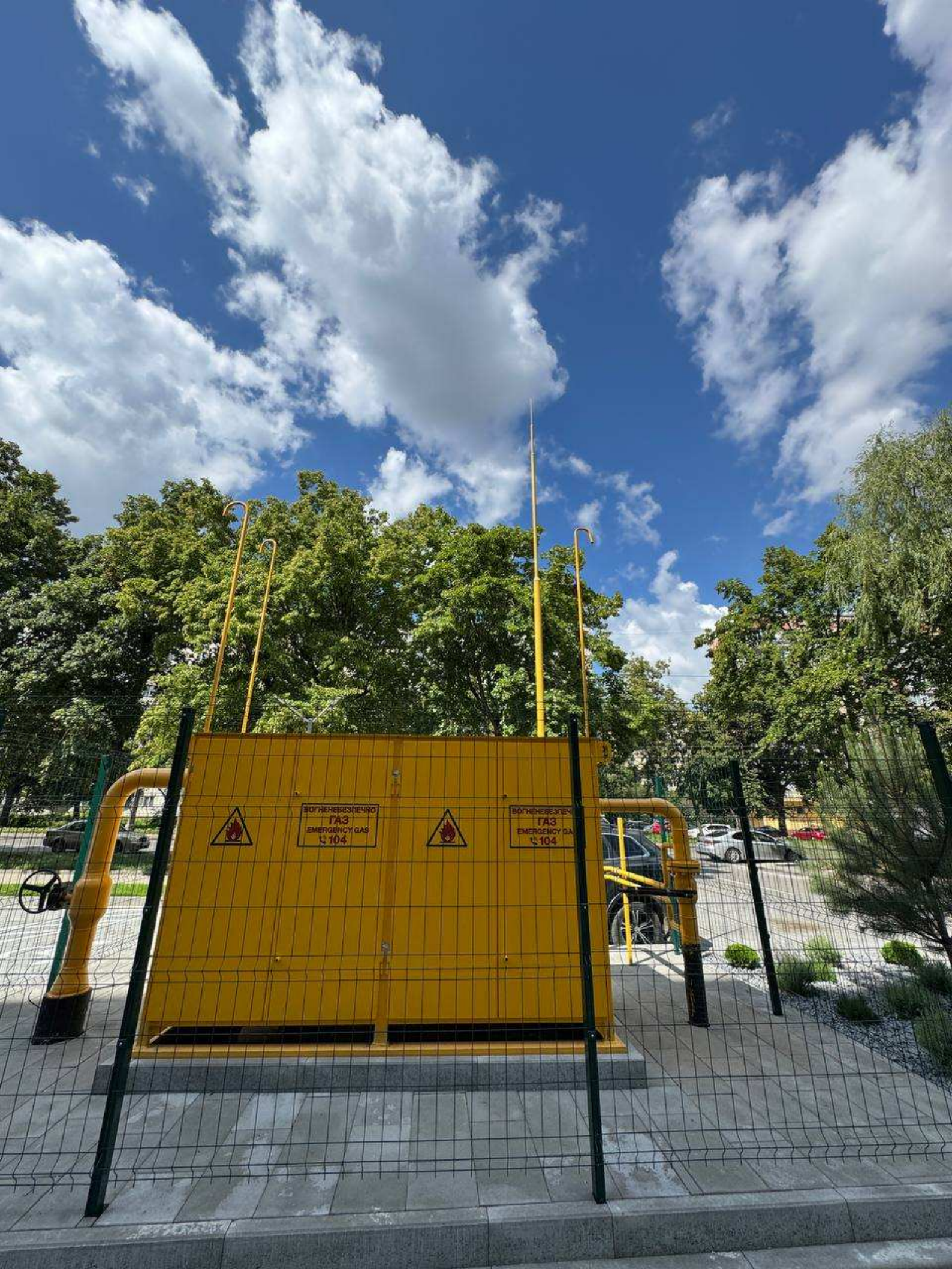












ВОГНЕБЕЗПЕЧНО
ГАЗ
EMERGENCY GAS
☎ 104



ВОГНЕБЕЗПЕЧНО
ГАЗ
EMERGENCY GAS
☎ 104

































7 ПОВЕРХ
⠠⠇ ⠠⠠⠠⠠⠠⠠⠠⠠⠠⠠⠠⠠⠠⠠⠠⠠⠠⠠⠠

7 ПОВЕРХ
⠠⠇ ⠠⠠⠠⠠⠠⠠⠠⠠⠠⠠⠠⠠⠠⠠⠠⠠⠠⠠⠠







Базисний пункт
УНВРР
+0 kanc
baza
+0 kanc
baza
+0 kanc
baza









1 ПОВЕРХ
⠠ ⠠ ⠠ ⠠ ⠠ ⠠ ⠠ ⠠

1 ПОВЕРХ
⠠ ⠠ ⠠ ⠠ ⠠ ⠠ ⠠ ⠠



© ПРОБЕЖКА
17.11.2024







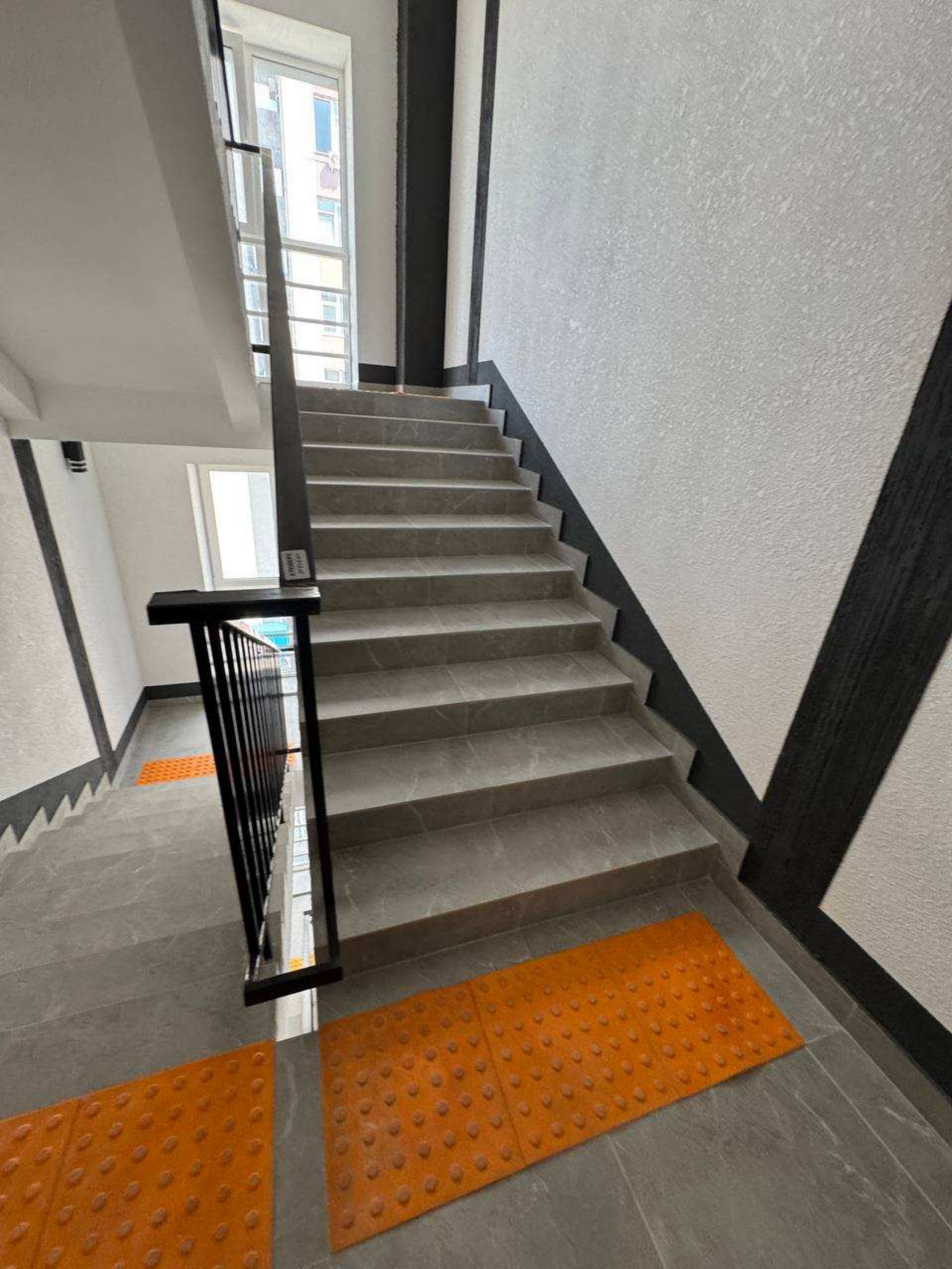






























AUGUSTA EVO





Light fixture

Vertical control panel with digital display and buttons

Large clear plastic bag

Light-colored wood or laminate floor

JUSTA EVO

Down arrow icon

Down arrow icon

104838001













Schneider
Schneider
Schneider
Schneider
Schneider
Schneider
Schneider
Schneider
Schneider

1ON
1ON
1ON
1ON
1ON
1ON
1ON
1ON
1ON

C05
C10
C18
C16
C18
C10
C16

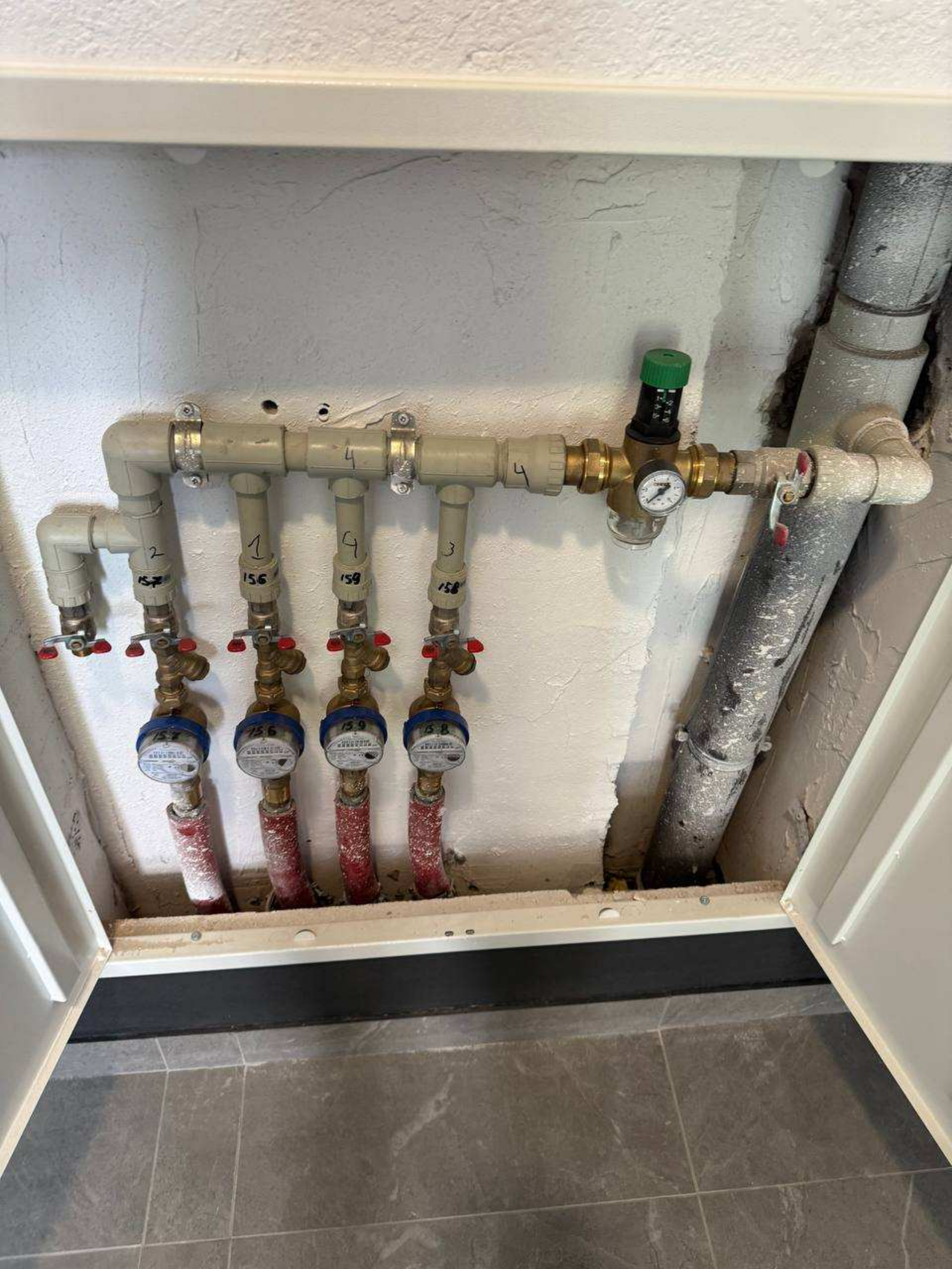


















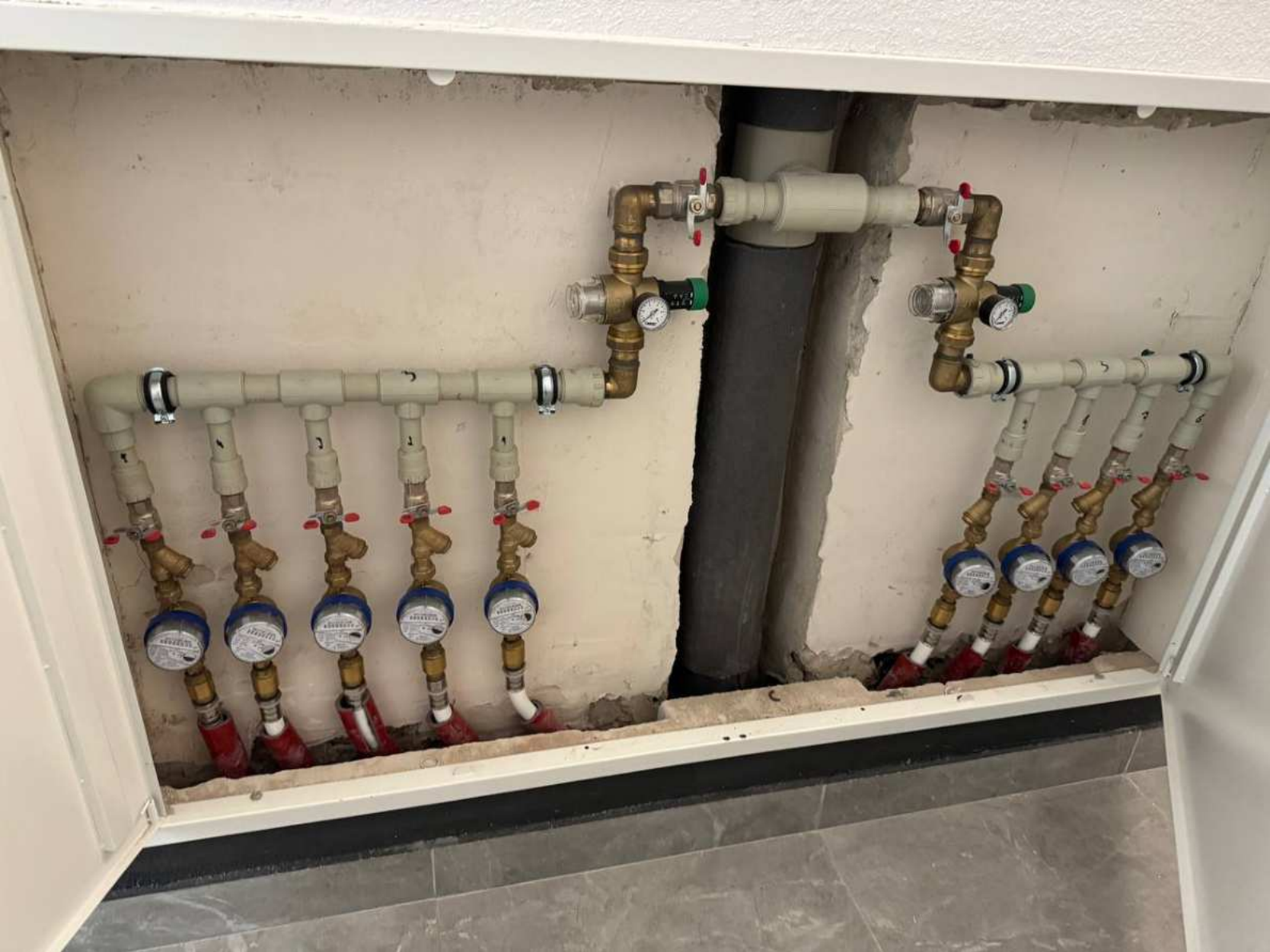
9 8
6 7 5
3 4 2
1



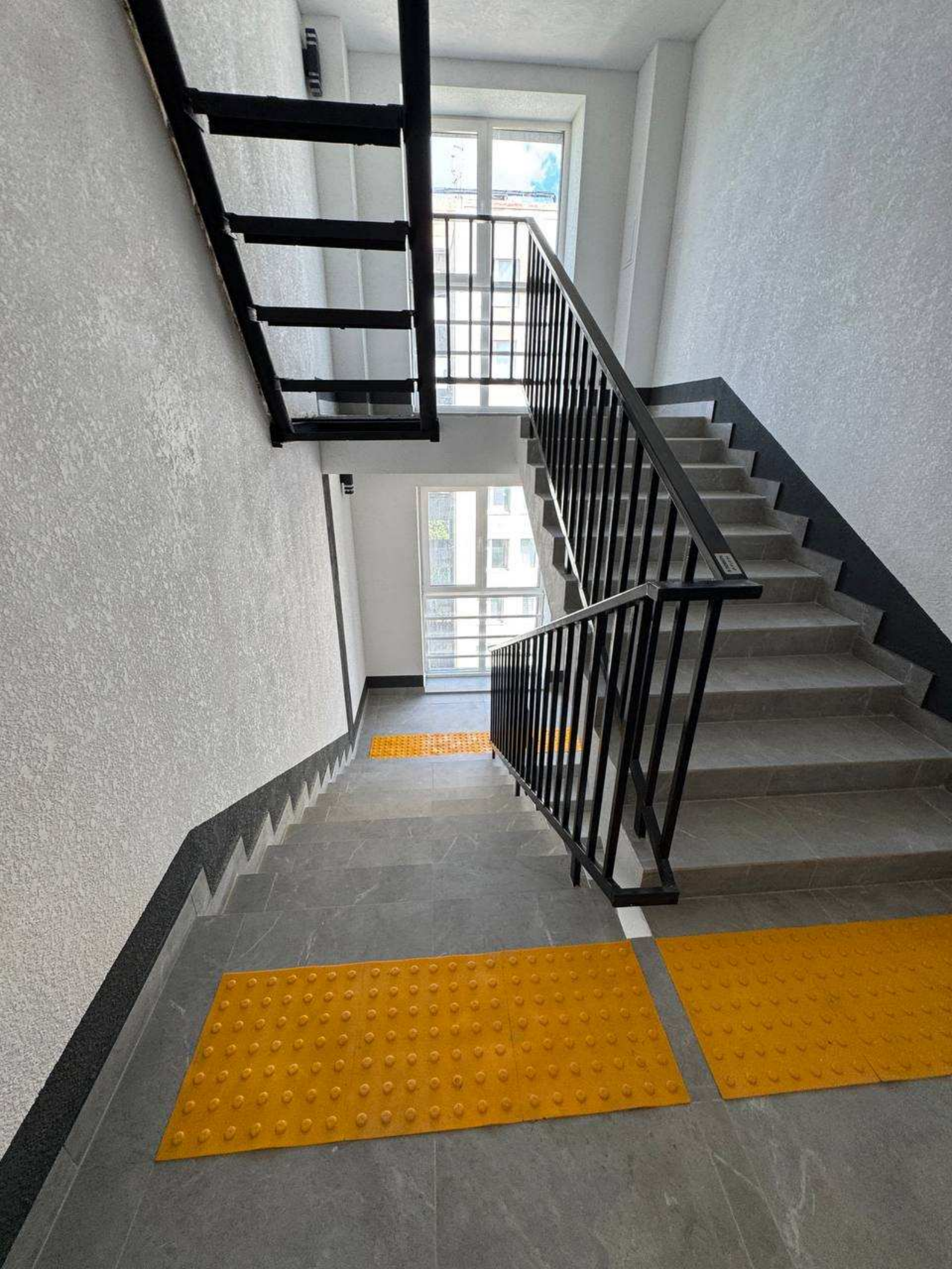


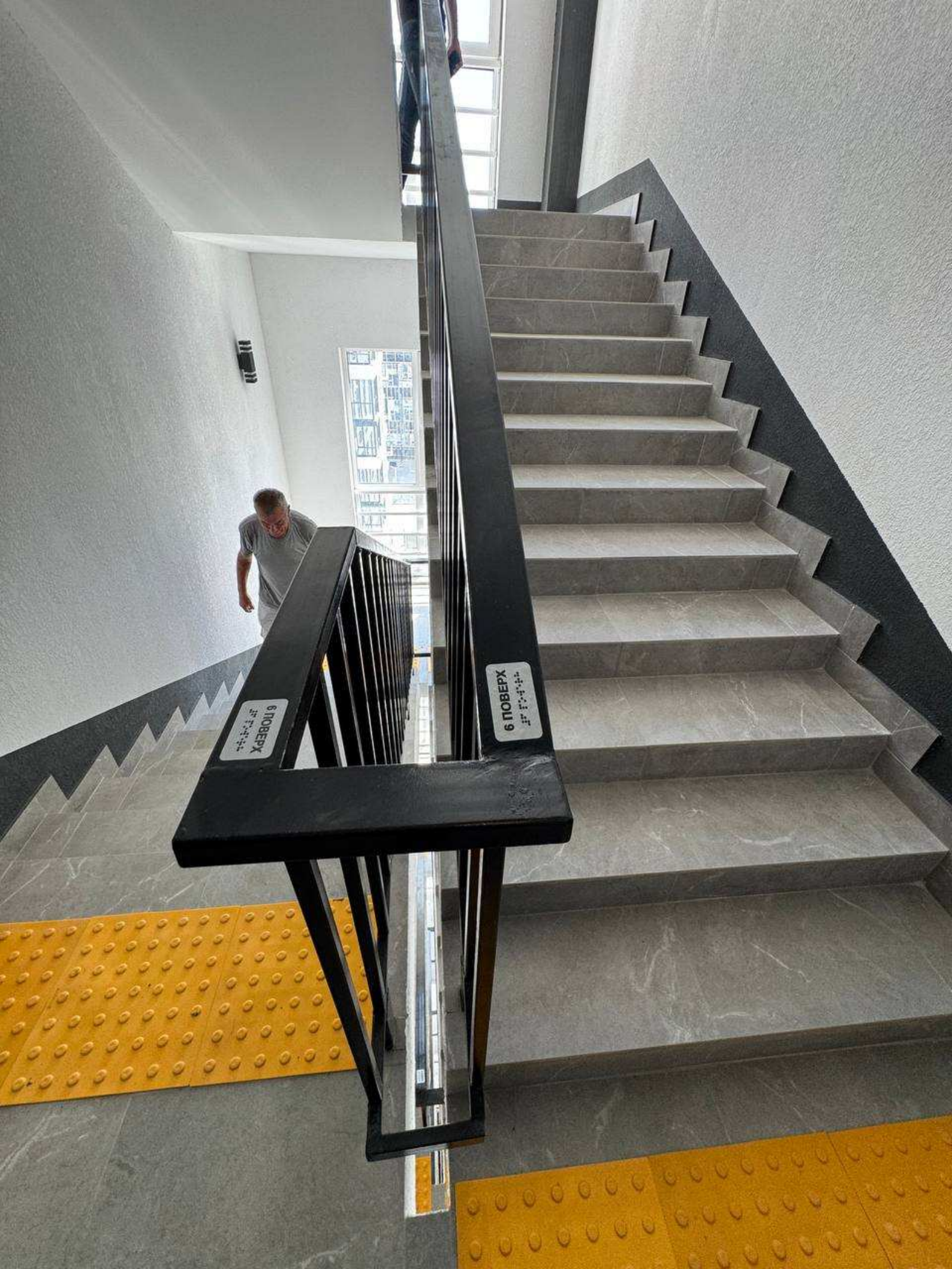












6 ПОВЕРХ
⠠⠆⠠⠠⠠⠠⠠

6 ПОВЕРХ
⠠⠆⠠⠠⠠⠠⠠





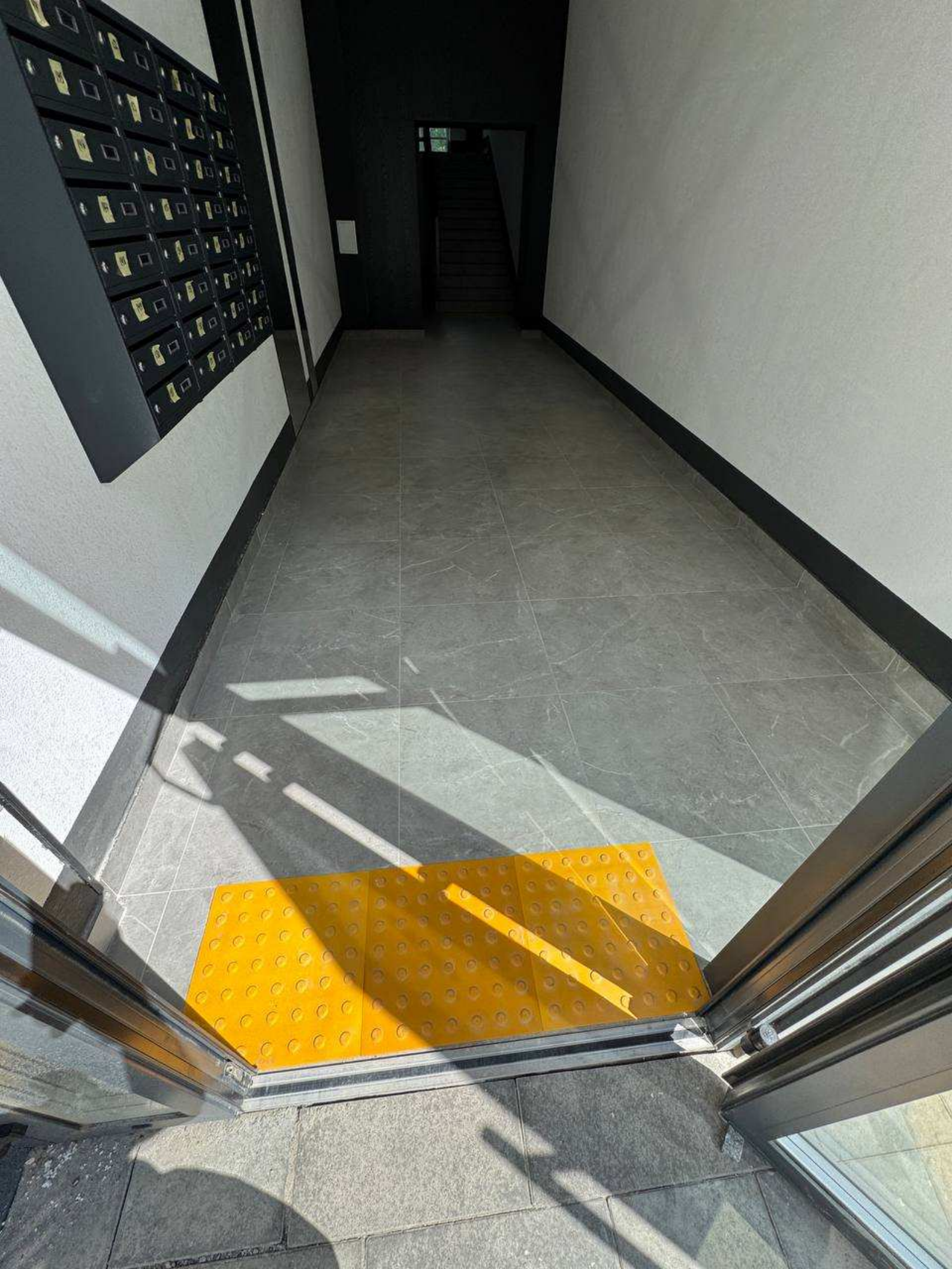


M24
G4
24MUGT 24 11005924009 JB T
APATOR
00000000000000000000
00000032.5 m³
№ 05824009 2024

104i SMART
AT ЛЬВІВГАЗ
2





















ВИХІД

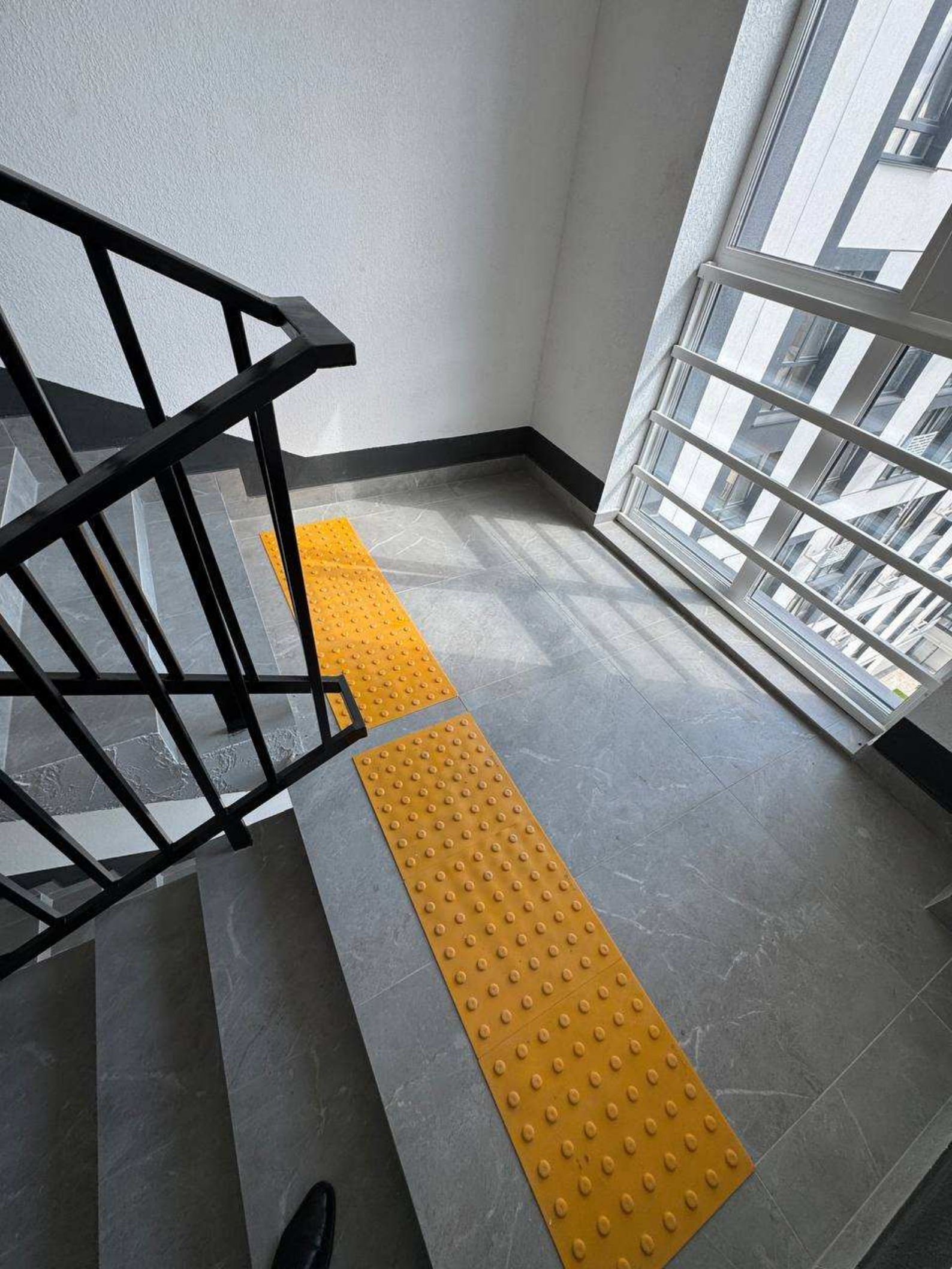












































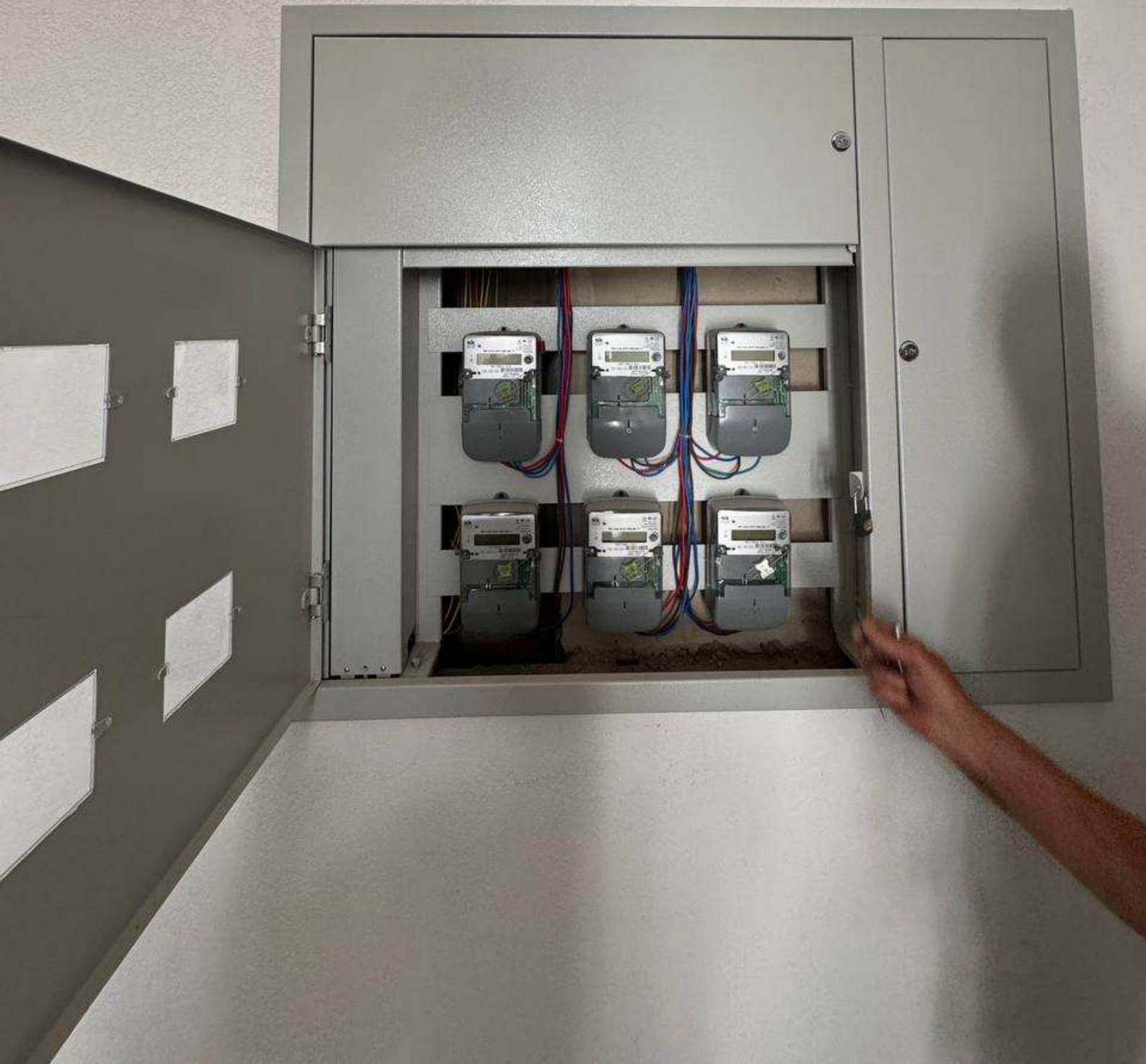
ВИХІД



ВИХІД
EXIT













100
85
75
70











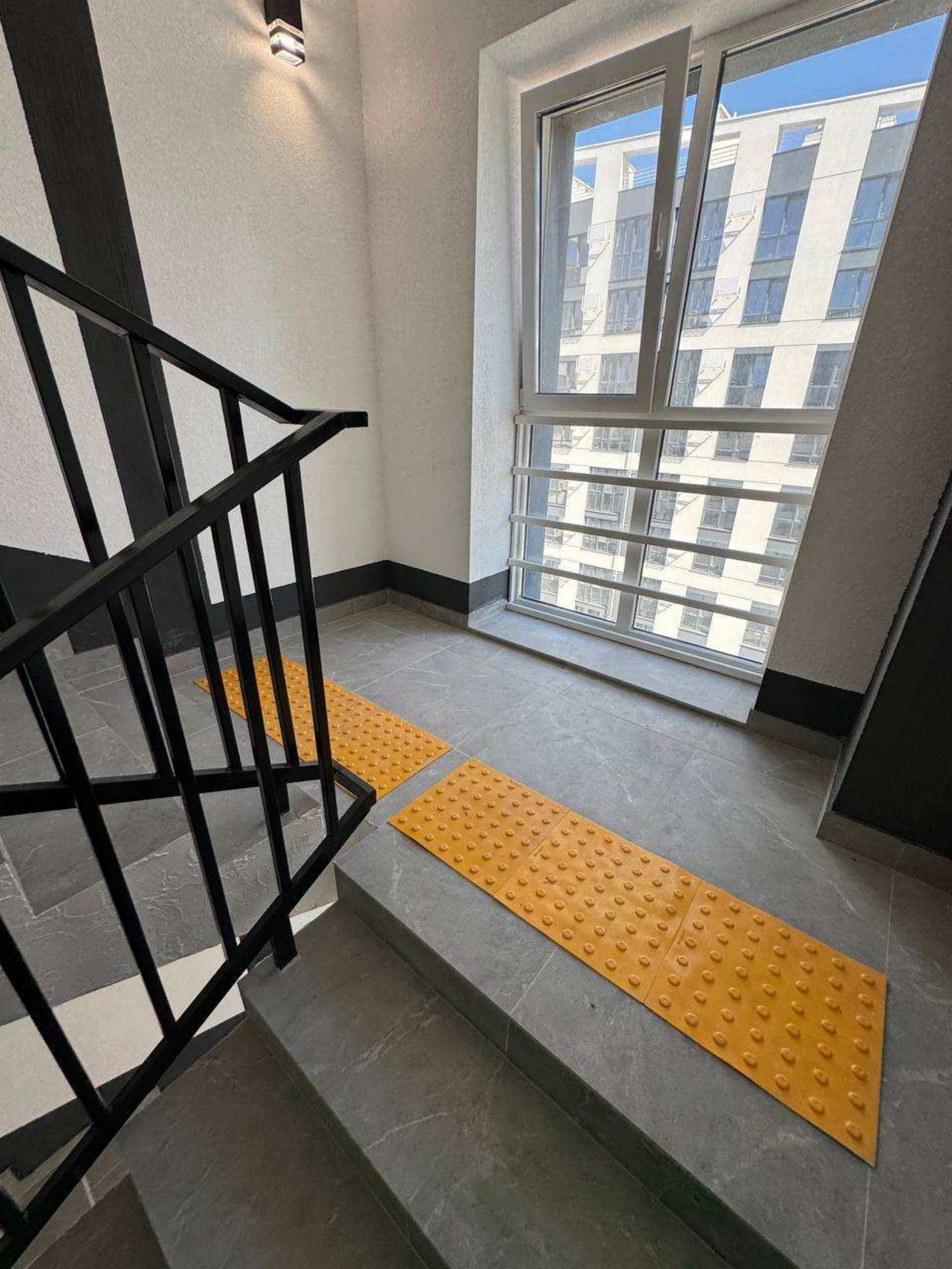


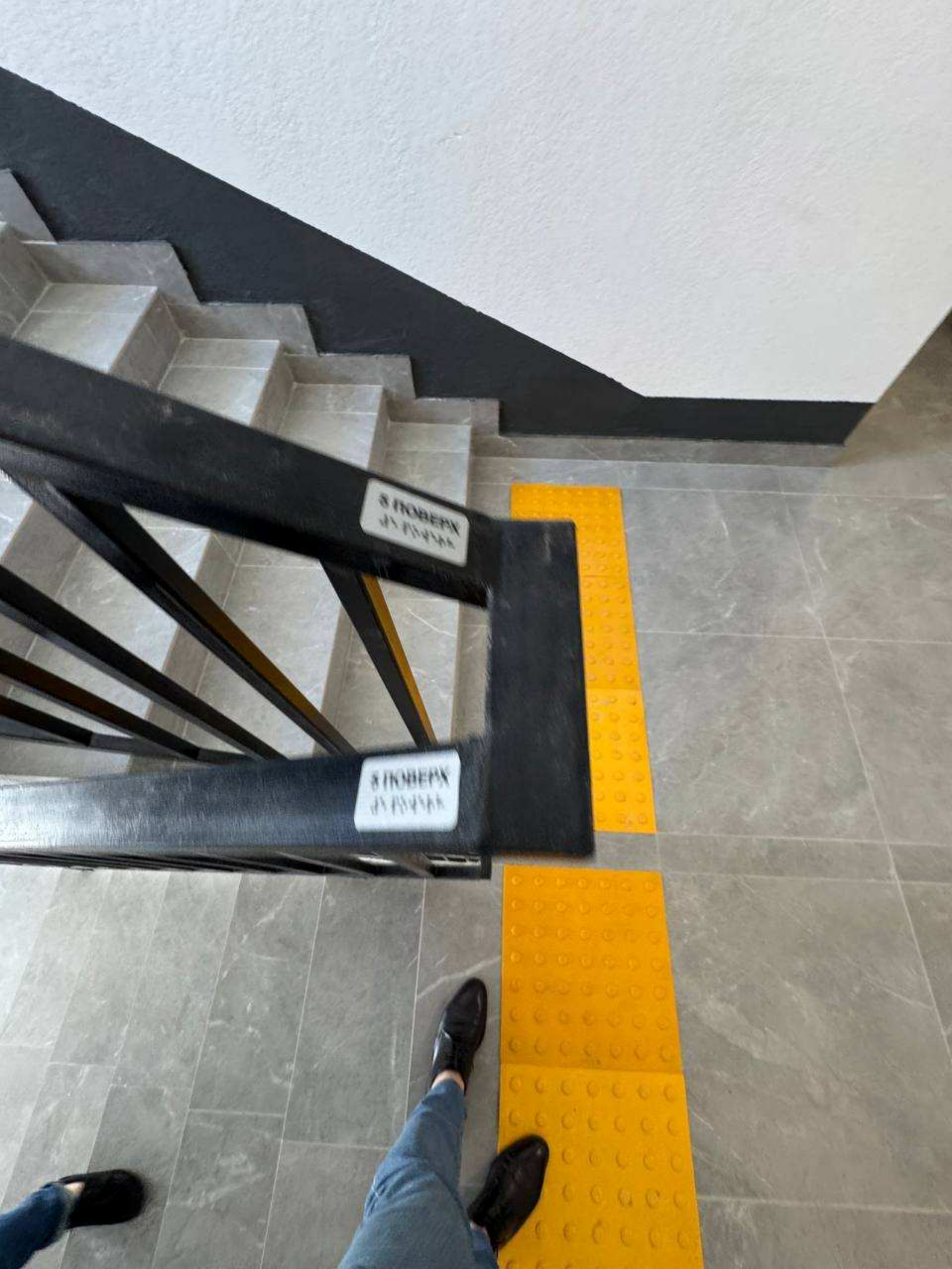












8 ИЮНЯ
1991

8 ИЮНЯ
1991

















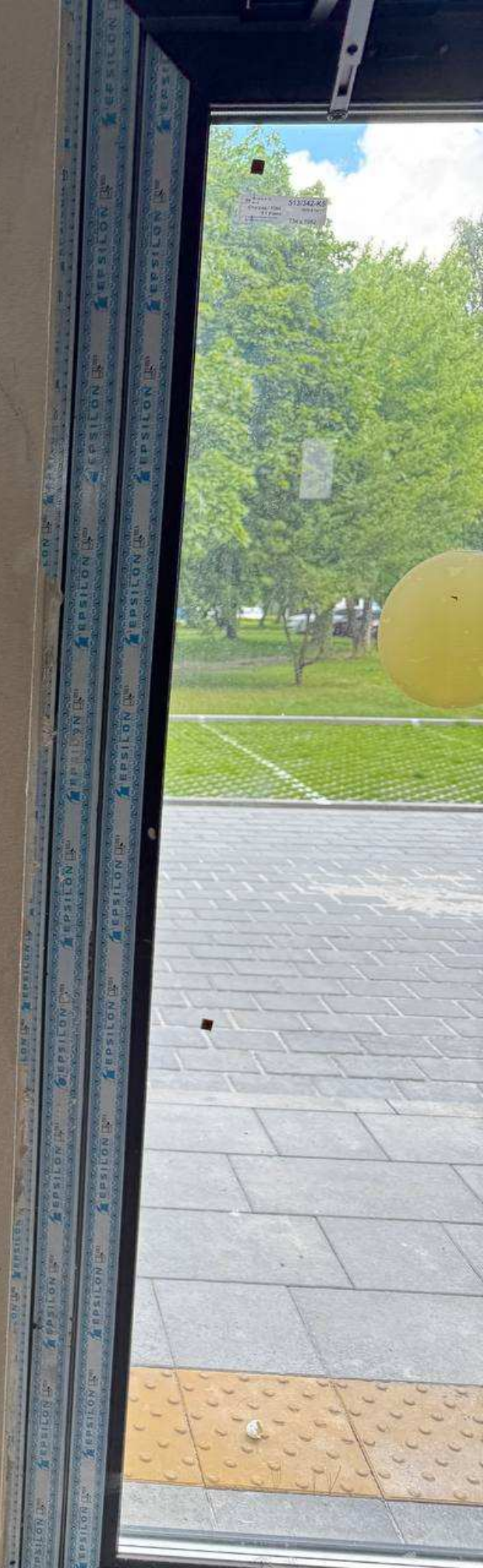
YEBBON





ВИХІД
EXIT





512-542-8282
TMA 1000







ОМЕГА



● Перебачи ПЦС

- Нестраєність
- Сист. помилка
- Відключення
- Діагностика

▲ ВНИЗ СКИДАННЯ
▼ ВІДКЛ. ВІД

- Відкл. / Нестрає. ПЦС
- Відкл. / Нестрає. Оповіщення
- Затримка виходу

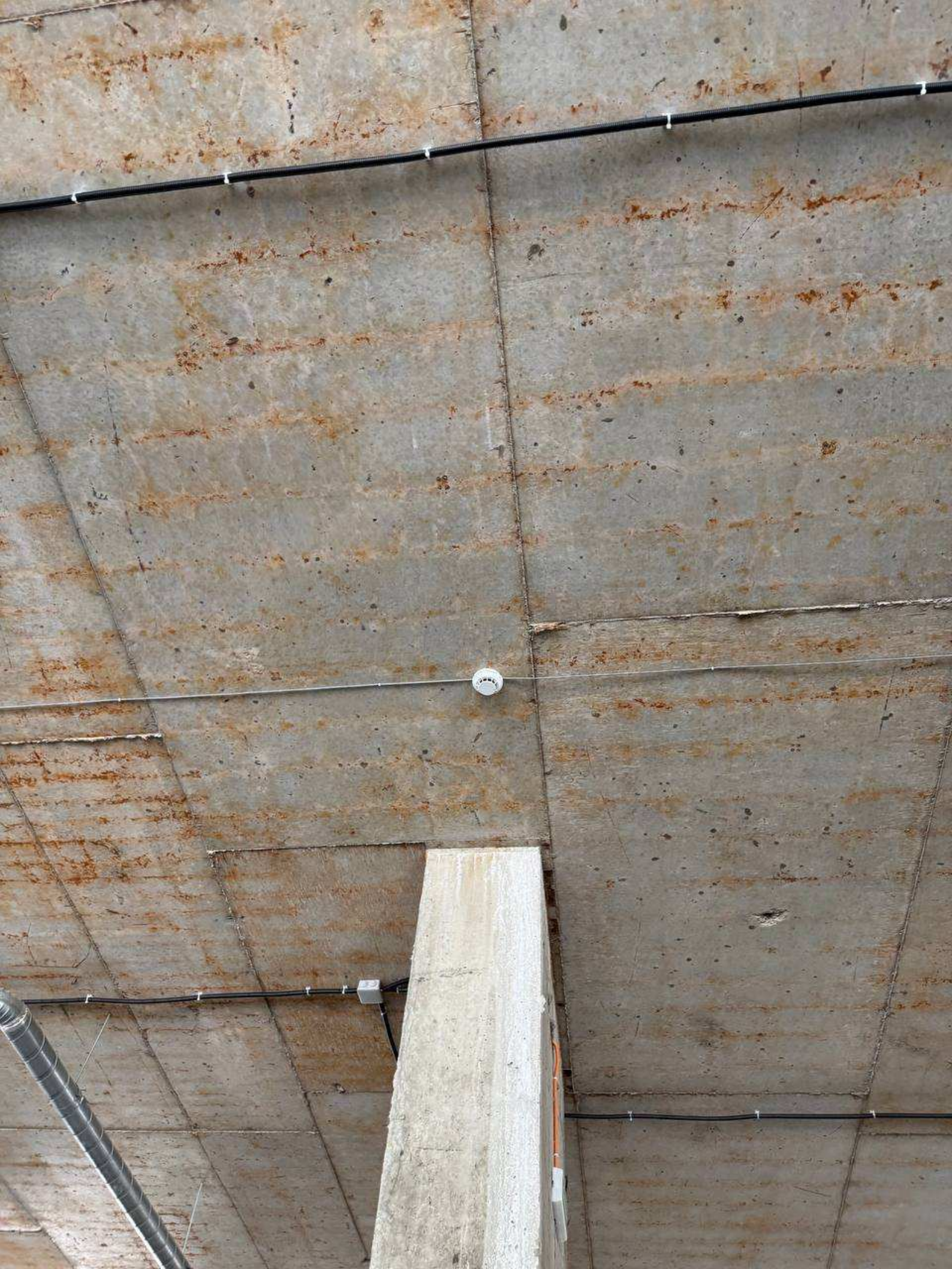
ЗДУК ВИМОГТИ
АКТИВАЦІЯ ВИХОДУ

● Живлення



Прилад управління ПУ-П

Лин. № 20000 Серія № 2000





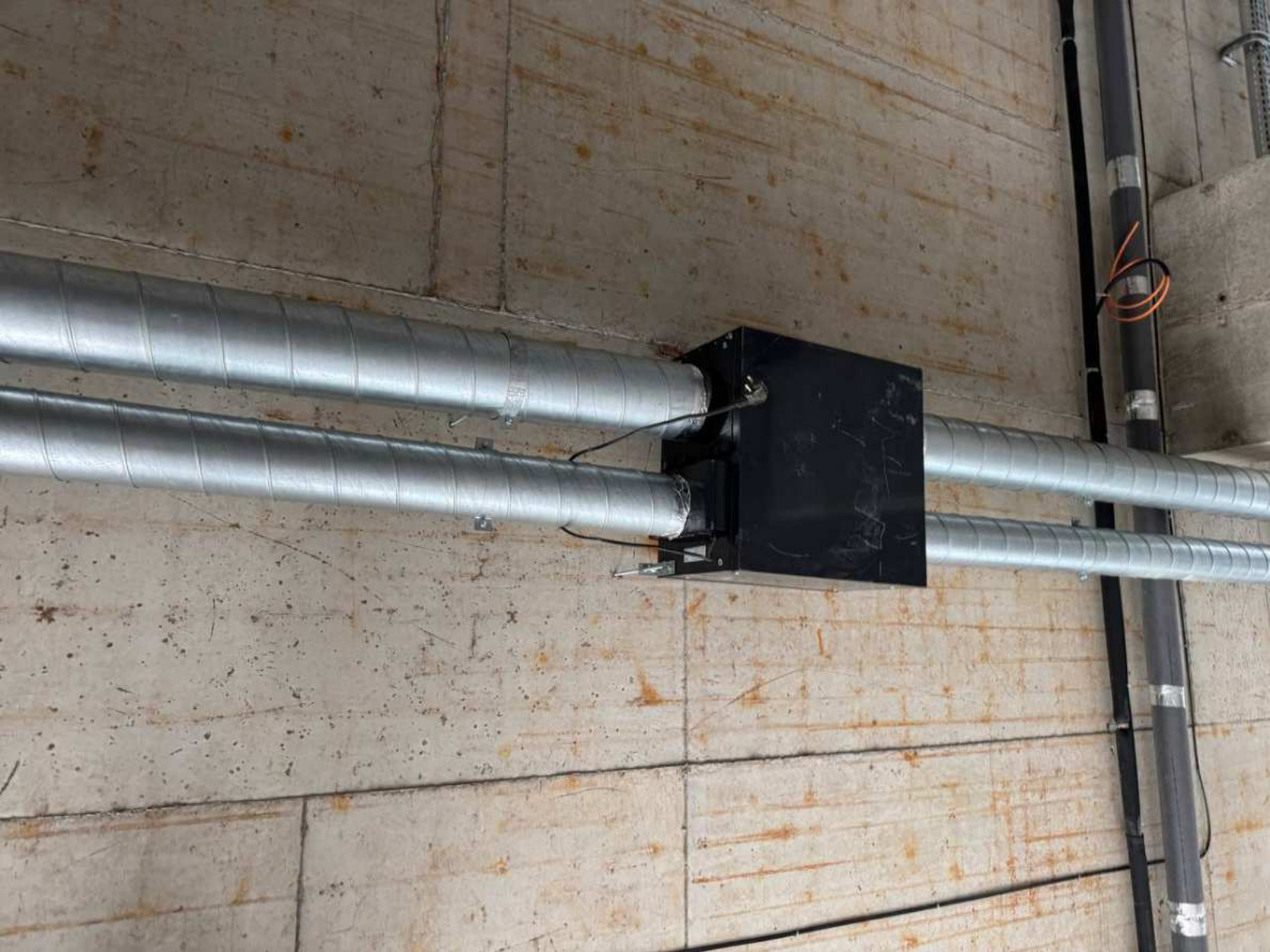


ВИХІД





















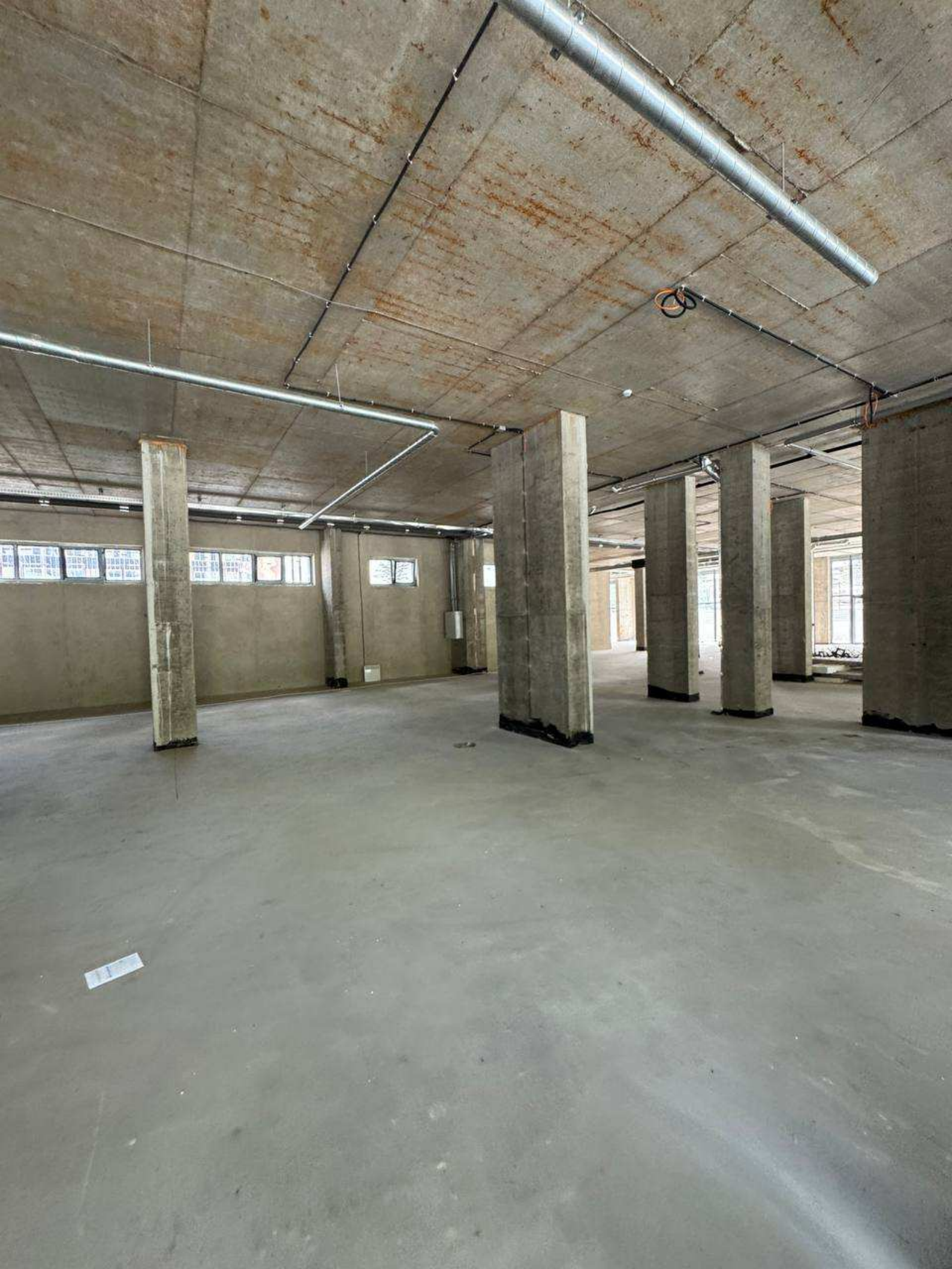




+1.00
▽









ПУСК
НАСОСА





ПУСК
НАСОСА

ТОВ "Пожтехнік"











ПУСК
НАСОСА

7
18
5

5-51-20-KP1













ПУСК
НАСОСА

728 ПИОНЕР

S























ВИХІД









ВИХІД

313343-81
Сторона: ліва
3.7.2008
720 x 1000





ВИХІД





ПУСК
НАСОС









ПУСК
НАСОСА

СОБ. ПОЖЕЛ.





ВИХІД

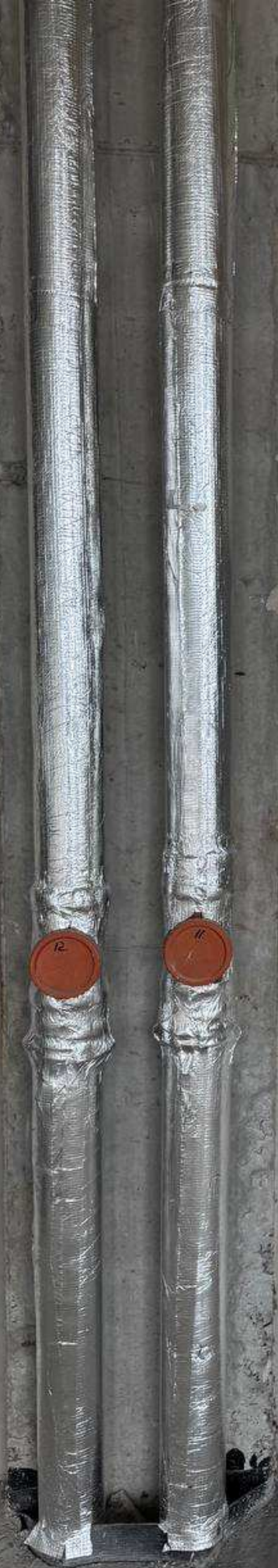
СЕРВІС





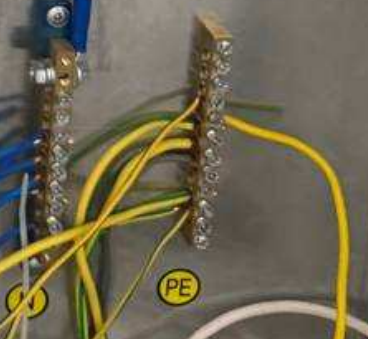
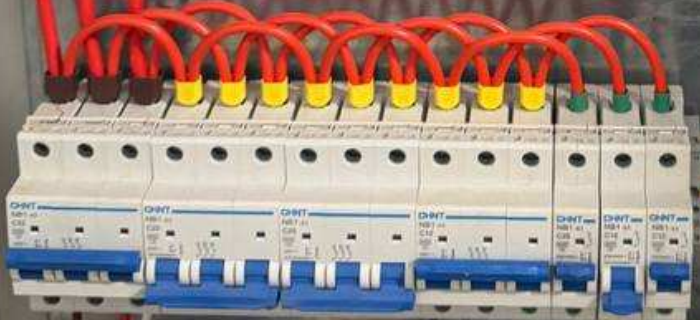




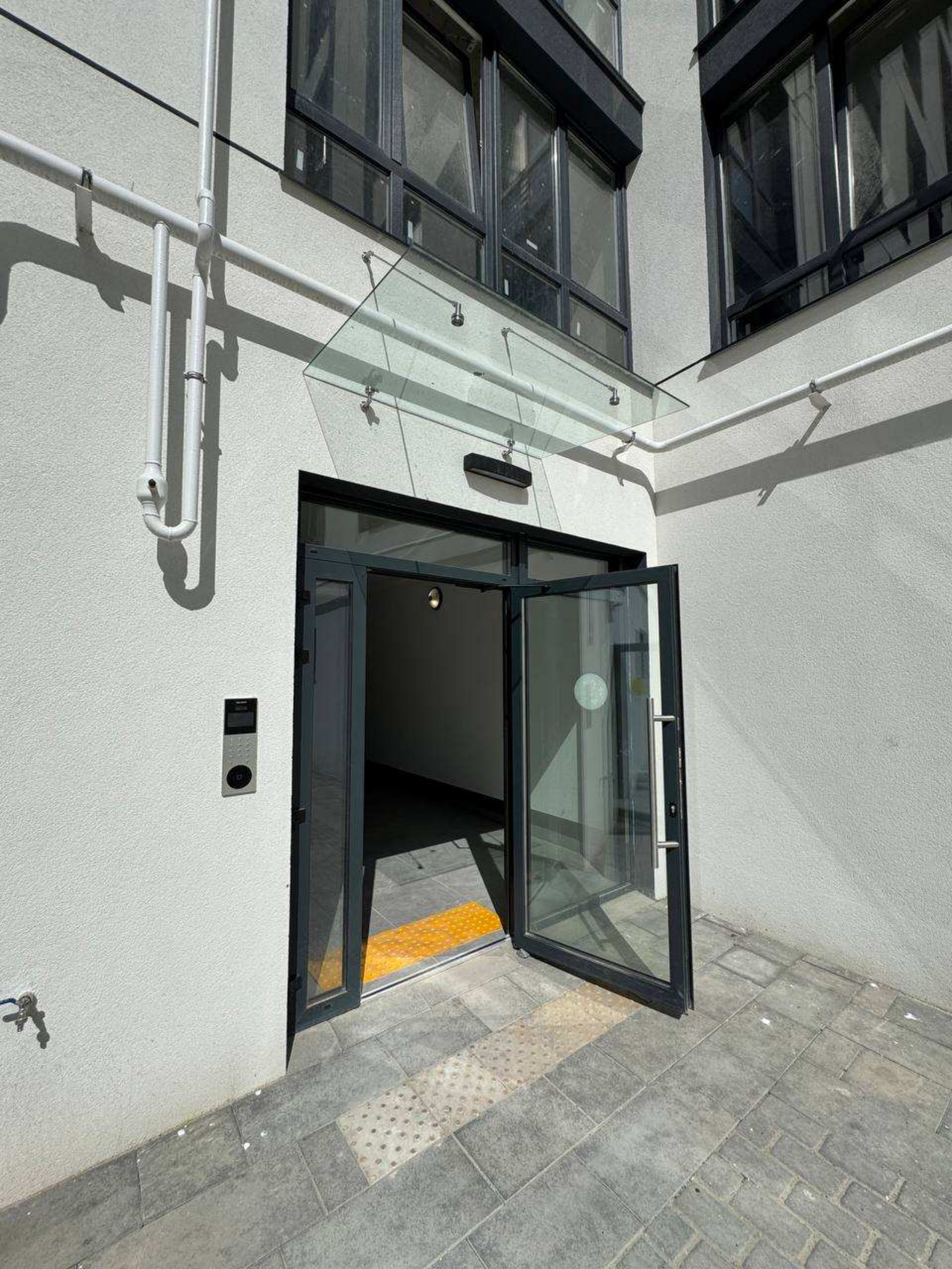




ЩОС-4











M1000 (60)
00000
m³
APATOR
M1000
+0.01
+0.001
+0.0001

















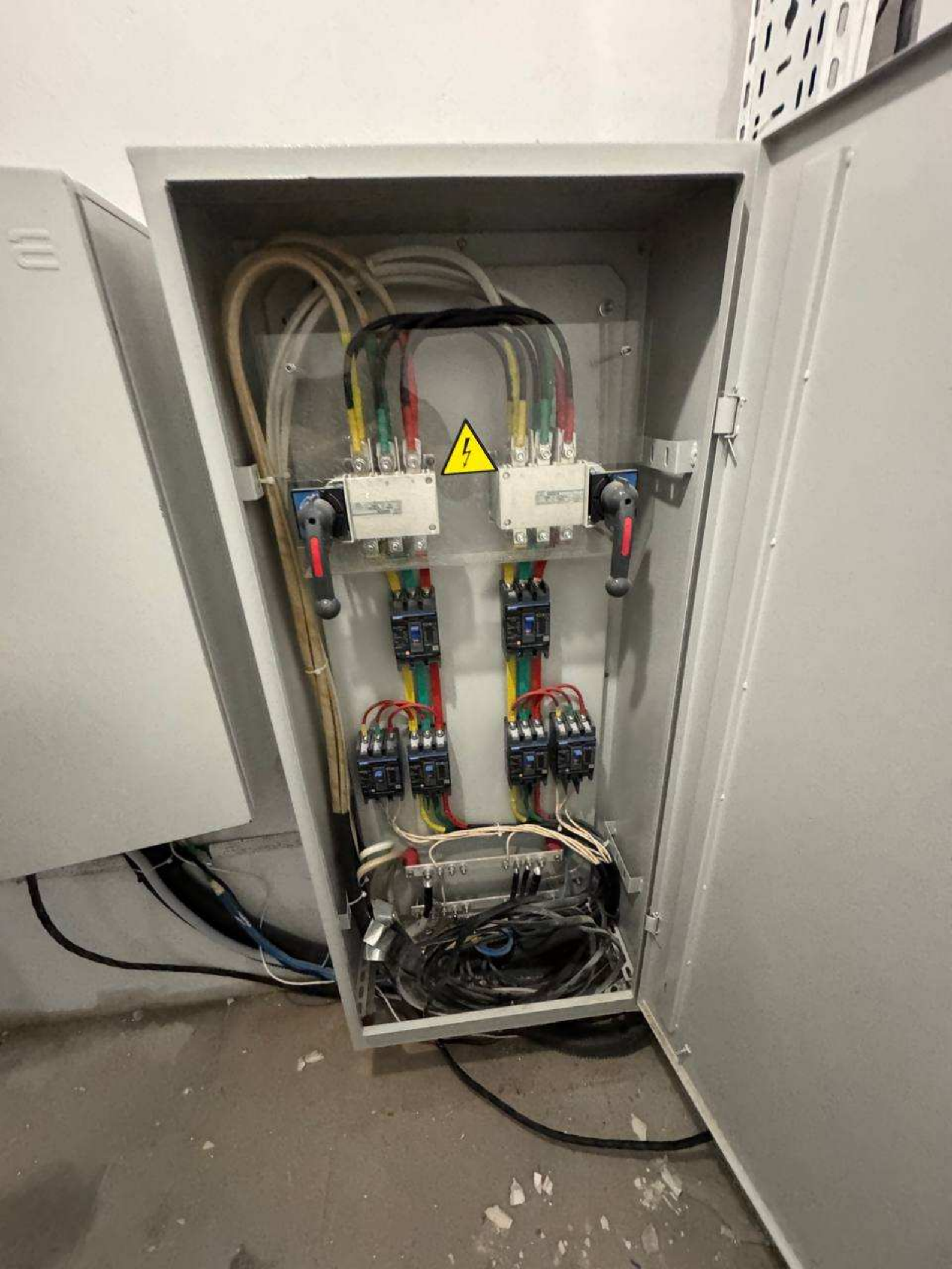






4002



















NIK

6400 imp/kWh
NIK 2104 AP2...

NIK 2104 AP2T.1802.MC.11 ①



220 V 5(60) A 50 Hz



PLC



20711028

Вироблено в Україні

2024



ВРП7-4



Two main circuit breakers (MCBs) are mounted at the top of the panel. Each breaker has a red handle and is connected to three phase conductors (yellow, green, red) and a neutral conductor (blue). The breakers are labeled with technical specifications.

A single-pole thermal magnetic switch (TMS) is mounted in the middle section, connected to the three phase conductors.

A second single-pole thermal magnetic switch (TMS) is mounted in the middle section, connected to the three phase conductors.

Two double-pole thermal magnetic switches (TMS) are mounted in the lower middle section, connected to the three phase conductors.

Two double-pole thermal magnetic switches (TMS) are mounted in the lower middle section, connected to the three phase conductors.

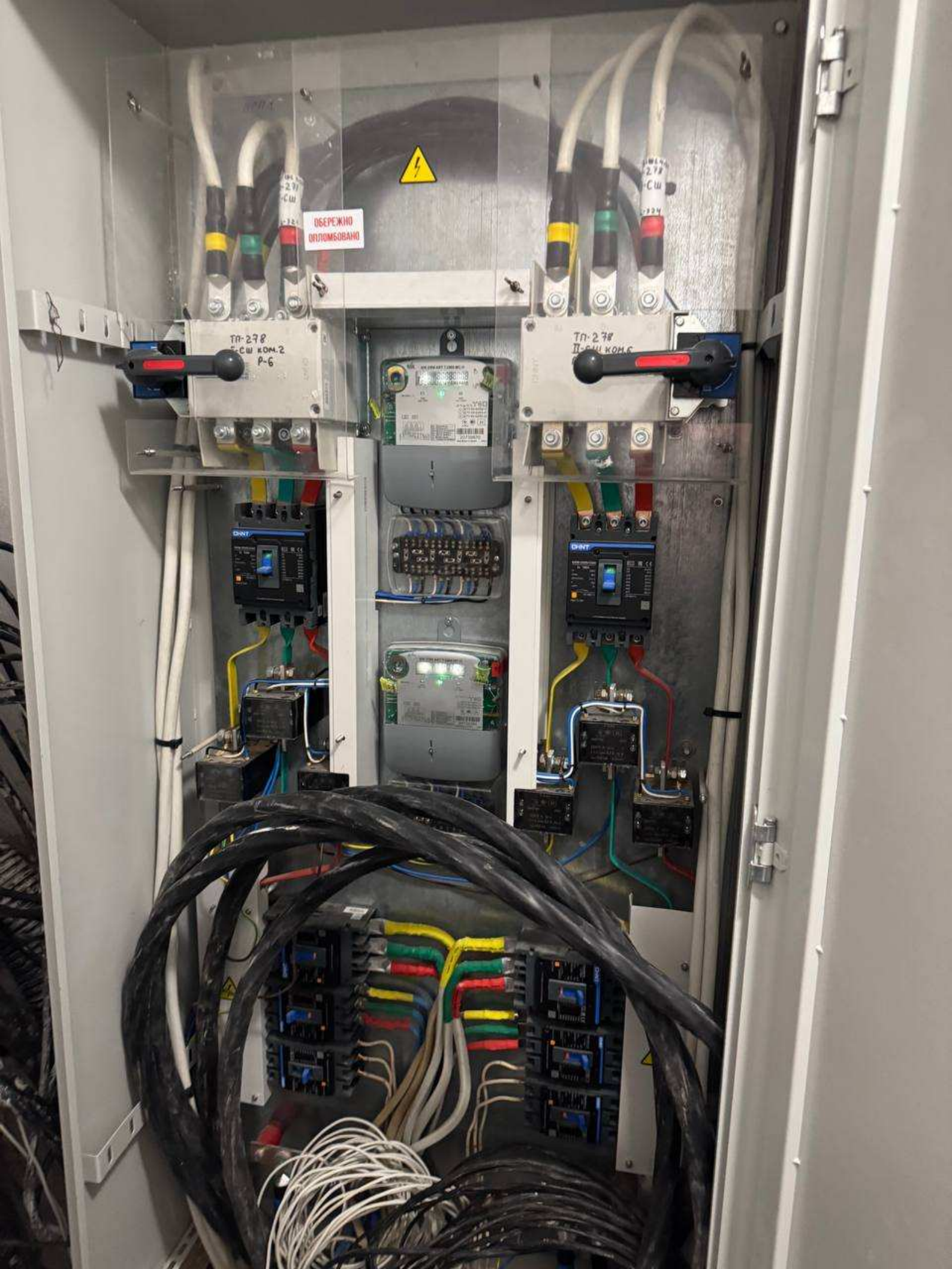
A terminal block with six screw terminals is used for connecting the phase and neutral conductors from the switches.

A second terminal block with six screw terminals is used for connecting the phase and neutral conductors from the switches.

A bundle of various colored wires (yellow, green, red, blue, black) is organized at the bottom of the panel, connected to the terminal blocks.

A small white electrical box with a yellow lightning bolt warning symbol is mounted on the wall to the left of the main panel.

A bundle of white and black cables is bundled together and runs vertically along the left side of the panel.



ОБЕРЕЖИНО
ВПЛОМБОВАНО

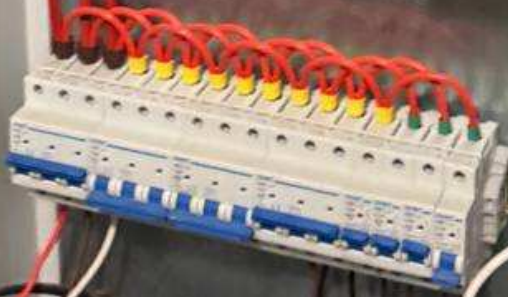
ТН-278
П-ВШ КОМ.С
Р-6

ТН-278
П-ВШ КОМ.С

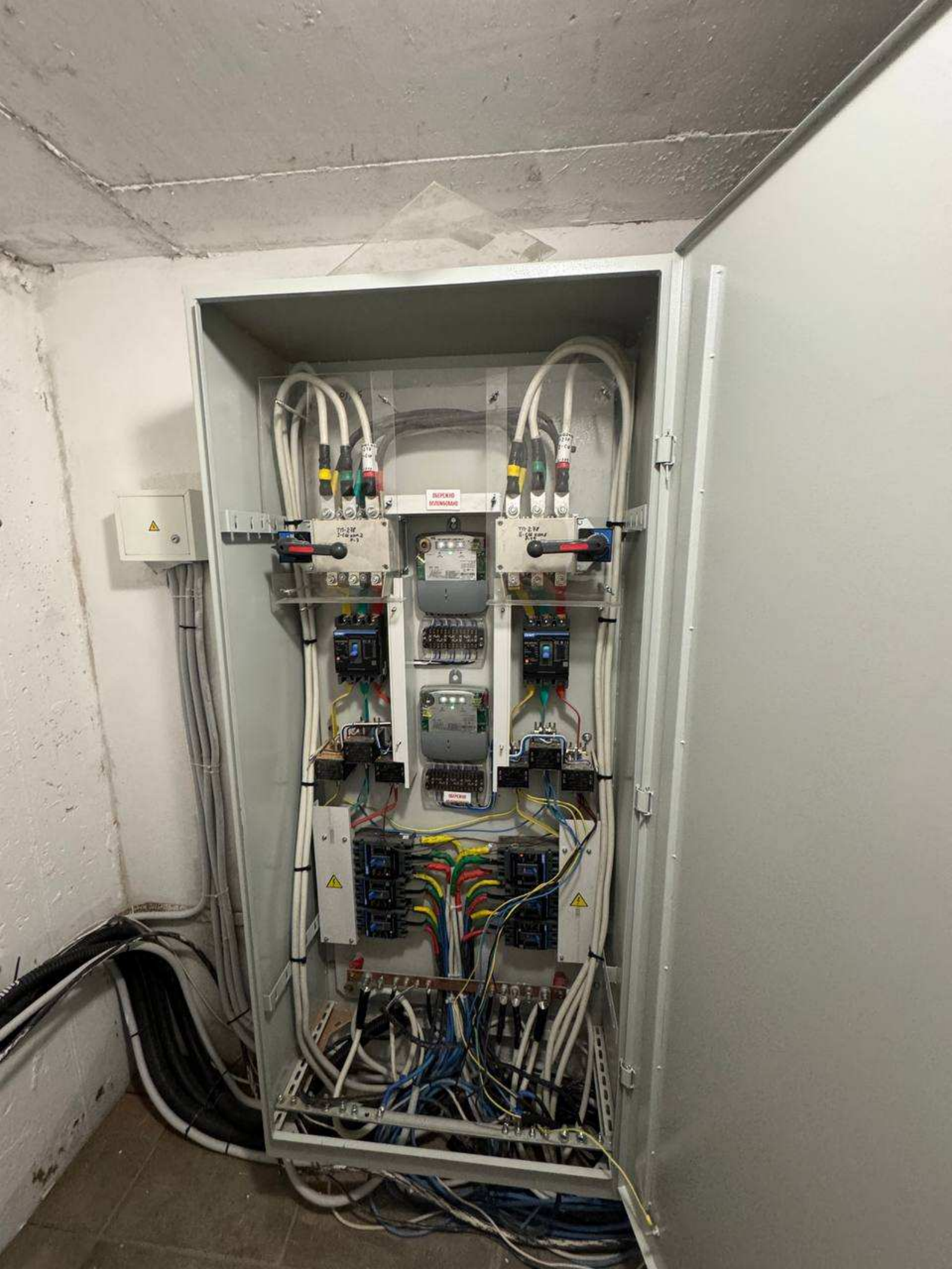


ЩОС-1

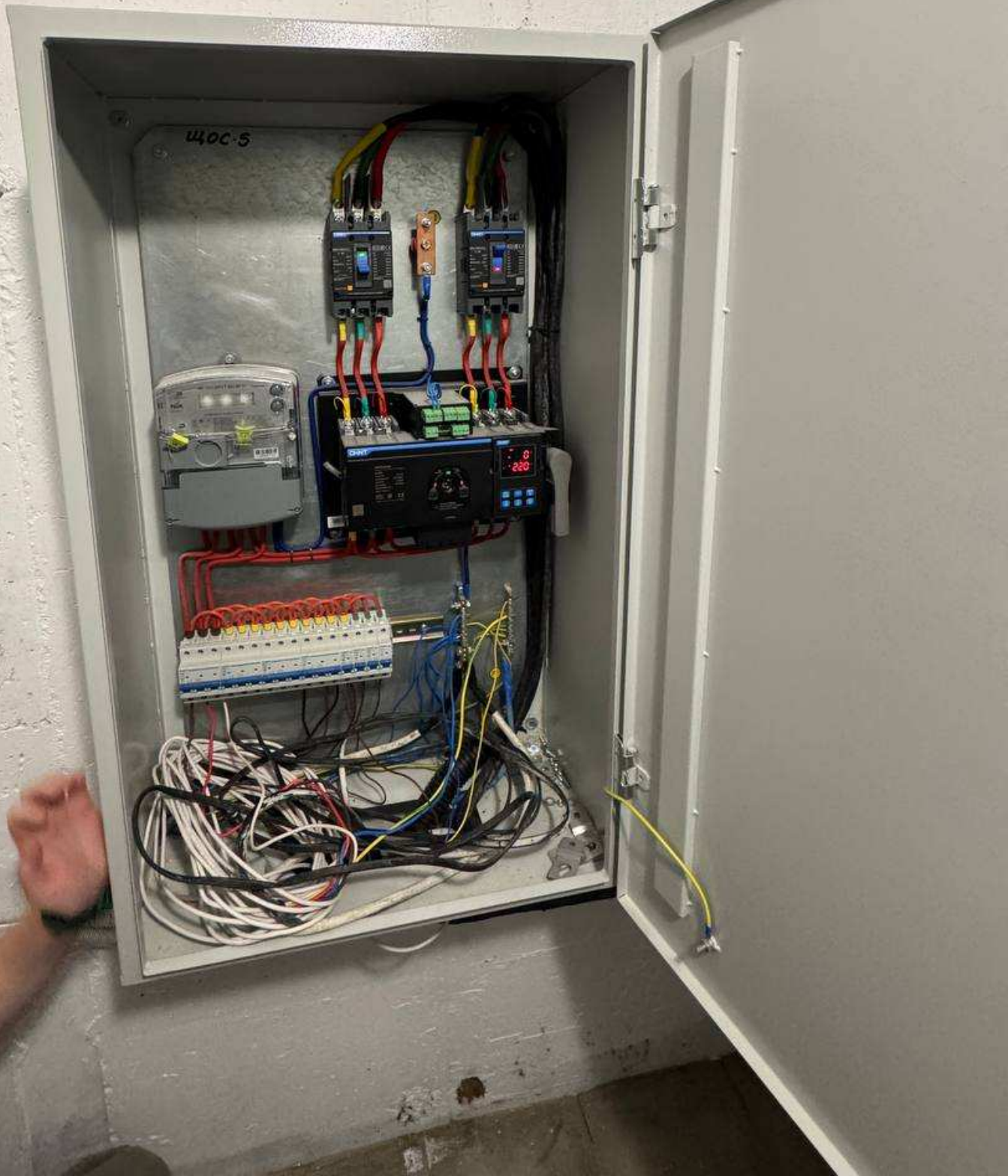
W

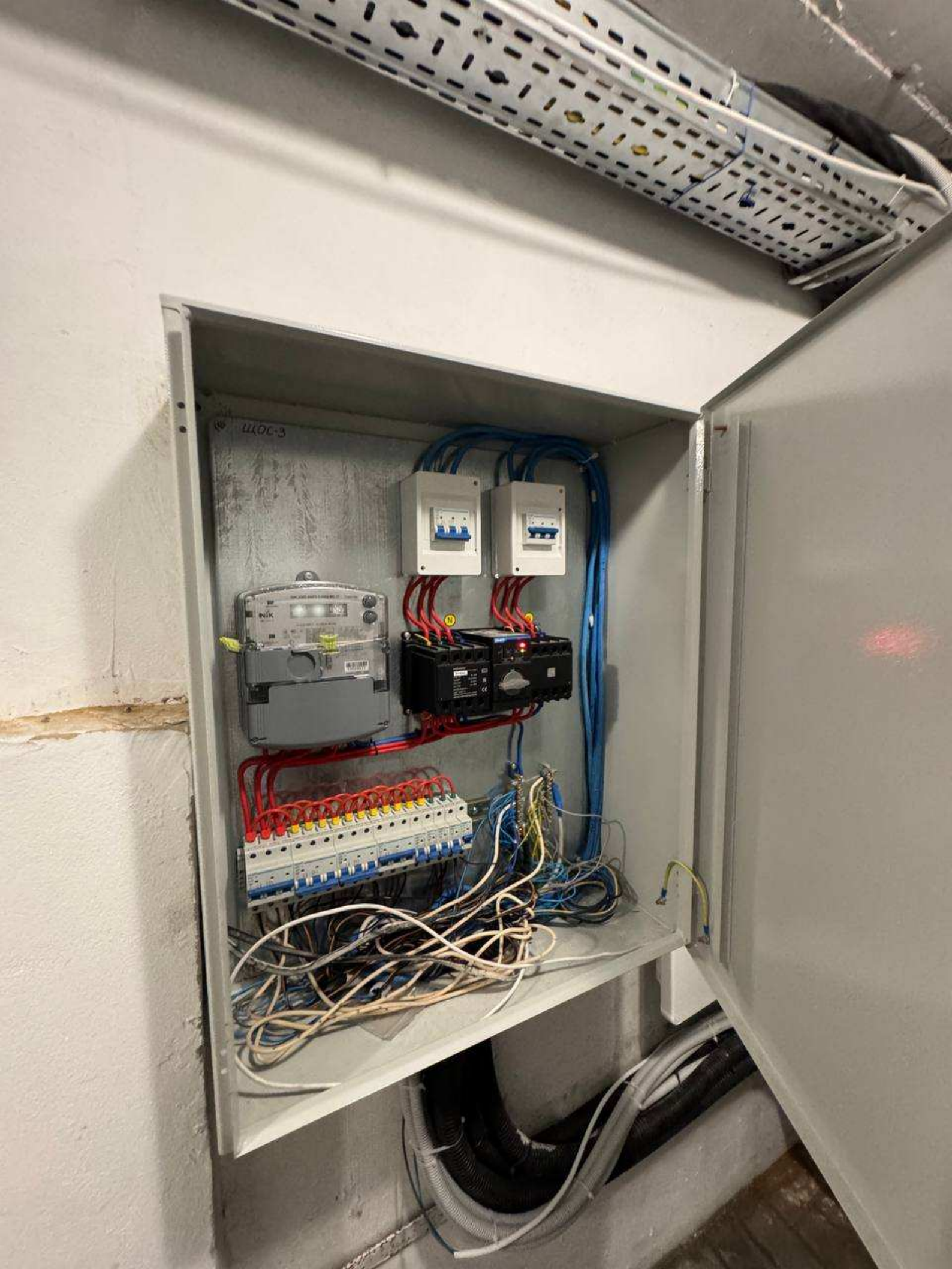








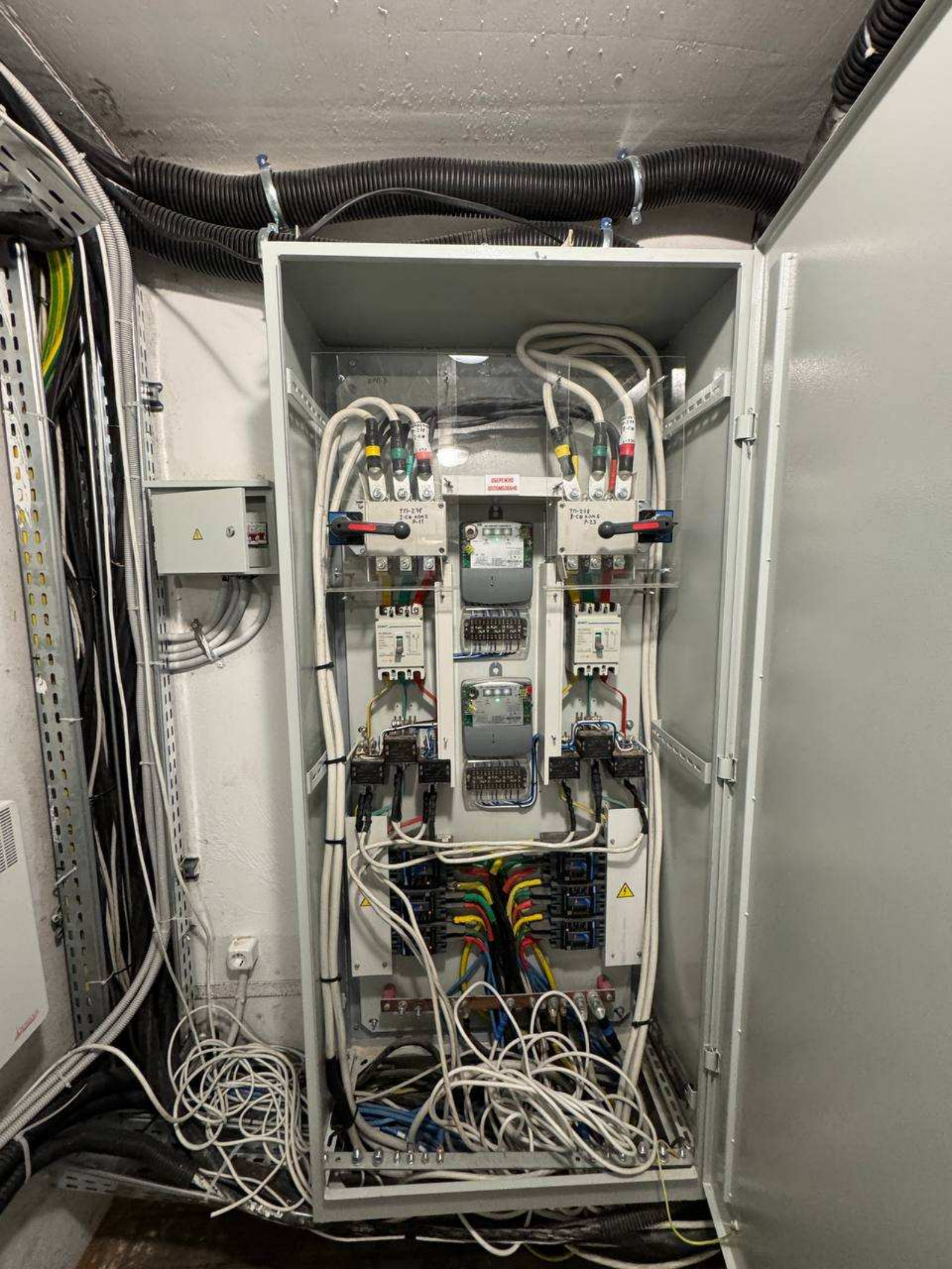




ЩОС-3

nik

1000VA







УВАГА! ОПЛОМБОВАНО

G10
12 M AMG10 280
metrix
Qmax=16m³/h
Qmin=0.1m³/h
1imp @ 0.01m³
Y495-09

48733173 m³

Nr 00291734 2012

707086

metrix
ВІСІМЬ ЛІТ

С нами економить одразу!

- економія денег - окупає себе за 3-9 місяців
- мінімальна погрешність і чудовий
- самий довгий гарантійний термін
- термін служби не менше 25 років

www.metrix.ua



ISO 9001:2001
ISO 14001



Вернуто
в 2012