



ВОГНЕБЕЗПЕЧНО  
ГАЗ  
EMERGENCY GAS  
104



ВОГНЕБЕЗПЕЧНО  
ГАЗ  
EMERGENCY GAS  
104



ВОГНЕБЕЗПЕЧНО  
ГАЗ  
EMERGENCY GAS  
104



ВОГНЕБЕЗПЕЧНО  
ГАЗ  
EMERGENCY GAS  
104



ВОГНЕБЕЗПЕЧНО  
ГАЗ  
EMERGENCY GAS  
104











ПРОДАМ  
Тел: 508 13 12



ПРЕДУПРЕЖДЕНИЕ  
ГАЗ  
ПРЕДУПРЕЖДЕНИЕ  
С 124



ПРЕДУПРЕЖДЕНИЕ  
ГАЗ  
ПРЕДУПРЕЖДЕНИЕ  
С 124



ПРЕДУПРЕЖДЕНИЕ  
ГАЗ  
ПРЕДУПРЕЖДЕНИЕ  
С 124



ПРЕДУПРЕЖДЕНИЕ  
ГАЗ  
ПРЕДУПРЕЖДЕНИЕ  
С 124



ПРЕДУПРЕЖДЕНИЕ  
ГАЗ  
ПРЕДУПРЕЖДЕНИЕ  
С 124



ПРЕДУПРЕЖДЕНИЕ  
ГАЗ  
ПРЕДУПРЕЖДЕНИЕ  
С 124



ПРЕДУПРЕЖДЕНИЕ  
ГАЗ  
ПРЕДУПРЕЖДЕНИЕ  
С 124













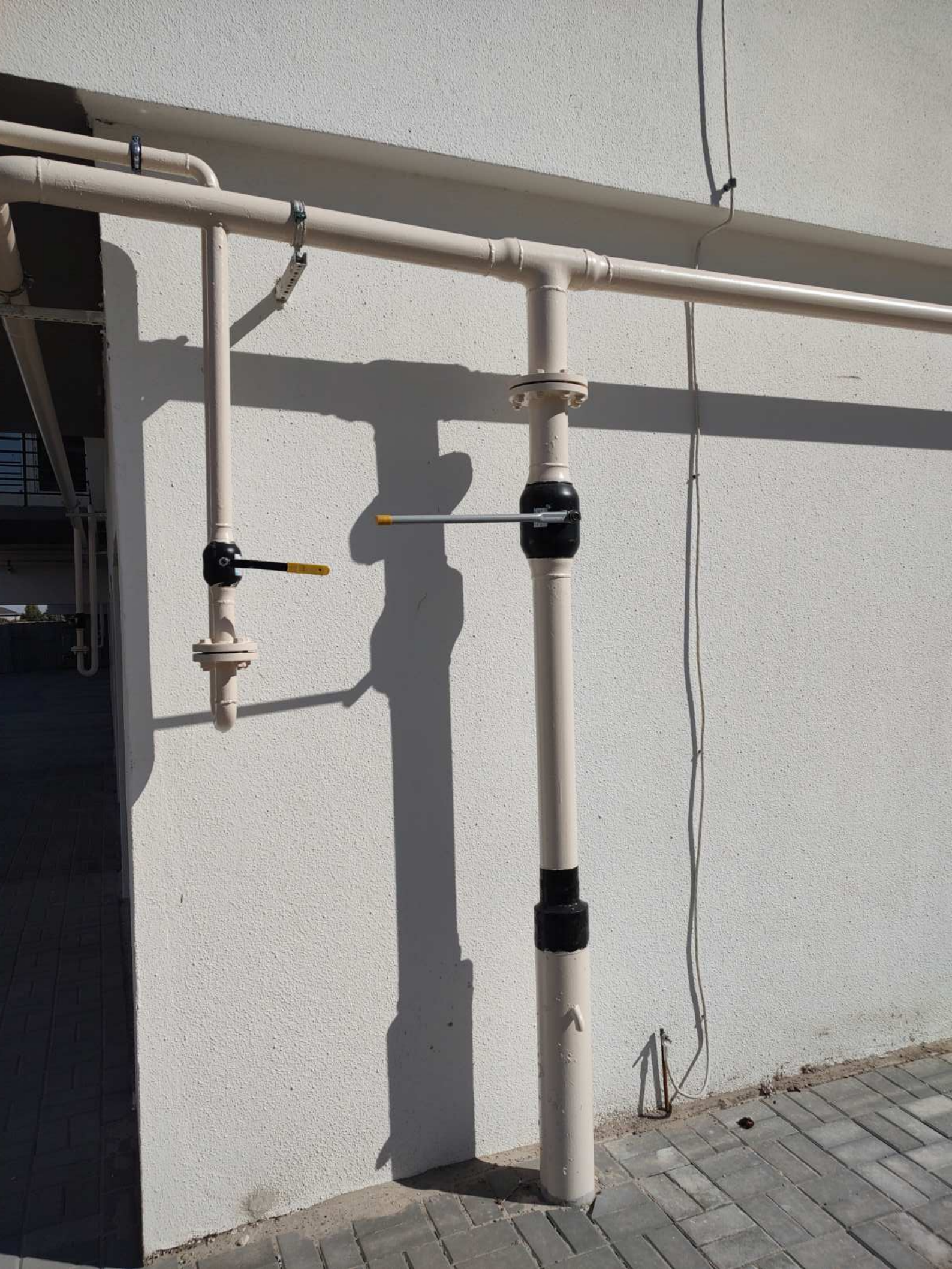


































→  
ВХІД

↑  
ВХОД

←  
ВХОД







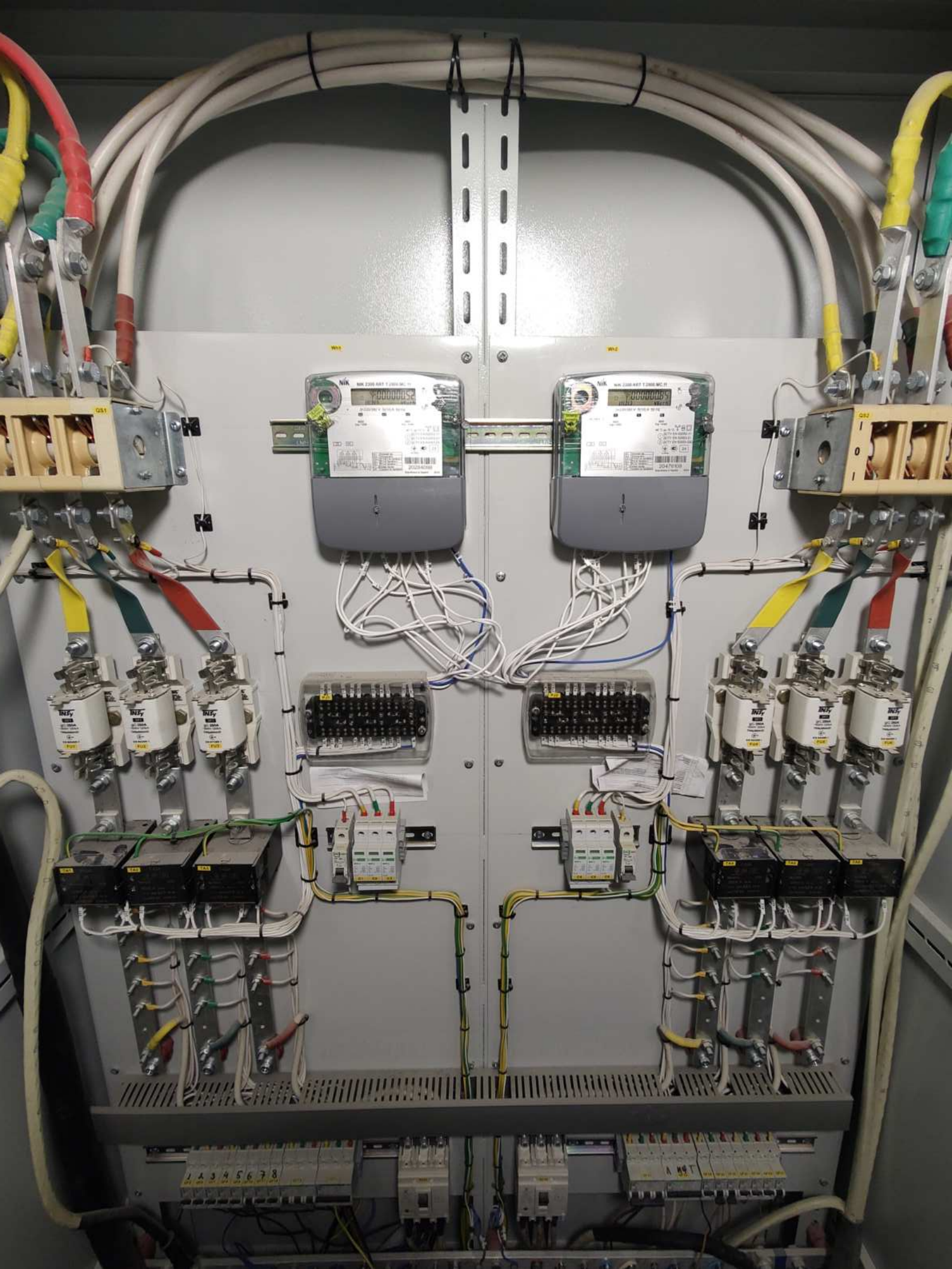














BAPTA 1-03.14

5701







ЛИФТ

1

ПОВЕРХ





BLM Group  
BYVAARTHOCHTBAK

10	9
8	7
6	5
4	3
2	1
Emergency Stop (Green)	Fire Alarm (Red)
5	6
7	8



Nitto

Nitto

Nitto

Nitto

Nitto

Nitto

Nitto

Nitto

Nitto

Nitto

Nitto

FIBERGUARD

FIBERGUARD for Fiber & CO<sub>2</sub> Laser

FIBERGUARD

FIBERGUARD for Fiber & CO<sub>2</sub> Laser

FIBERGUARD

FIBERGUARD for Fiber & CO<sub>2</sub> Laser

FIBERGUARD for Fiber & CO<sub>2</sub> Laser

Handwritten signature in blue ink.

Handwritten red markings.

Handwritten notes in blue ink on the protective film.

























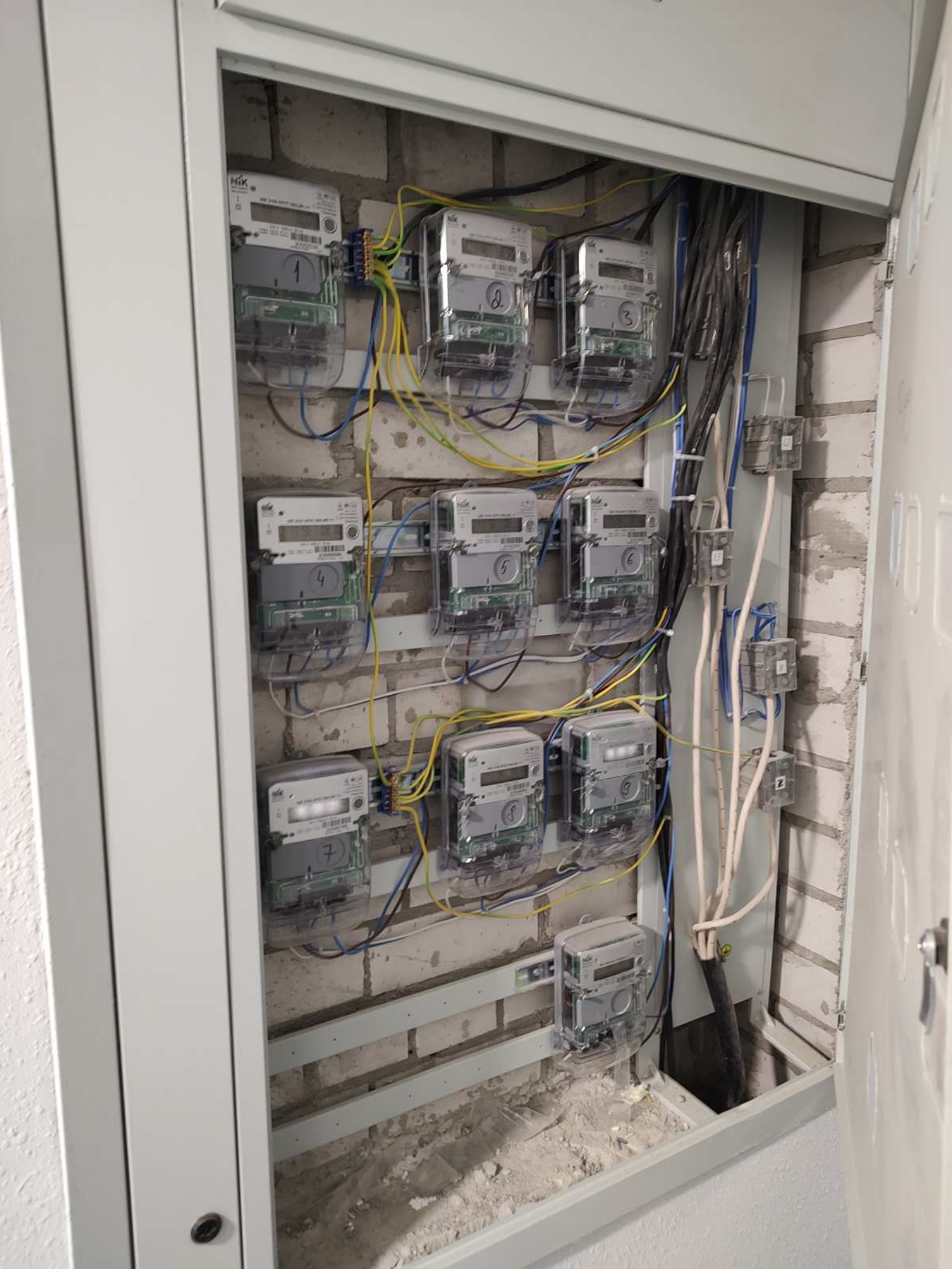














89

88

87

86

90

BRASS









A white rectangular water heater unit is mounted on a grey concrete wall. It features a red label with the number '3301325' and some technical specifications. A white pipe is connected to the top of the unit, and electrical wires are visible on the side.

A window with a grey frame and multiple panes. The window is set into a brick wall. The view outside shows a modern building with balconies and a clear blue sky. The window frame has 'WDS' branding repeated along the edges.

A cardboard box with the number '3301325' and 'ETP' printed on it. The box is positioned on the floor next to the water heater. It appears to be a manufacturer's box for the water heater.



























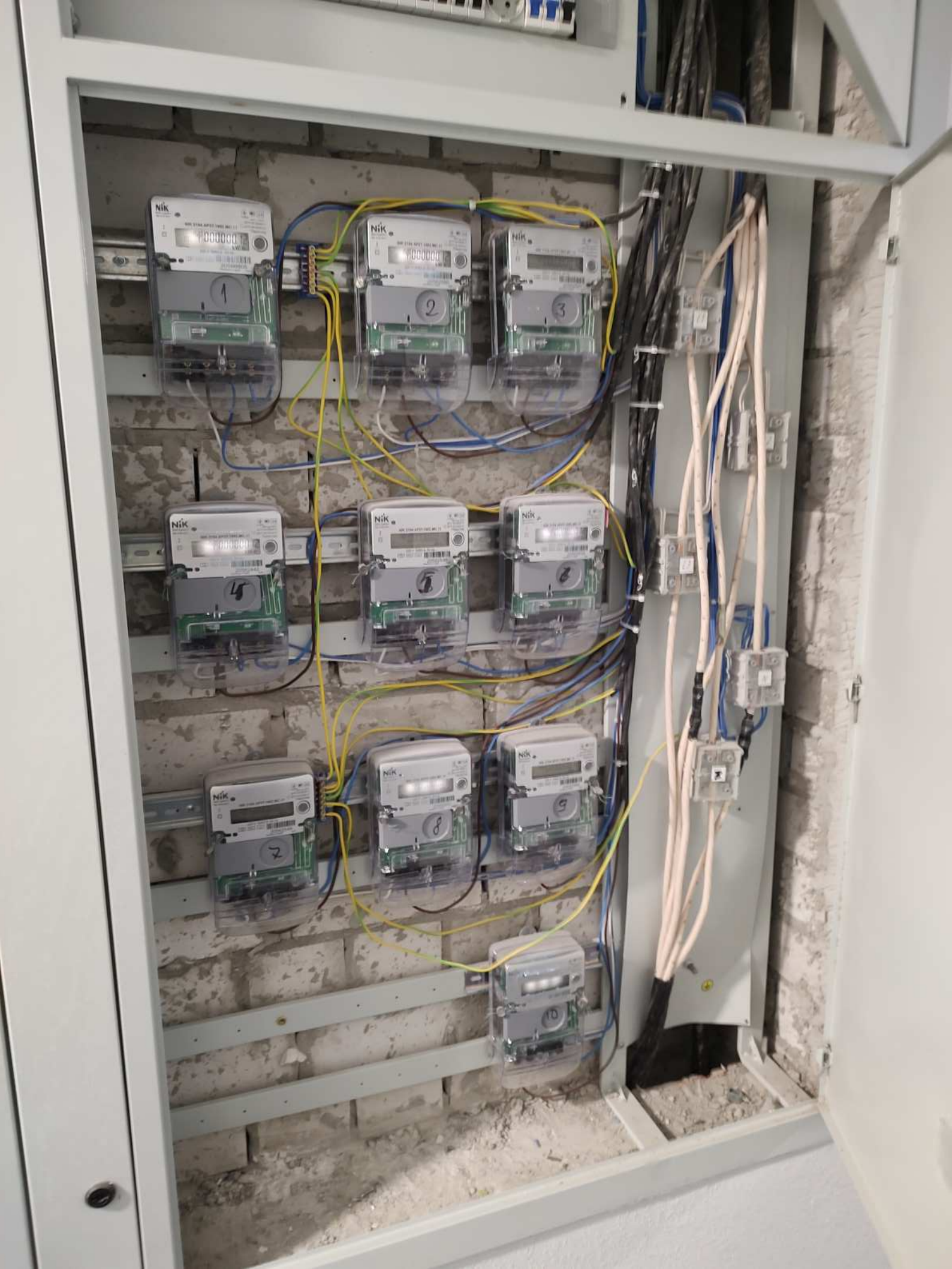








9  
ПОВЕРХ









**8**  
**ПОВЕРХ**































3301325  
ARISTON  
ETP











7  
ПОБЕД





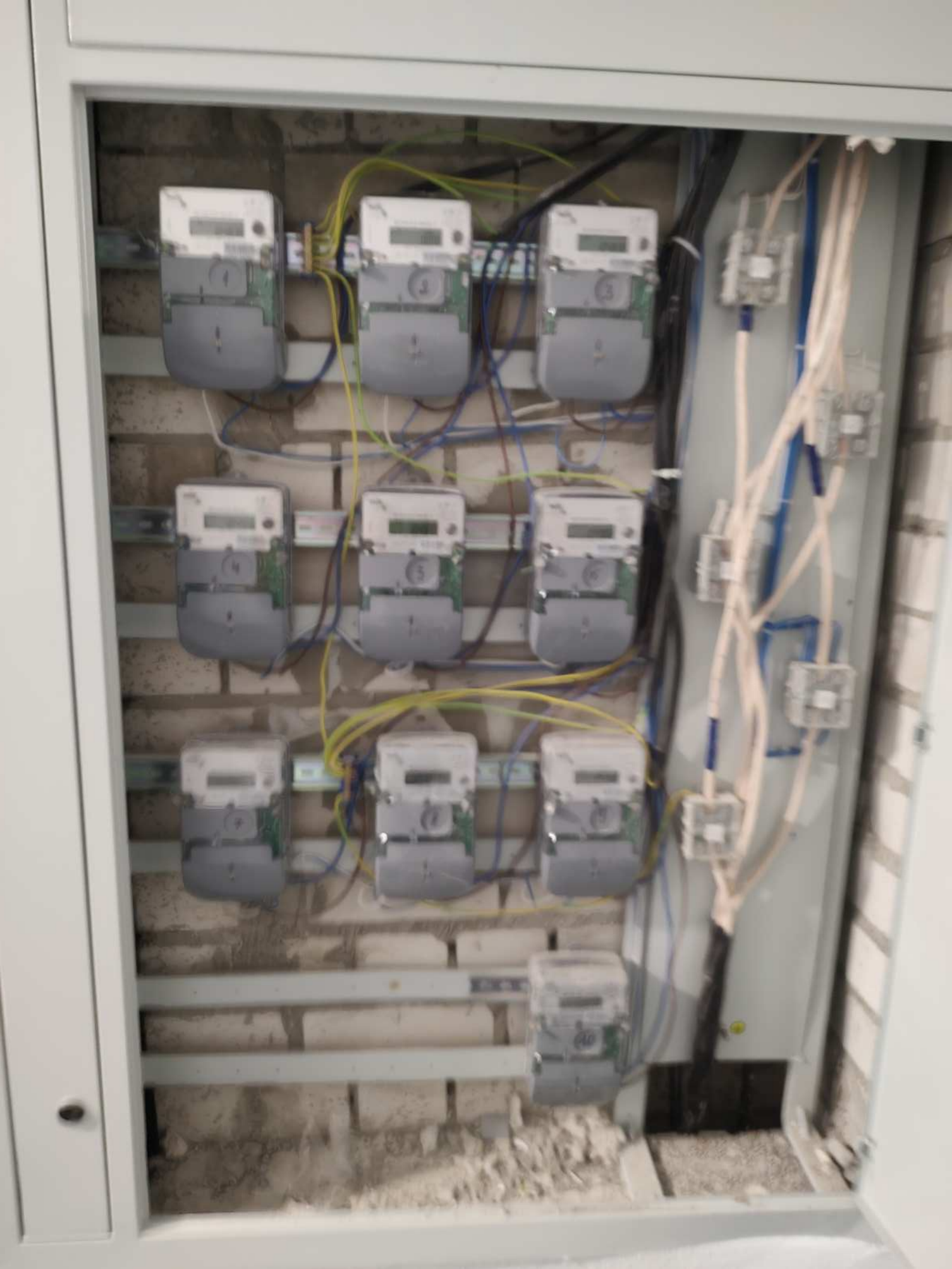








6  
ПОВЕРХ





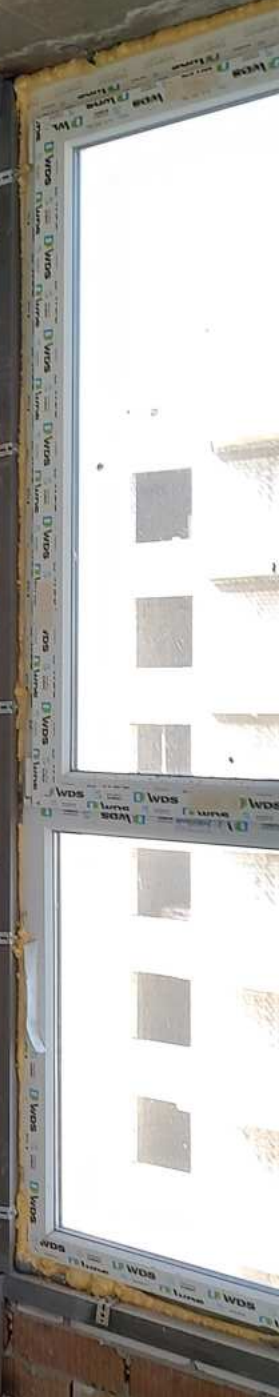




Information on the boiler's front panel:

- Energy Label:** A large label showing energy efficiency ratings (A to G) and a QR code.
- Technical Specifications:** A smaller label with technical details, including a QR code and the number "23".
- Control Panel:** A digital display and several buttons for manual operation.
- Manufacturer Logo:** A logo for the manufacturer, likely Bosch, is visible at the bottom left of the panel.



















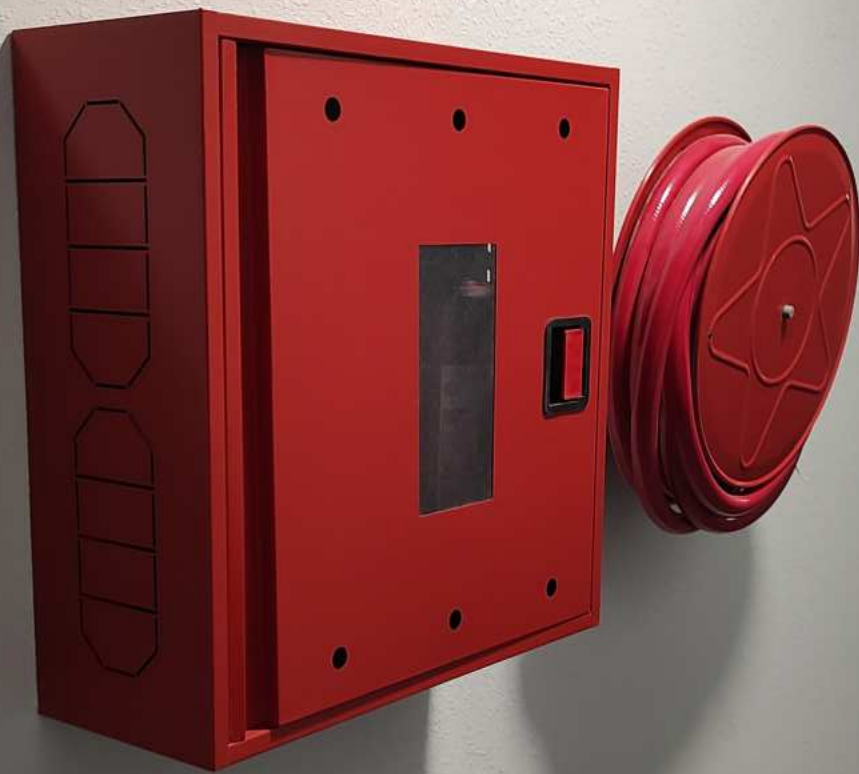


















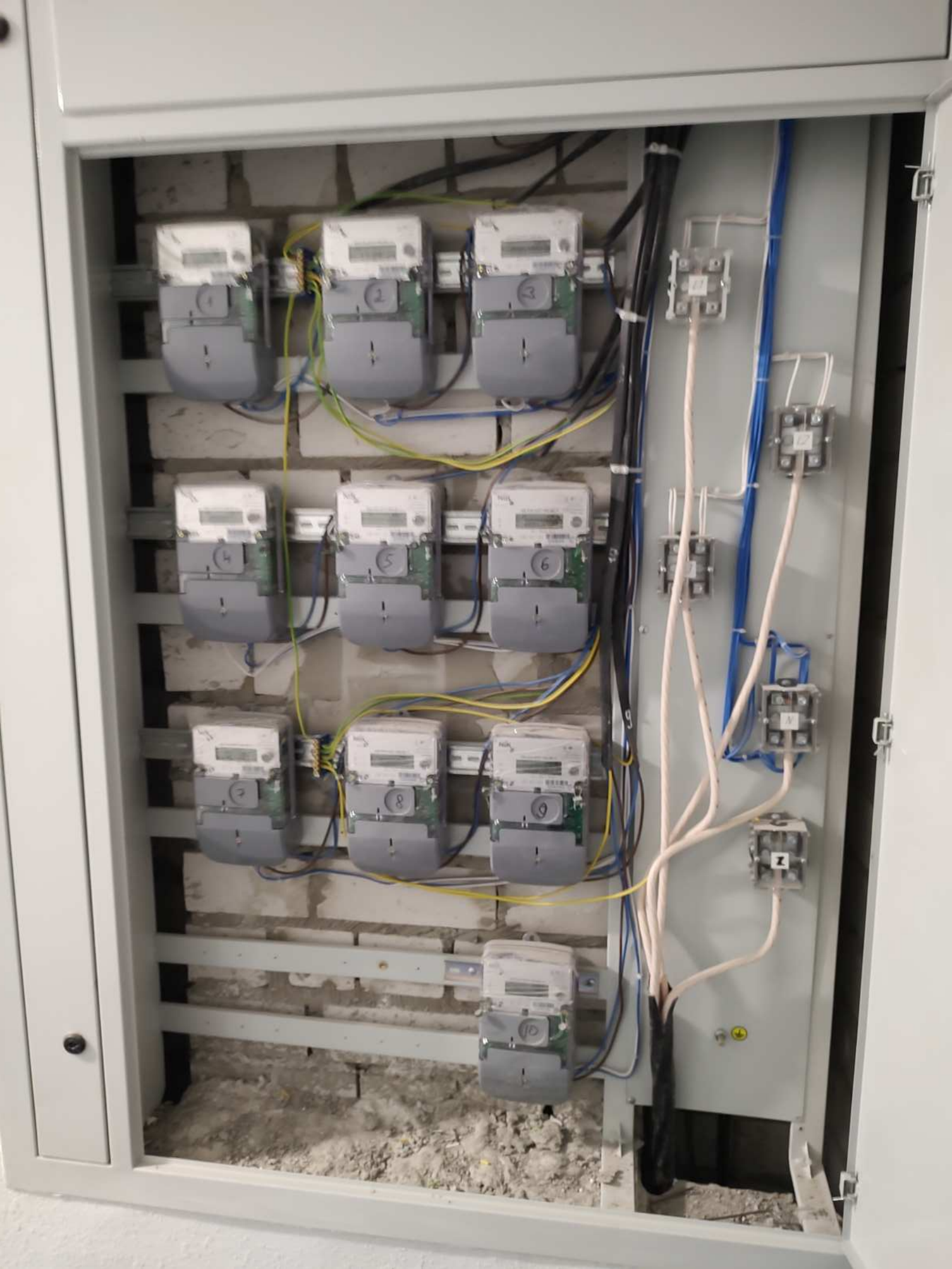
5  
ПОВЕРХ















A white wall-mounted boiler unit with a red and white label on its front panel. It is connected to a white PVC pipe that exits through the brick wall above it. The boiler is mounted on a wall of red bricks.

A network of pipes including a black gas pipe at the top, a grey electrical meter on the left wall, and a red pipe running horizontally across the wall. A black cable is also visible running from the boiler area towards the left wall.

A large window with a silver frame and multiple panes. The window is set into a brick wall. The view outside shows a multi-story apartment building with many windows and balconies under a clear blue sky. The window frame has 'WDS' branding.

A large, brown cardboard box standing upright on the floor. It features a circular logo with a stylized 'H' and some text on its side. The box appears to be for a heavy-duty appliance or equipment.





























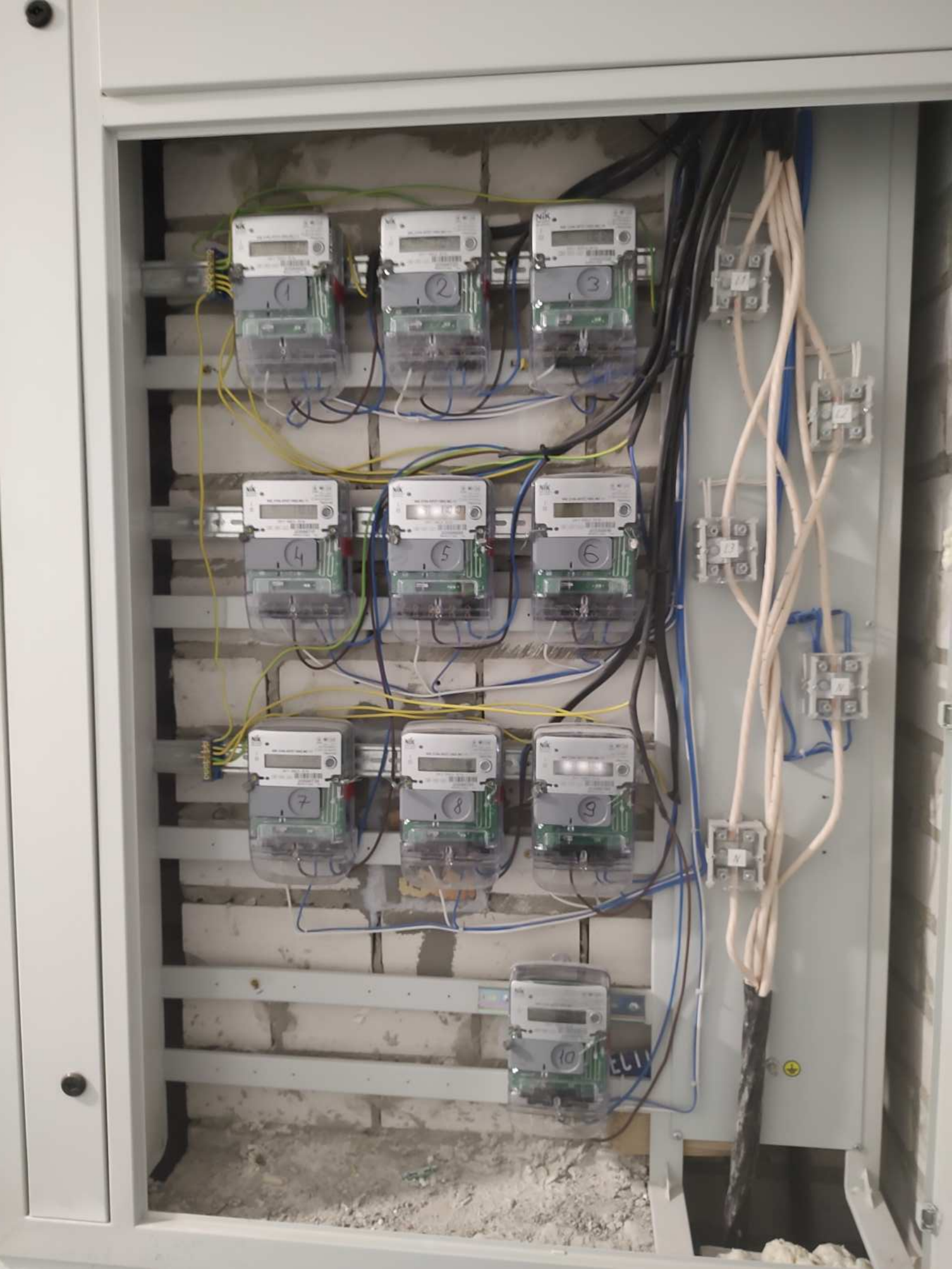


























The image shows a white wall-mounted boiler unit. To its left, a grey electrical control box is mounted on the wall. A red copper piping system runs horizontally across the wall, with a vertical section connecting to the boiler. A white PVC vent pipe extends from the boiler to the ceiling. The boiler has a control panel with a red display and various buttons. The room has a brick wall on the right and a window with a white frame and yellow insulation. A cardboard box is on the floor in the foreground.















**1**  
ПОВЕРХ



