



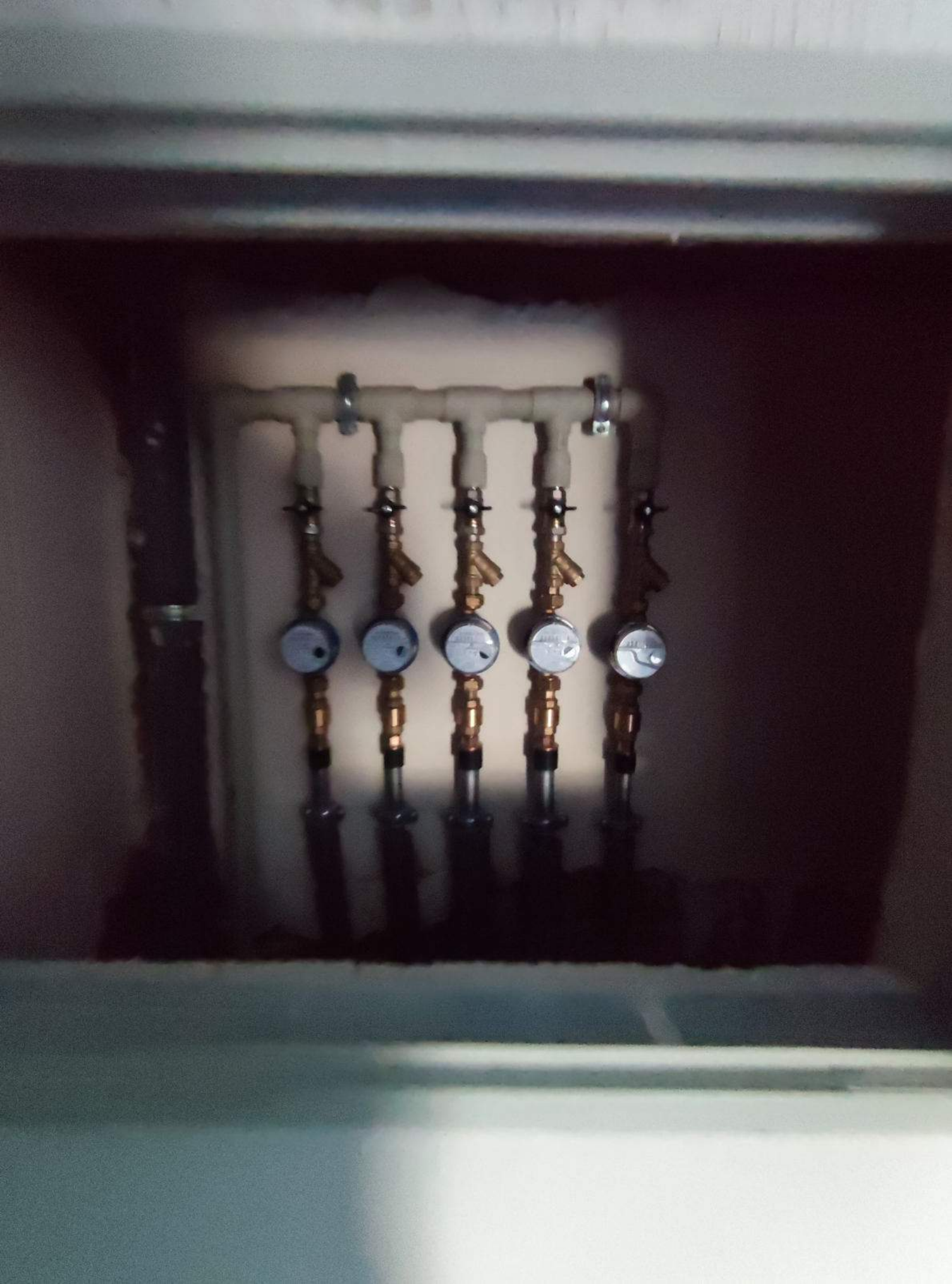


3 ПОВЕРХ

3 ПОВЕРХ











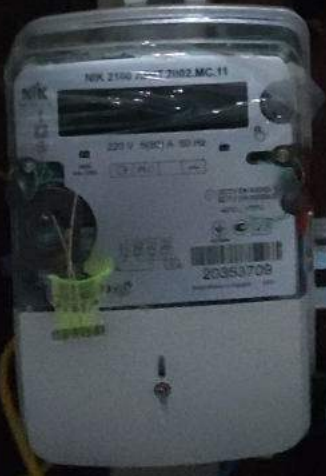
















A white, rectangular tankless water heater is mounted on a wall. It features a control panel at the bottom with two circular knobs and a small display. The unit is surrounded by a large, dark, irregularly shaped patch of drywall or plaster.

A white electrical outlet is mounted on the wall to the left of the water heater. It has a white cover plate and a white cord plugged into it.

A white electrical outlet is mounted on the wall to the left of the water heater, partially obscured by a circular patch of drywall.

A white electrical outlet is mounted on the wall to the left of the water heater, partially obscured by a circular patch of drywall.

A white electrical outlet is mounted on the wall to the right of the water heater, partially obscured by a circular patch of drywall.

A white electrical outlet is mounted on the wall to the right of the water heater, partially obscured by a circular patch of drywall.

A white PVC pipe runs vertically on the left side of the wall, then turns horizontally to the right, passing behind the water heater. It is secured with a metal clamp.

A black flexible pipe is visible at the bottom of the image, extending from the left side towards the center.

A dark, irregularly shaped patch of drywall or plaster is located above the water heater, surrounding a small opening in the wall.

A dark, rectangular patch of drywall or plaster is located on the right side of the wall, above the water heater.













€ |



