













1
DOSEN













FOR SERVICE INFORMATION:
Expansion tank must be installed in accordance with manufacturer's instructions.
Expansion tank must be installed in a location where it will not be damaged by freezing temperatures.
Expansion tank must be installed in a location where it will not be damaged by fire.

17
30







Виробник
«МК Стронг»

ДСТУ Б В.2.6 77:2009



Двері протипожежні
металеві
Одношільні суцільні
EI 60

Сер. №	173
Дата виг.	2024 р.
№ партії	
Маса нетто	70

(096)000-10-11
(099)700-09-10
www.delta.kharkov.ua



ДІПРОВСЬКА БРАМА
ЖИТЛОВИЙ КОМПЛЕКС

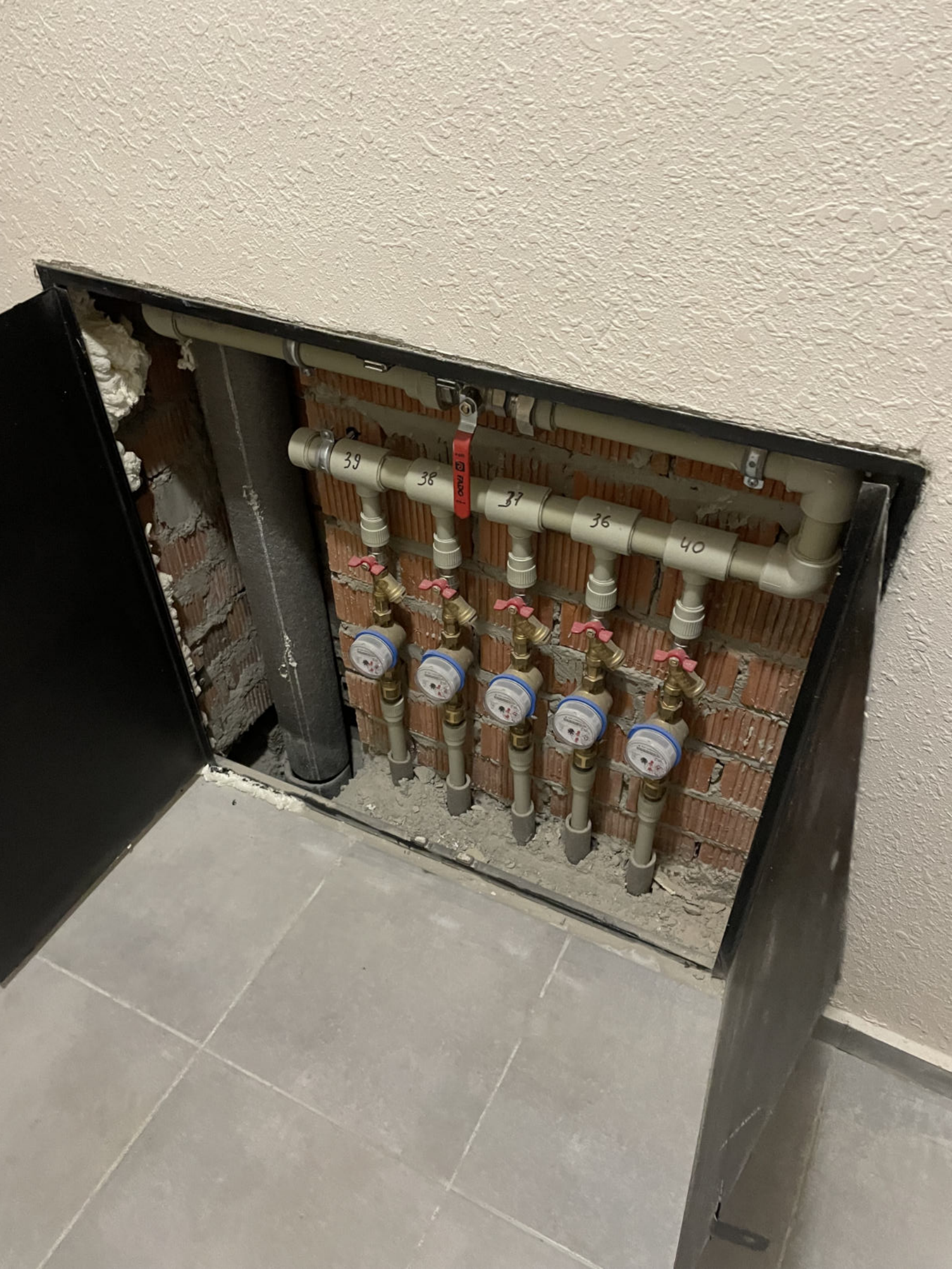
5

ПОВЕРХ

















SANTAN ON

3300894
3300893
4200107-190
021
ONLINE M8 / 12/19/2021

Pietro Fiorentini S.p.A. RGC G4
V.1.20m³ Qmax 0.816m³/h Qd 0.40m³/h
M22 S/N 8200130 / 2272
0 0 0 0 0 0 1 3 m³
1 imp. 0.81 m³

















2
ПОВЕРХ

















































СКМ
ЕЛЕКТРО ТОВ «СКМ Електро»
з усіх питань звертатися:
тел: +380963881278
Сайт: <http://skmelectro.com>
ел. пошта:
з загальних питань: info@skmelectro.com
з технічних питань: teh@skmelectro.com
відділ продажу: sales@skmelectro.com
ТУ У 27.1-43703751-001:2021





























178

177

176

180

OFF
FADO
ON

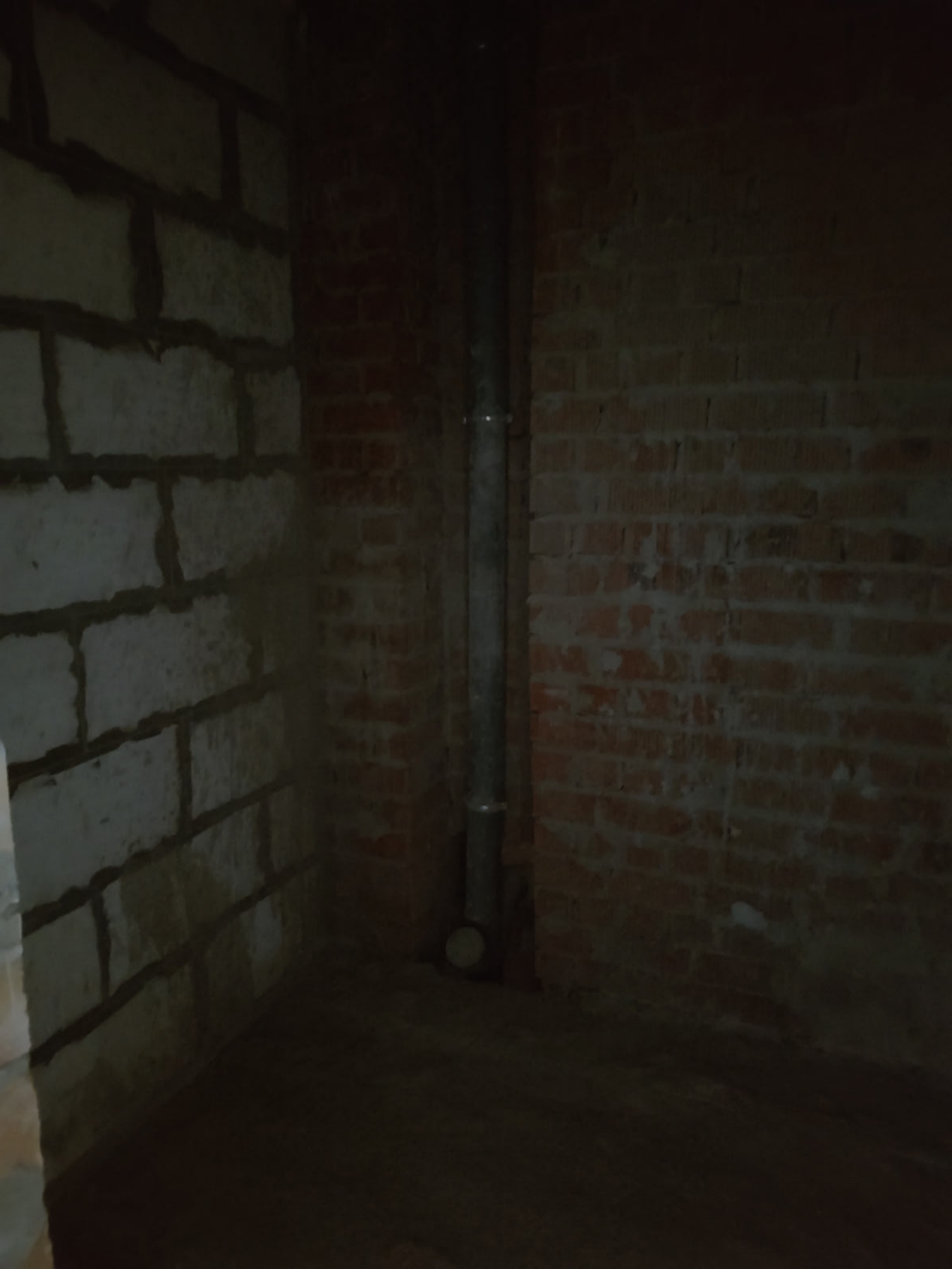






















A white, rectangular wall-mounted water heater with a control panel at the bottom. The control panel includes a digital display and several buttons. A white PVC vent pipe is connected to the top of the unit and extends through a brick wall to the right.

A network of red copper pipes. A main horizontal pipe runs across the top of the wall. A vertical pipe descends from the left side, connecting to a control box. Another horizontal pipe runs below the main one, with a vertical branch extending downwards. The pipes are secured to the wall with metal brackets.

A white electrical control box mounted on the wall. It has a power cord plugged into a wall outlet. The box is connected to the red copper piping system.

A small white remote control device with a power cord, hanging from the wall. It is likely used to operate the water heater's control panel.

A wall made of red bricks with visible mortar joints. The brickwork is somewhat uneven, with some areas of missing mortar or crumbling bricks. The wall is located on the right side of the room.

A plain, light-colored concrete wall with some minor texture and imperfections. It is located on the left side of the room and serves as the mounting surface for the water heater and pipes.



FADO

139

138

137

136

140









A white, rectangular wall-mounted boiler. It features a control panel at the bottom with a digital display and several buttons. A white vent pipe is connected to the top of the boiler and extends to the right. The boiler is mounted on a light-colored, textured wall.

A network of red pipes. A horizontal pipe runs across the top of the boiler. A vertical pipe runs down from the top pipe to the boiler. Another horizontal pipe runs across the bottom of the boiler. A vertical pipe runs down from the bottom pipe to the floor. There are several valves and fittings visible on the pipes.

A white electrical control box mounted on the wall to the left of the boiler. It has a digital display and several buttons. A power cord is plugged into the back of the box. There are also some wires and a small white box connected to the control box.

A brick wall on the right side of the room. The bricks are red and arranged in a standard brick pattern. The mortar is grey. The wall appears to be made of hollow bricks. There is a metal rail or support structure on the right side of the wall.

































